

Howard Morley
& Sons

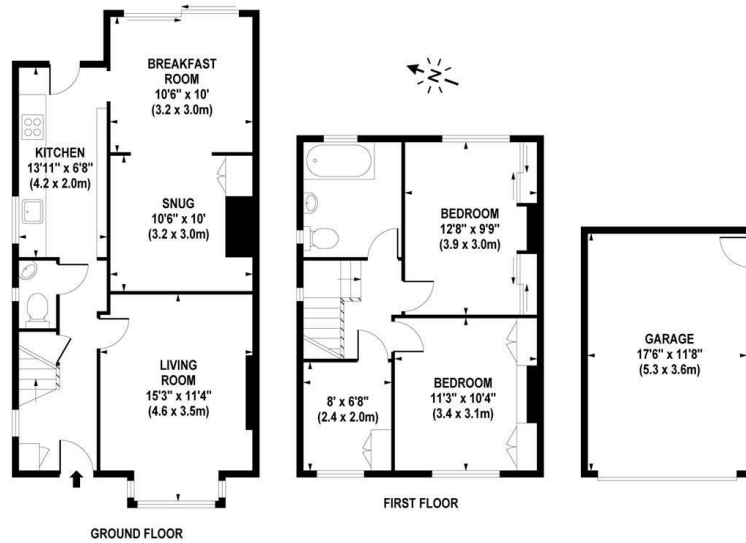


PER MONTH

£2,200 Per Month

Whitemore Road

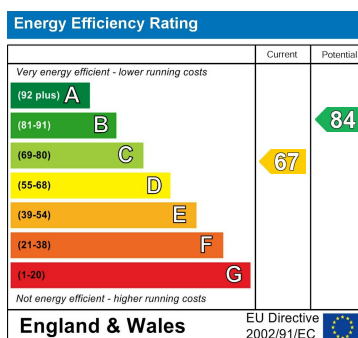
Guildford, GU1 1QU



APPROX. GROSS INTERNAL FLOOR AREA 985 SQ FT / 92 SQ M (MAIN HOUSE)
 APPROX. GROSS INTERNAL FLOOR AREA 206 SQ FT / 19 SQ M (GARAGE)

Whilst every attempt has been made to ensure the accuracy of the floorplan contained here, measurements of doors, windows and rooms are approximate and no responsibility is taken for any error omission or mis-statement. These plans are for representation purposes only and should be used as such by any prospective purchaser / tenant. The services, systems and appliances listed in this specification have not been tested and no guarantee as to their operating ability or their efficiency can be given.

© www.skyshotglobal.com



Agents Note: Whilst every care has been taken to prepare these particulars, they are for guidance purposes only. All measurements are approximate and are for general guidance purposes only and whilst every care has been taken to ensure their accuracy, they should not be relied upon and potential buyers/tenants are advised to recheck the measurements

Howard Morley & Sons

OFFICE ADDRESS
 276 High Street
 Guildford
 Surrey
 GU1 3JL

OFFICE DETAILS
 01483 575 304
 lettings@hmorley.co.uk
 hmorley.co.uk