

Howard Morley
& Sons



PCM

£3,000 PCM

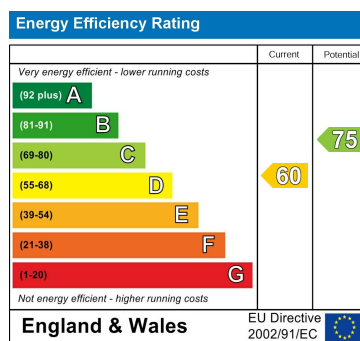
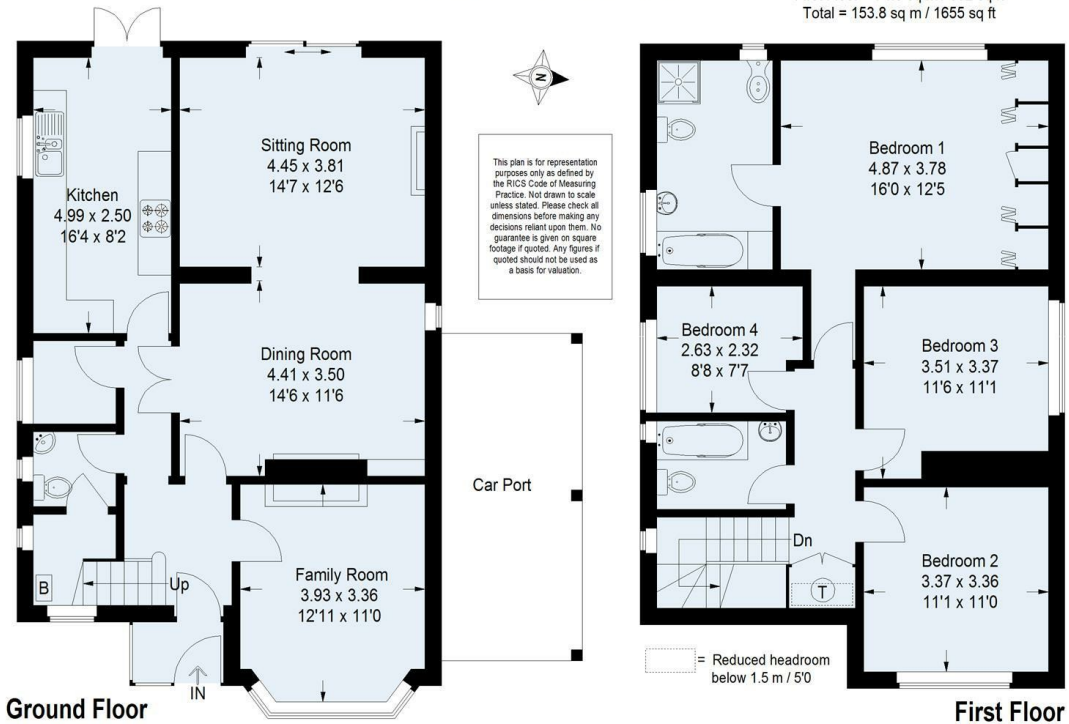
Stonebridge Fields

Shalford, GU4 8EE



Stonebridge Fields, Shalford

Approximate Gross Internal Area
 Ground Floor = 79.3 sq m / 853 sq ft
 First Floor = 74.5 sq m / 802 sq ft
 Total = 153.8 sq m / 1655 sq ft



Agents Note: Whilst every care has been taken to prepare these particulars, they are for guidance purposes only. All measurements are approximate and are for general guidance purposes only and whilst every care has been taken to ensure their accuracy, they should not be relied upon and potential buyers/tenants are advised to recheck the measurements

Howard Morley
& Sons

OFFICE ADDRESS
 276 High Street
 Guildford
 Surrey
 GU1 3JL

OFFICE DETAILS
 01483 575 304
 lettings@hmorley.co.uk
 hmorley.co.uk