



Howard Morley  
& Sons

PER MONTH

**£6,000 Per Month**

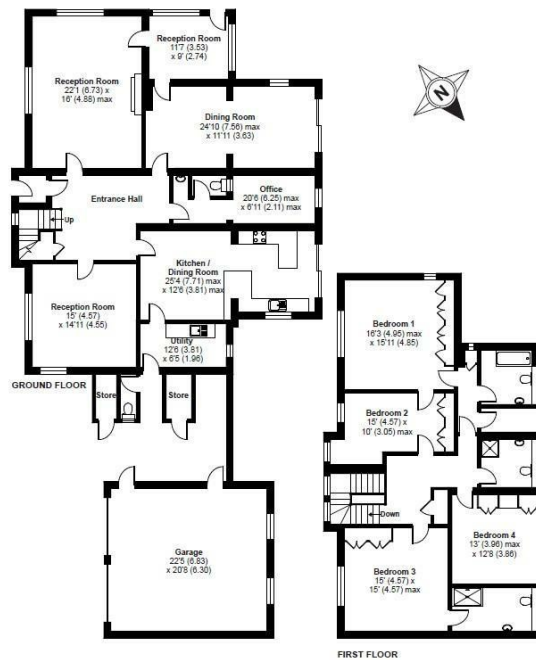
**The Drive**

Guildford, GU5 0QW



### Wonersh, Shamley Green, Guildford, GU5

APPROX. GROSS INTERNAL FLOOR AREA 3654 SQ FT 339.4 SQ METRES (INCLUDES GARAGE & EXCLUDES STORES)

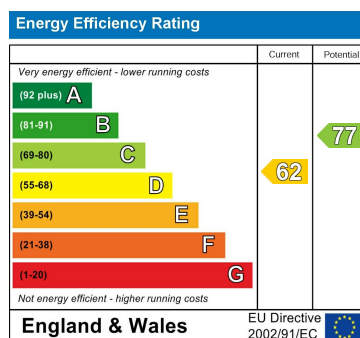


Whilst every attempt has been made to ensure the accuracy of the floor plan contained here, measurements of doors, windows and rooms are approximate and no responsibility is taken for any error, omission or misstatement. These plans are for representation purposes only as defined by RICS Code of Measuring Practice and should be used as such by any prospective purchaser. Specifically no guarantee is given on the total square footage of the property if quoted on this plan. Any figure given is for initial guidance only and should not be relied on as a basis of valuation.  
Copyright nichoem.co.uk 2016. Produced for Crowes Estate. REF: 115775

4 | 

3 | 

4 | 



Agents Note: Whilst every care has been taken to prepare these particulars, they are for guidance purposes only. All measurements are approximate and are for general guidance purposes only and whilst every care has been taken to ensure their accuracy, they should not be relied upon and potential buyers/tenants are advised to recheck the measurements

Howard Morley & Sons

**OFFICE ADDRESS**  
276 High Street  
Guildford  
Surrey  
GU1 3JL

**OFFICE DETAILS**  
01483 575 304  
lettings@hmorley.co.uk  
hmorley.co.uk