

Howard Morley  
& Sons



PCM

**£2,500 PCM**

**Peper Harow House**

Peper Harow, GU8 6BG





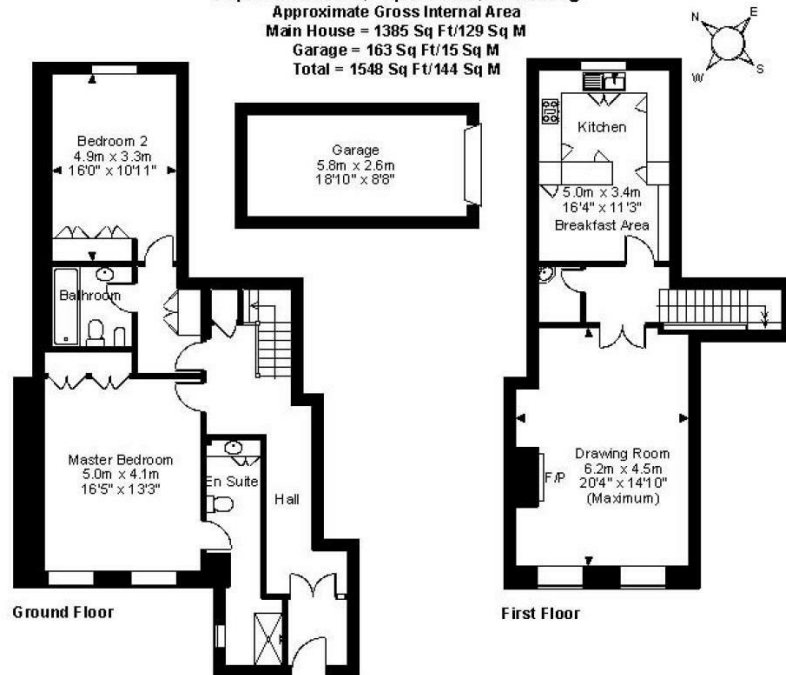
**Peper Harow Park, Peper Harow, Godalming**

Approximate Gross Internal Area

Main House = 1385 Sq Ft/129 Sq M

Garage = 163 Sq Ft/15 Sq M

Total = 1548 Sq Ft/144 Sq M

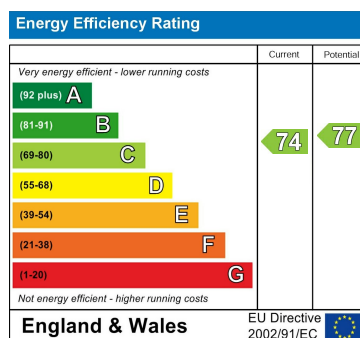


**FOR ILLUSTRATIVE PURPOSES ONLY - NOT TO SCALE**

The position & size of doors, windows, appliances and other features are approximate only.

©ehouse. Unauthorised reproduction prohibited. Drawing ref. dig.8114539WFF

2	
2	
1	



Agents Note: Whilst every care has been taken to prepare these particulars, they are for guidance purposes only. All measurements are approximate and are for general guidance purposes only and whilst every care has been taken to ensure their accuracy, they should not be relied upon and potential buyers/tenants are advised to recheck the measurements

**Howard Morley & Sons**

**OFFICE ADDRESS**  
276 High Street  
Guildford  
Surrey  
GU1 3JL

**OFFICE DETAILS**  
01483 575 304  
lettings@hmorley.co.uk  
hmorley.co.uk