



# QUILLIAM

Numa Court  
Brentford

- Reception Room
- Kitchen
- Marina Views
- Bathroom
- Available May 2021
- Two Double Bedrooms
- Balcony
- Generous Storage
- Convenient Location
- Unfurnished

**£1,400 PCM**

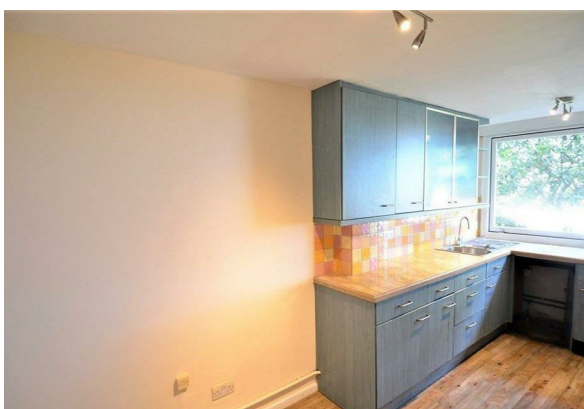






## Property Description

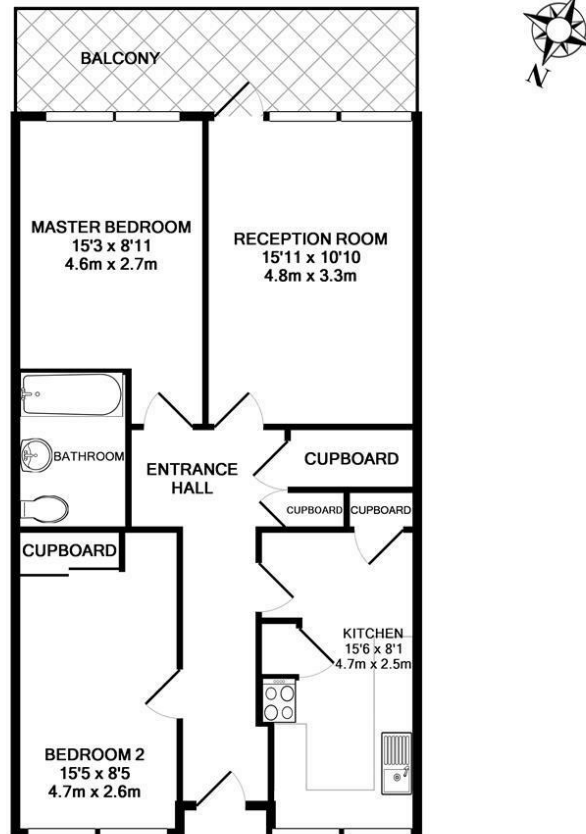
Brentford Dock: Well located on the upper ground floor of Numa Court, this spacious two double bedroom flat has lovely views of the marina. Further benefits include generous internal storage, a short walk from the shop at Brentford Dock and the High Street. Communal waterside communal grounds with picnic area. Available May 2021. Unfurnished.











NUMA COURT  
TOTAL APPROX. FLOOR AREA 746 SQ.FT. (69.3 SQ.M.)

Whilst every attempt has been made to ensure the accuracy of the floor plan contained here, measurements of doors, windows, rooms and any other items are approximate and no responsibility is taken for any error, omission, or mis-statement. This plan is for illustrative purposes only and should be used as such by any prospective purchaser. The services, systems and appliances shown have not been tested and no guarantee as to their operability or efficiency can be given

Made with Metropix ©2017



Energy Efficiency Rating		
	Current	Potential
Very energy efficient - lower running costs		
(92 plus) A		
(81-91) B		
(69-80) C		
(55-68) D		
(39-54) E		
(21-38) F		
(1-20) G		
Not energy efficient - higher running costs		
England & Wales	66	72
EU Directive 2002/91/EC		

Environmental Impact (CO <sub>2</sub> ) Rating		
	Current	Potential
Very environmentally friendly - lower CO <sub>2</sub> emissions		
(92 plus) A		
(81-91) B		
(69-80) C		
(55-68) D		
(39-54) E		
(21-38) F		
(1-20) G		
Not environmentally friendly - higher CO <sub>2</sub> emissions		
England & Wales	62	69
EU Directive 2002/91/EC		

# QUILLIAM

206 High Street  
Brentford  
Middlesex  
TW8 8AH

020 8847 4737  
info@quilliam.co.uk  
www.quilliam.co.uk

Agents Note: Whilst every care has been taken to prepare these particulars, they are for guidance purposes only. All measurements are approximate and are for general guidance purposes only and whilst every care has been taken to ensure their accuracy, they should not be relied upon and potential buyers/tenants are advised to recheck the measurements