



QUILLIAM

Brook Road South
Brentford

- End of Terrace Victorian House
- Two Double Bedrooms
- Large Through Room
- Freehold
- Council Tax Band - D
- No Onward Chain
- Extension Potential (STPP)
- Off Street Parking
- Circa 10 min walk to High Street
- Circa 10 min walk to Brentford Station

£540,000





Property Description

Welcome to this charming end of terrace two bedroom house, tucked neatly in a location that boasts two car parking spaces to the side. For sale and in need of a loving touch, this property is a fantastic opportunity for investors looking to breathe new life into a space.

The house comprises of entrance hall, through reception room and kitchen. On the first floor is a landing, two spacious bedrooms and a bathroom. The reception room has large sash windows to the front that lets in an abundance of natural light and view of the garden to the rear. It's a perfect space to entertain guests or to unwind after a long day.

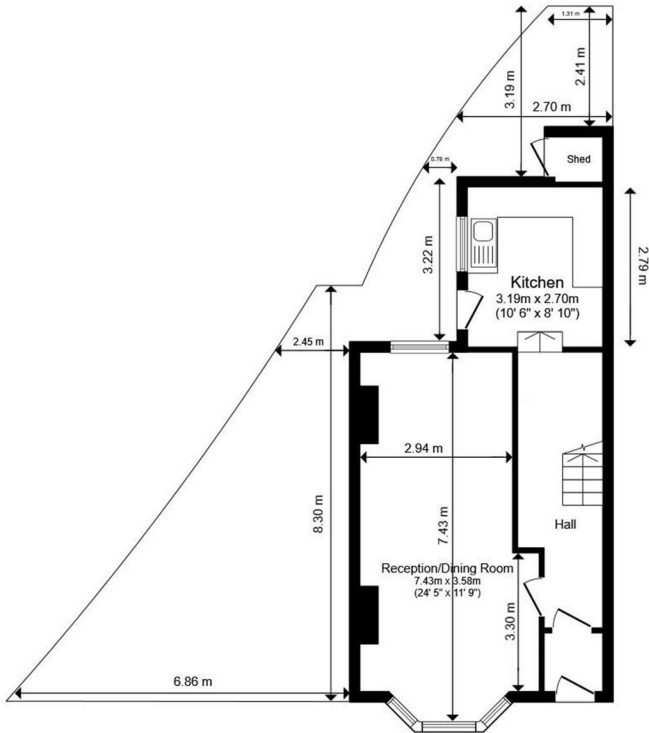
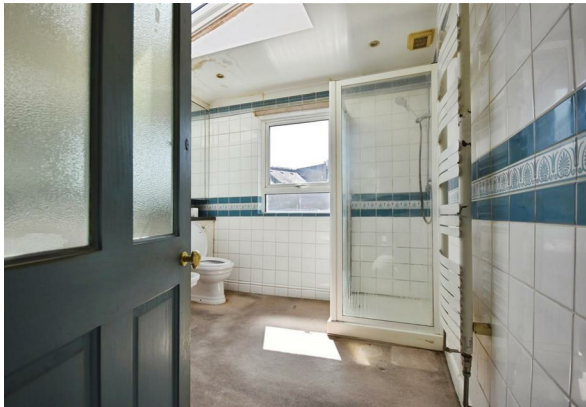
The kitchen is eager for someone with a keen eye for design to revamp it into a culinary haven. While the house needs renovation, it's a blank canvas waiting to be transformed. Imagine being able to put your personal touch on each room, creating a home that truly reflects your style and personality.

With a council tax band D, this house is an affordable property that can be a fantastic investment. The location, coupled with the potential of the property itself, makes it a promising prospect.

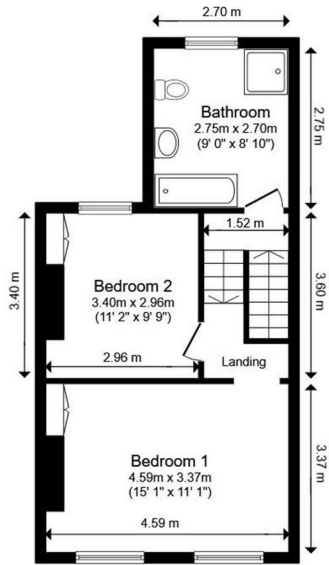
Whether you're an investor looking to expand your portfolio, or someone with a vision to create their dream home, this end of terrace house is a unique opportunity. It's not just a property, it's a chance to craft a space into a beautiful home. Don't miss out on this exciting opportunity!



- Entrance Hall
- Reception / Dining Room
24'4" x 11'8"
- Kitchen
10'5" x 8'10"
- Shed
2'9" x 3'0"
- Bedroom One
15'0" x 11'0"
- Bedroom Two
11'1" x 9'8"
- Bathroom
9'0" x 8'10"
- Garden
- Driveway



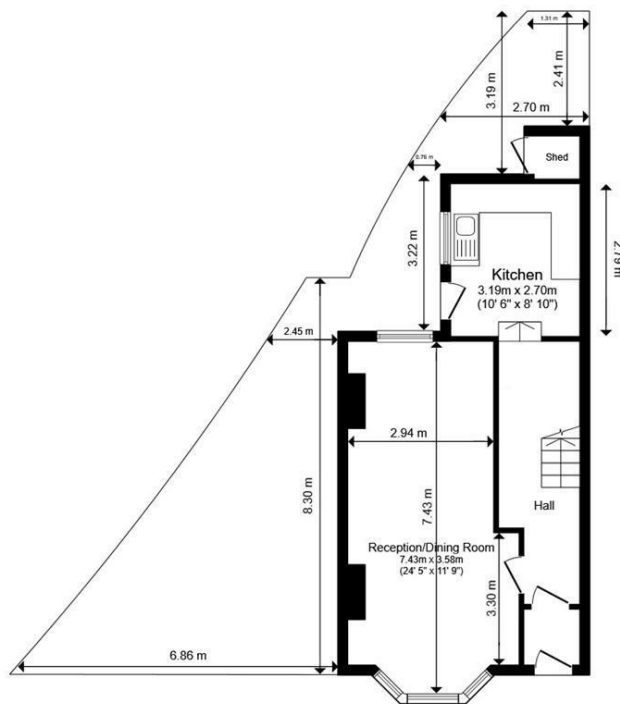
Ground Floor
Floor area 43.8 sq.m. (471 sq.ft.)



First Floor
Floor area 41.7 sq.m. (449 sq.ft.)

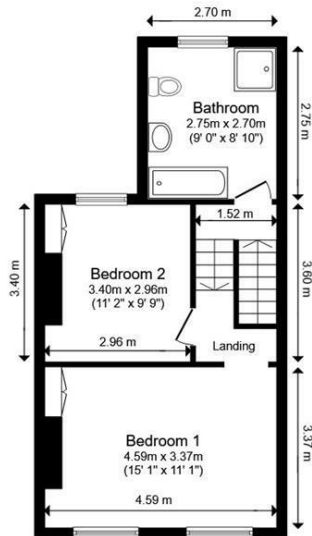
Total floor area: 85.5 sq.m. (920 sq.ft.)

This floor plan is for illustrative purposes only. It is not drawn to scale. Any measurements, floor areas (including any total floor area), openings and orientations are approximate. No details are guaranteed, they cannot be relied upon for any purpose and do not form any part of any agreement. No liability is taken for any error, omission or misstatement. A party must rely upon its own inspection(s). Powered by www.Propertybox.io



Ground Floor

Floor area 43.8 sq.m. (471 sq.ft.)



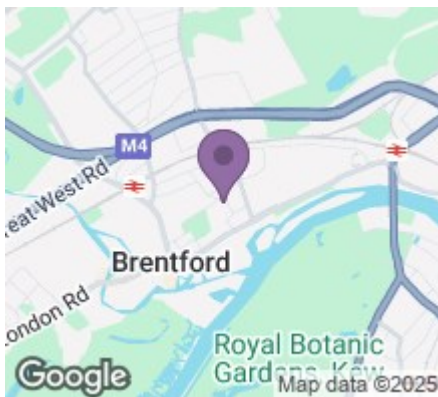
First Floor

Floor area 41.7 sq.m. (449 sq.ft.)

Total floor area: 85.5 sq.m. (920 sq.ft.)

This floor plan is for illustrative purposes only. It is not drawn to scale. Any measurements, floor areas (including any total floor area), openings and orientations are approximate. No details are guaranteed, they cannot be relied upon for any purpose and do not form any part of any agreement. No liability is taken for any error, omission or misstatement. A party must rely upon its own inspection(s). Powered by www.Propertybox.io

Property Information



Energy Efficiency Rating		
	Current	Potential
Very energy efficient - lower running costs		
(92 plus) A		88
(81-91) B		
(69-80) C		
(55-68) D	68	
(39-54) E		
(21-38) F		
(1-20) G		
Not energy efficient - higher running costs		
England & Wales		EU Directive 2002/91/EC

206 High Street
Brentford
TW8 8AH

020 8847 4737
info@quilliam.co.uk
<https://www.quilliam.co.uk>

Agents Note: Whilst every care has been taken to prepare these particulars, they are for guidance purposes only. All measurements are approximate and are for general guidance purposes only and whilst every care has been taken to ensure their accuracy, they should not be relied upon and potential buyers/tenants are advised to recheck the measurements