

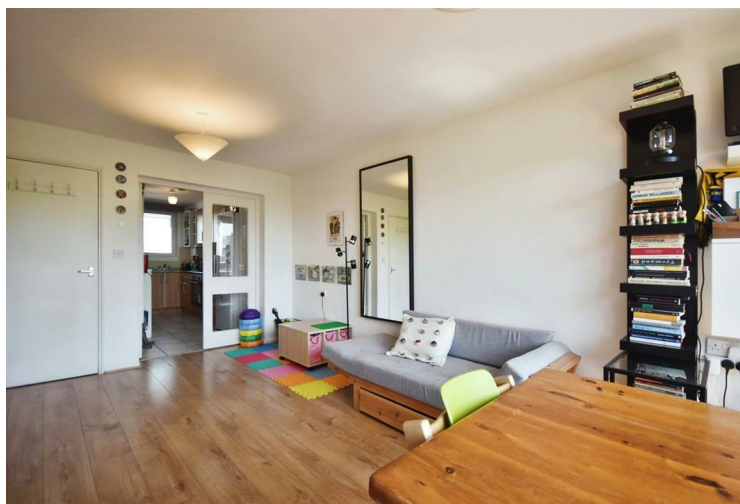


QUILLIAM

Nero Court
Brentford

- Brentford Dock
- Entrance Hall
- Reception Room
- Double Bedroom
- Modern Kitchen
- Tiled Bathroom
- Hot Water and Heating Included
- Water Views
- Unfurnished
- Available Now

£1,600 Per Month





Property Description

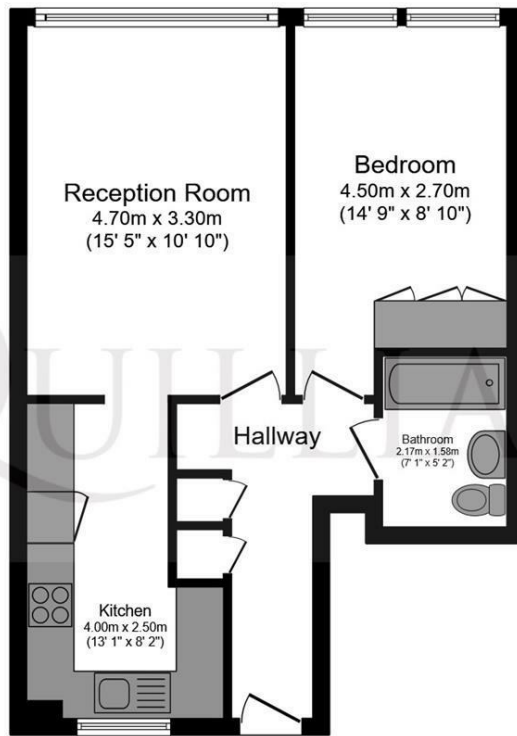
This one double bedroom well presented flat benefits from lovely water views of the Marina in Brentford Dock towards Kew Gardens. The flat has lift access and is close to Brentford Dock Shop. The rent includes hot water and central heating.

Notably, the rent encompasses heating and hot water expenses, providing an exceptional value proposition for prospective tenants, making this offer truly exceptional.

Brentford Dock offers a perfect blend of convenience and tranquillity. Enjoy modern amenities, easy access to transport links, and a vibrant community atmosphere.

Brentford Train Station is a short 12 minutes walk. Easy connection with Hammersmith, Richmond, Chiswick. Isleworth Middlesex hospital reachable 18 minutes by bus.





Floor Plan

Floor area 47.3 sq.m. (510 sq.ft.) approx

Total floor area 47.3 sq.m. (510 sq.ft.) approx

This plan is for illustration purposes only and may not be representative of the property. Plan not to scale.

Powered by Focalagent.com



Energy Efficiency Rating		Current	Potential
Very energy efficient - lower running costs			
(92 plus) A			
(81-91) B			
(69-80) C			
(55-68) D			
(39-54) E			
(21-38) F			
(1-20) G			
Not energy efficient - higher running costs			
England & Wales		73	79
EU Directive 2002/91/EC			

Environmental Impact (CO ₂) Rating		Current	Potential
Very environmentally friendly - lower CO ₂ emissions			
(92 plus) A			
(81-91) B			
(69-80) C			
(55-68) D			
(39-54) E			
(21-38) F			
(1-20) G			
Not environmentally friendly - higher CO ₂ emissions			
England & Wales			
EU Directive 2002/91/EC			

QUILLIAM

206 High Street
Brentford

TW8 8AH

020 8847 4737

info@quilliam.co.uk

https://www.quilliam.co.uk

Agents Note: Whilst every care has been taken to prepare these particulars, they are for guidance purposes only. All measurements are approximate and are for general guidance purposes only and whilst every care has been taken to ensure their accuracy, they should not be relied upon and potential buyers/tenants are advised to recheck the measurements