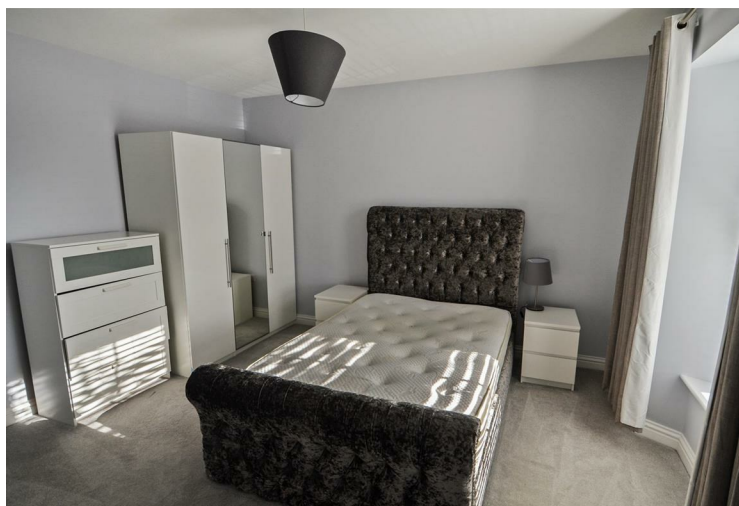


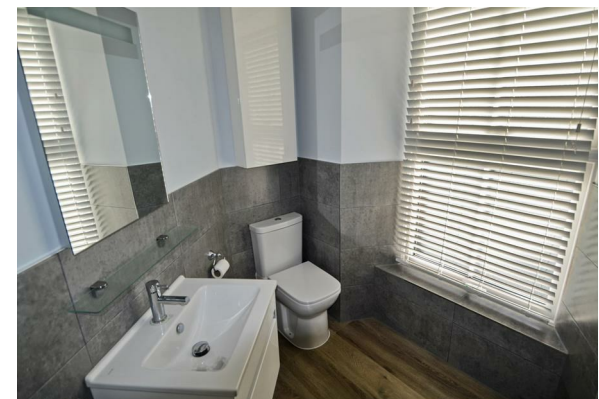
QUILLIAM

9a Boston Manor Road
Brentford

- One Bedroom Flat
- Recently Built - Lovely Condition
- Modern Kitchen and Bathroom
- Kitchen
- Reception Room
- First Floor
- Allocated Parking Space
- Furnished or Unfurnished
- 20/05 Available

£1,600 PCM





Property Description

A recently converted spacious one bedroom flat that is just a short walk from Brentford mainline station. This first floor property benefits from a tiled bathroom, modern kitchen and a spacious reception room and bedroom. Furnished or Unfurnished, this property is available now. 1 X Allocated Parking Space.

Reception Room

9'5 x 13'09

Kitchen

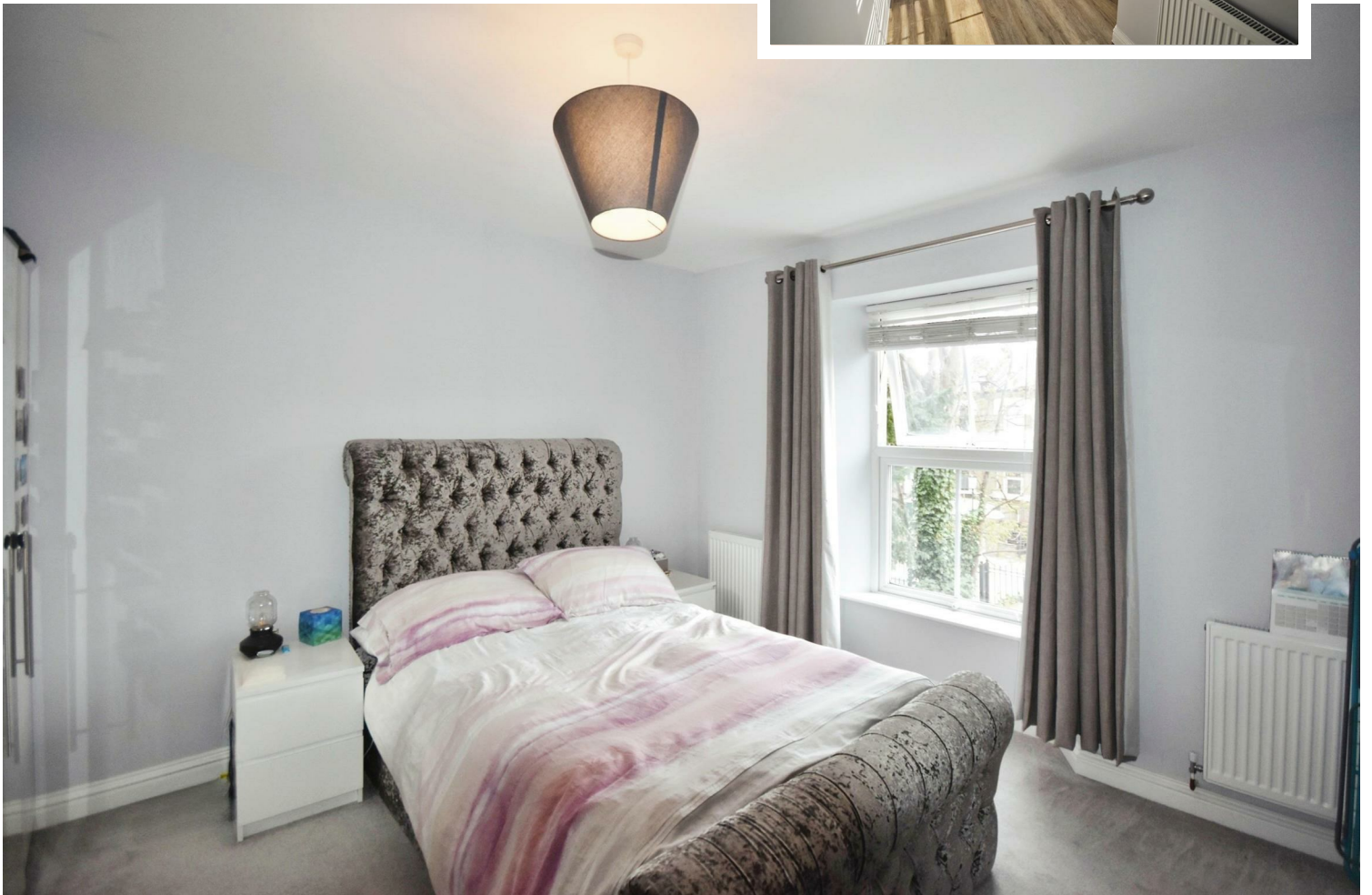
fully fitted

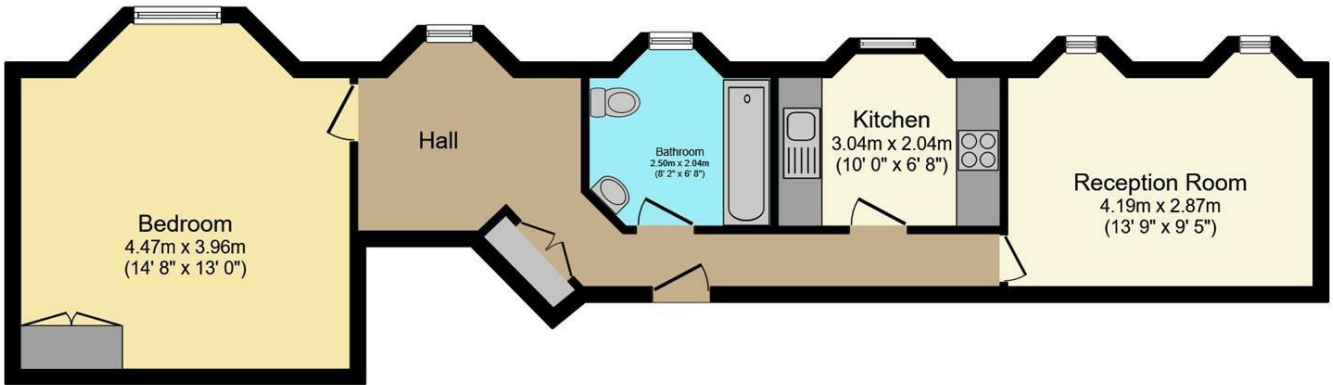
Bathroom

tiled walls, free standing WC and sink. Lovely condition.

Bedroom

14'08 x 13'





Floor Plan

Floor area 58.0 sq. m. (624 sq. ft.) approx

Total floor area 58.0 sq. m. (624 sq. ft.) approx

This Floor Plan is for illustration purposes only and may not be representative of the property. The position and size of doors, windows and other features are approximate. Unauthorized reproduction prohibited. © PropertyBOX



Energy Efficiency Rating		
	Current	Potential
Very energy efficient - lower running costs		
(92 plus) A		
(81-91) B		
(69-80) C		
(55-68) D		
(39-54) E		
(21-38) F		
(1-20) G		
Not energy efficient - higher running costs		
		70
	44	
England & Wales	EU Directive 2002/91/EC	

Environmental Impact (CO ₂) Rating		
	Current	Potential
Very environmentally friendly - lower CO ₂ emissions		
(92 plus) A		
(81-91) B		
(69-80) C		
(55-68) D		
(39-54) E		
(21-38) F		
(1-20) G		
Not environmentally friendly - higher CO ₂ emissions		
England & Wales	EU Directive 2002/91/EC	

QUILLIAM

206 High Street
Brentford

TW8 8AH

020 8847 4737

info@quilliam.co.uk

https://www.quilliam.co.uk

Agents Note: Whilst every care has been taken to prepare these particulars, they are for guidance purposes only. All measurements are approximate and are for general guidance purposes only and whilst every care has been taken to ensure their accuracy, they should not be relied upon and potential buyers/tenants are advised to recheck the measurements