

VIEWS SUSPENDED

Due to high demand for this property, we have made the decision to suspend viewings.

If you have already enquired about this property, we will get back to you in due course.

Thank you for your patience.



73 Victoria Street

Cinderford, GL14 2HD

- END OF TERRACE HOUSE
- FITTED KITCHEN/DINER
- BATHROOM
- GAS HEATING
- WOODLAND VIEWS
- LOUNGE
- TWO BEDROOMS
- DOUBLE GLAZED
- LARGE REAR GARDEN

Dean Estate Agents offer to the rental market; An end of terrace house with accommodation over 3 levels. The fitted kitchen/diner on the lower ground floor with access to the large rear garden, Lounge with gas fire and open views to the rear, two bedrooms with fitted cupboards, white bathroom suite, double glazing and gas heating.

Available from April 2025

£800 PCM

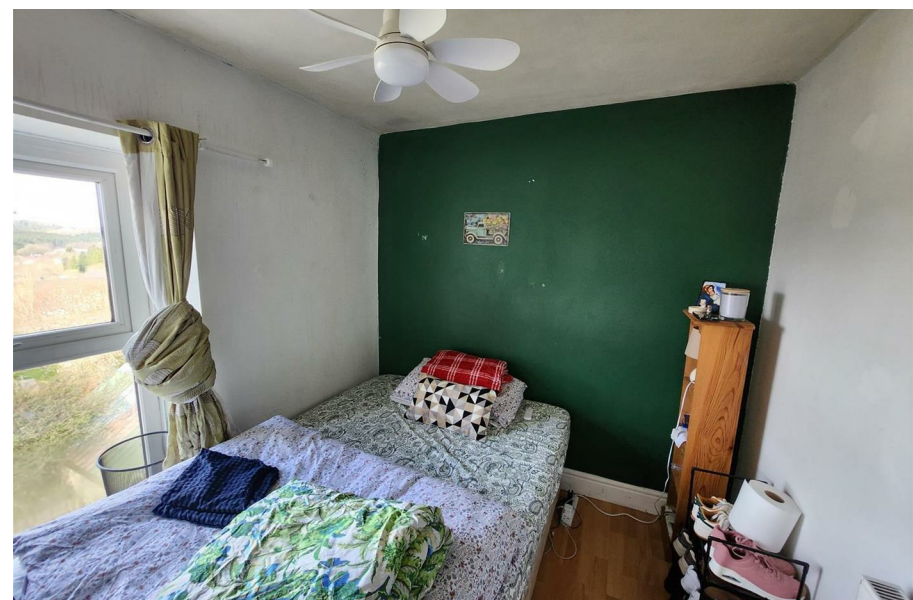


Entrance porch	
Lounge	21'6" x 11'9" (6.55 x 3.58)
Lower ground floor	
Kitchen/Diner	17'8" x 10'4" (5.38 x 3.15)
First Floor Landing	
Bedroom 1	9'9" x 8'9" (2.97 x 2.67)
Bedroom 2	8'8" x 7'3" (2.64 x 2.21)
Bathroom	
Outside	
Deposit and Fee's	
Consumer Notes	
Council Tax	

.

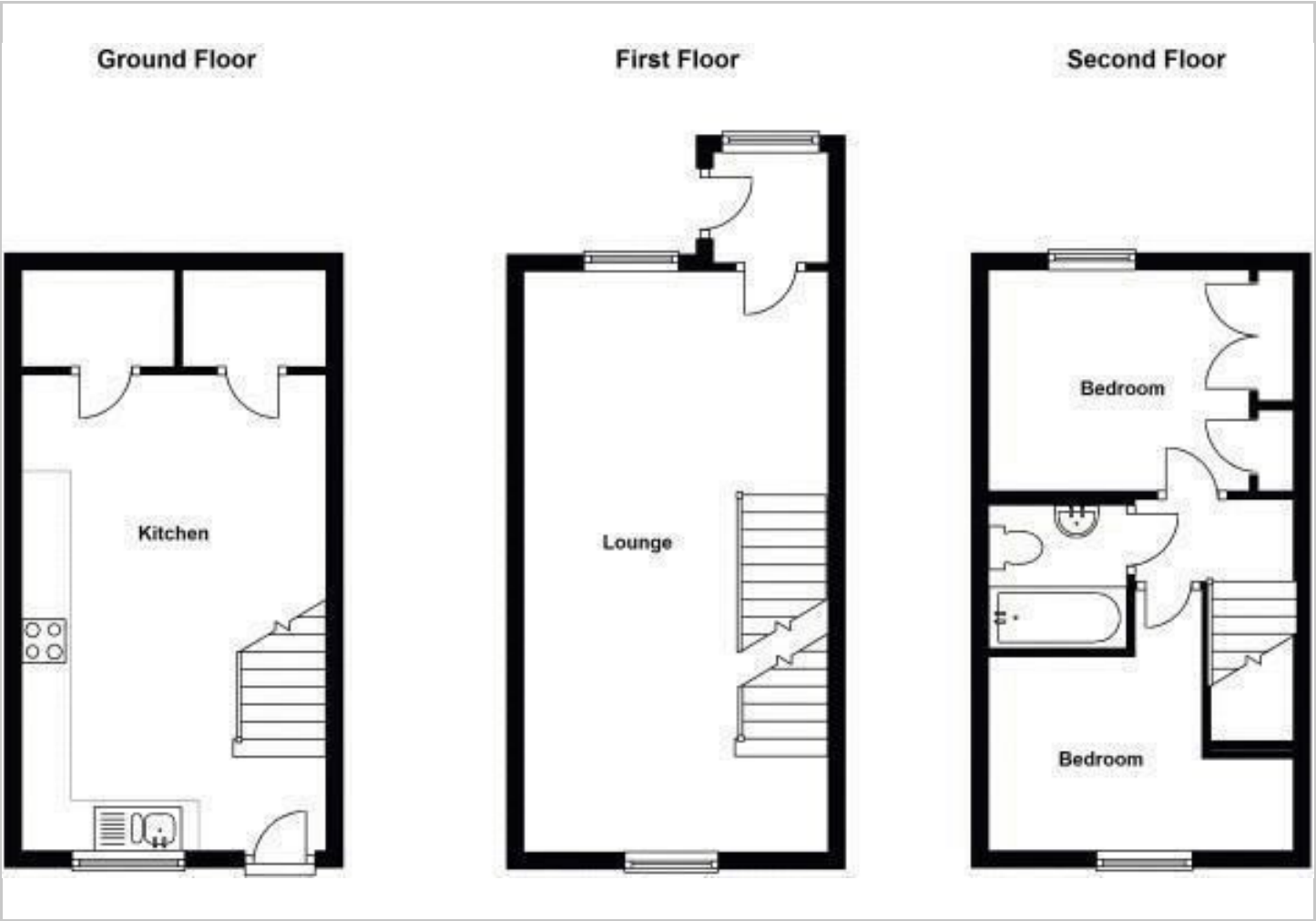


Directions





Floor Plans



Viewing

Please contact our Coleford Office on 01594 835751 if you wish to arrange a viewing appointment for this property or require further information.

The particulars are set out as a general outline only for the guidance of intended purchasers or lessees, and do not constitute, any part of a contract. Nothing in these particulars shall be deemed to be a statement that the property is in good structural condition or otherwise nor that any of the services, appliances, equipment or facilities are in good working order. Purchasers should satisfy themselves of this prior to purchasing.

Location Map



Energy Performance Graph

