



14 Pike Road
Coleford, GL16 8DE

£299,950



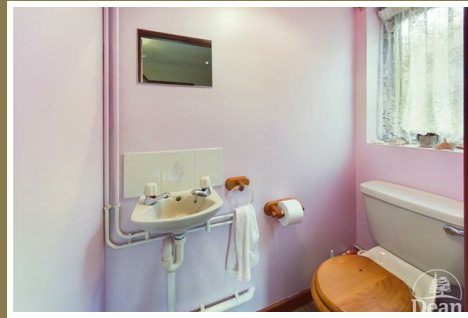
*** VIRTUAL TOUR AVAILABLE *** Dean Estate Agents are pleased to offer this detached bungalow to the market with a sizable garden, located in the sought after town of Coleford.

The property comprises of two sizable bedrooms, a spacious lounge with double patio doors leading to the rear garden, a kitchen/diner, a cloakroom and upstairs bathroom, a large laid to lawn garden, and a garage.

To the front of the property there is parking for multiple vehicles and a gravelled area for low maintenance, secured with a wooden fence and an entrance gate.

To the rear of the property there is a patio area perfect for getting together with friends and family, a sizable lawned section, a gravelled area, and a great space for a greenhouse, as well as the garage and off-road parking to the side of the property.

The bungalow is situated in the lovely town of Coleford, offering many local amenities such as pharmacies, supermarkets, a cinema, a library, and independent shops and cafes.



Entrance Hallway:

16'10" x 2'11" (5.14m x 0.91m)

UPVC double glazed front door, storage cupboard, loft access, double panelled radiator, a smoke alarm, power and lighting, airing cupboard with boiler.

Lounge:

11'3" x 17'7" (3.45m x 5.38m)

Double glazed sliding door to the garden, double glazed window, double panelled radiator, an electric wall mounted fire, TV point, power and lighting.

Kitchen:

11'11" x 8'0" (3.65m x 2.45m)

A range of base, wall and drawer units, stainless steel one and a half bowl sink drainer unit, double oven, four ring gas hob, a dishwasher, a fridge/freezer, an extractor hood, double glazed window, double panelled radiator, power and lighting.

Utility Room:

7'3" x 5'1" (2.21m x 1.57m)

UPVC double glazed door, base and wall units, plumbing for a washing machine, stainless steel sink drainer unit, single panelled radiator, power and lighting.

Bedroom One:

11'10" x 9'4" (3.62m x 2.86m)

Double glazed window to front, double panelled radiator, fitted wardrobes, TV point, power and lighting.

Bedroom Two:

8'2" x 8'11" (2.50m x 2.73m)

Double glazed window, storage cupboard with hanging rail, single panelled radiator, power and lighting.

Cloakroom:

2'9" x 5'2" (0.84m x 1.60m)

W.C, wash hand basin, tiled splashback, extractor fan.

Bathroom:

5'11" x 6'0" (1.82m x 1.83m)

Double glazed window, bath, vanity sink unit, W.C, step in shower, heated towel rail, extractor fan, lighting.

Garage:

21'8" x 8'11" (6.62m x 2.74m)

Up and over door, side door, power and lighting.

Outside:

To the front of the property is parking for multiple vehicles and gravelled area for low maintenance. To the rear of the property there is a patio area, lawned section, gravelled area and space for a greenhouse if desired.



Consumer Notes: Dean Estate Agents Ltd have prepared the information within this website/brochure with care and co-operation from the seller. It is intended to be indicative rather than definitive, without a guarantee of accuracy. Before you act upon any information provided, we request that you satisfy yourself about the completeness, accuracy, reliability, suitability or availability with respect to the website or the information, products, services, or related graphics contained on the website for any purpose. These details do not constitute any part of any Offer, Contract or Tenancy Agreement.

Photographs used for advertising purposes may not necessarily be the most recent photographs, although every effort is made to update photographs at the earliest opportunity. Any reliance you place on such information is therefore strictly at your own risk. All photographic images are under the ownership of Dean Estate Agents Ltd and therefore Dean Estate Agents retain the copyright. You must obtain permission from the owner of the images to reproduce them.

Tenanted Properties – we are not always able to show the most recent condition of a property due to tenants' privacy and we may choose to show the photographs of the property when it was last vacant to at least allow clients some idea of the internal condition. Therefore, we would of course, urge you to view before making any decisions to purchase or rent the property and before any costs.

Energy Performance Certificates are supplied to us via a third party and we do not accept responsibility for the content within such reports.

PRC Certificates – Some ex-local authority properties have been repaired in recent years using the PRC Scheme wherein a certificate has been produced by a qualified property engineer. This certificate does not imply the suitability for a mortgage approval and you must satisfy yourself of the work carried out that may meet your lenders criteria.

As with leasehold property or new build development sites, you are likely to be responsible for a contribution to management charges and/or ground rent or a contribution to the development service charge. Please enquire at the time of viewing.

You may also incur fees for items such as leasehold packs and, in addition, you will also need to check the remaining length of any lease before you complete a mortgage application form. Please ask a member of our team for any help required before committing to purchase a property and incurring expense.

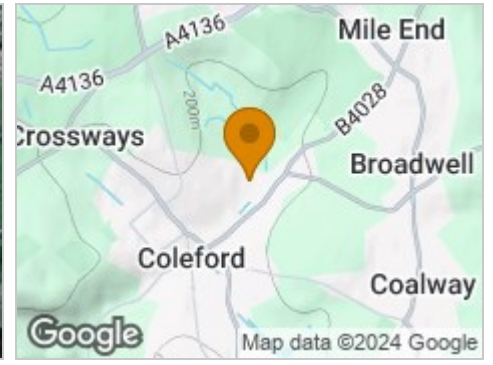
Road Map



Hybrid Map



Terrain Map



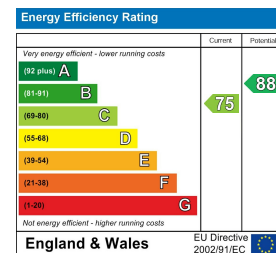
Floor Plan



Viewing

Please contact our Coleford Office on 01594 835751 if you wish to arrange a viewing appointment for this property or require further information.

Energy Efficiency Graph



These particulars, whilst believed to be accurate are set out as a general outline only for guidance and do not constitute any part of an offer or contract. Intending purchasers should not rely on them as statements of representation of fact, but must satisfy themselves by inspection or otherwise as to their accuracy. No person in this firm's employment has the authority to make or give any representation or warranty in respect of the property.