



The Town House Lords Hill, Coleford, GL16 8BD  
£750 Per Month





£750 Per Month

# The Town House Lords Hill

Coleford, GL16 8BD

- TOWN CENTRE LOCATION
- PARKING
- AVAILABLE NOW

DEAN ESTATE AGENTS are delighted to offer for commercial rent, these prime location premises in Coleford for long let. These premises are ideal for those looking for town trading with exposure. Located next to the town parking.

The premises would suit those looking for retail opportunities.

We have the keys for immediate viewing.

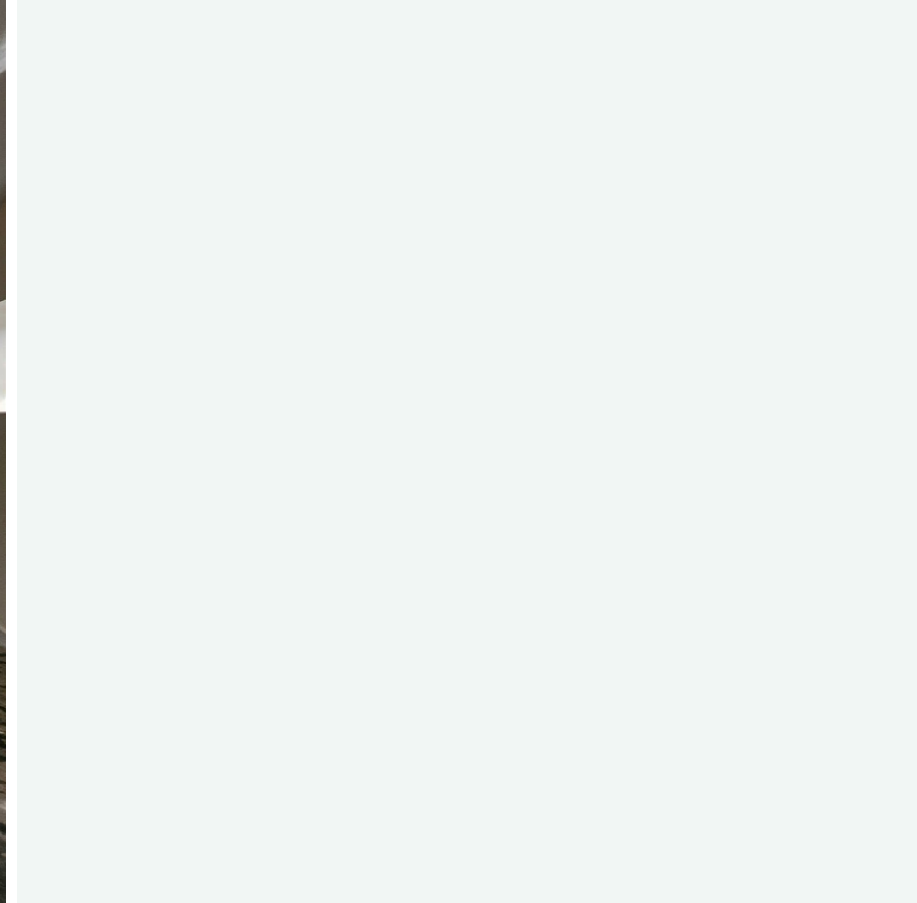
Please call 01594 835751 - option 2 to arrange your viewing.



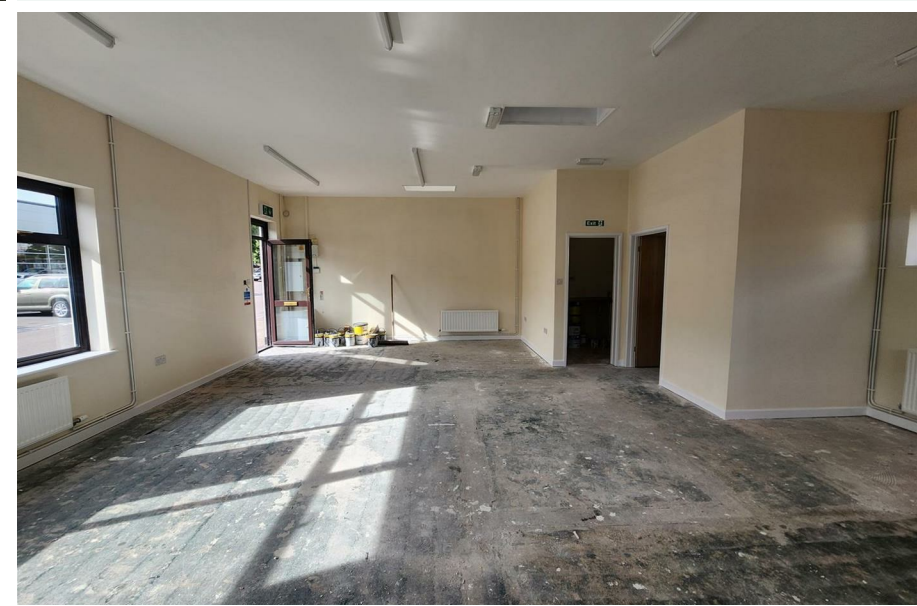
Whole office

27'10" x 24'7" (8.48m x 7.49m)





Directions





## Floor Plans



## Viewing

Please contact our Coleford Office on 01594 835751 if you wish to arrange a viewing appointment for this property or require further information.

The particulars are set out as a general outline only for the guidance of intended purchasers or lessees, and do not constitute, any part of a contract. Nothing in these particulars shall be deemed to be a statement that the property is in good structural condition or otherwise nor that any of the services, appliances, equipment or facilities are in good working order. Purchasers should satisfy themselves of this prior to purchasing.

14 St John Street, Coleford, Gloucestershire, GL16 8AR  
 Tel: 01594 835751 Email: coleford@deanestateagents.co.uk www.deanestateagents.co.uk

## Location Map



## Energy Performance Graph

Energy Efficiency Rating		Current	Potential
<i>Very energy efficient - lower running costs</i>			
(92 plus) <b>A</b>			
(81-91) <b>B</b>			
(69-80) <b>C</b>			
(55-68) <b>D</b>			
(39-54) <b>E</b>			
(21-38) <b>F</b>			
(1-20) <b>G</b>			
<i>Not energy efficient - higher running costs</i>			
<b>England &amp; Wales</b>	EU Directive 2002/91/EC		