



Oak House Stockwell Lane, Lydney, GL15 6ST
£620 Per Month





APEX
ARCHITECTURE

100-101A KEELE ST. www.apexarchitecture.co.uk

MCS

£620 Per Month

Oak House Stockwell Lane

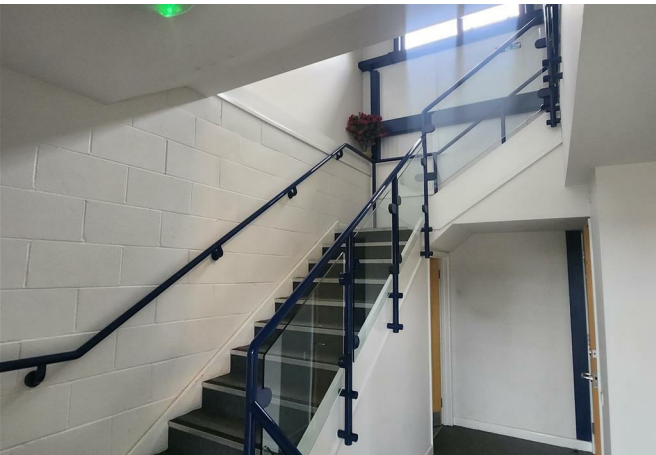
Lydney, GL15 6ST

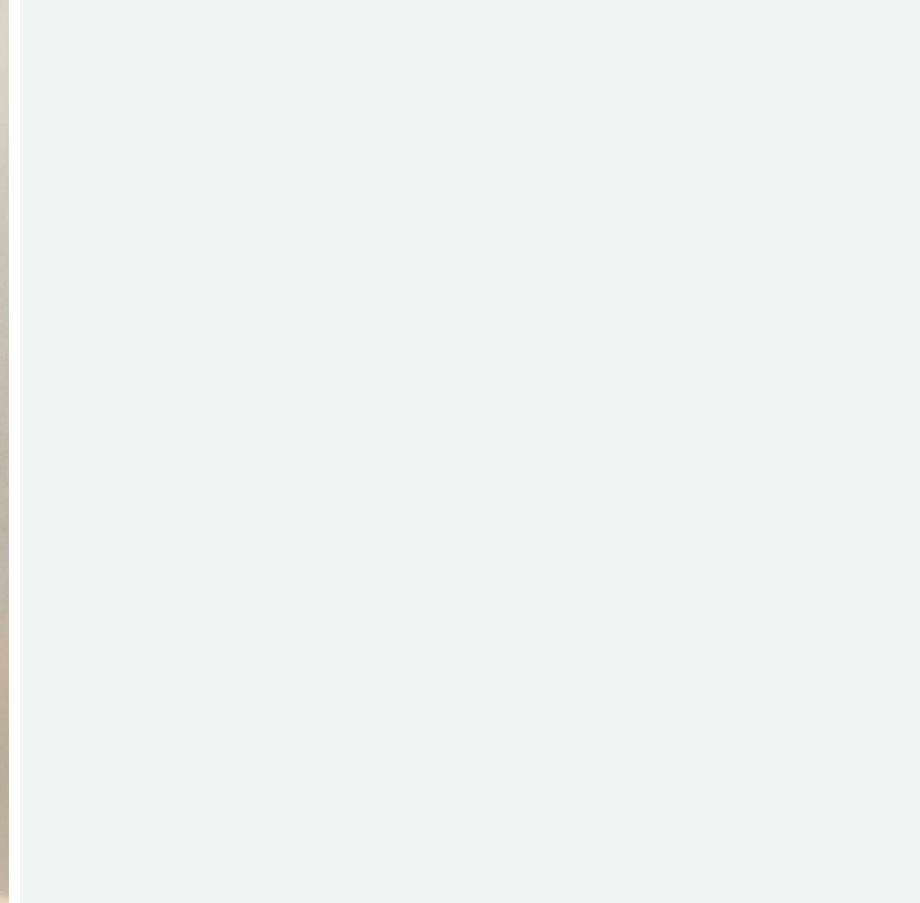
Dean Estate Agents Lettings offer for rent this modern office, proposition located just outside Lydney with easy commuting to Chepstow and Gloucester.

The office is located on a first floor within similar buildings, has 4 car parking spaces, communal areas to include lavatories and is available now.

All utility bills will be the responsibility of the tenant, the communal areas will be covered by the Landlord.

The office suite is also fitted with a twin air con/heating system and the Lease will be a term of 3 years.





Directions

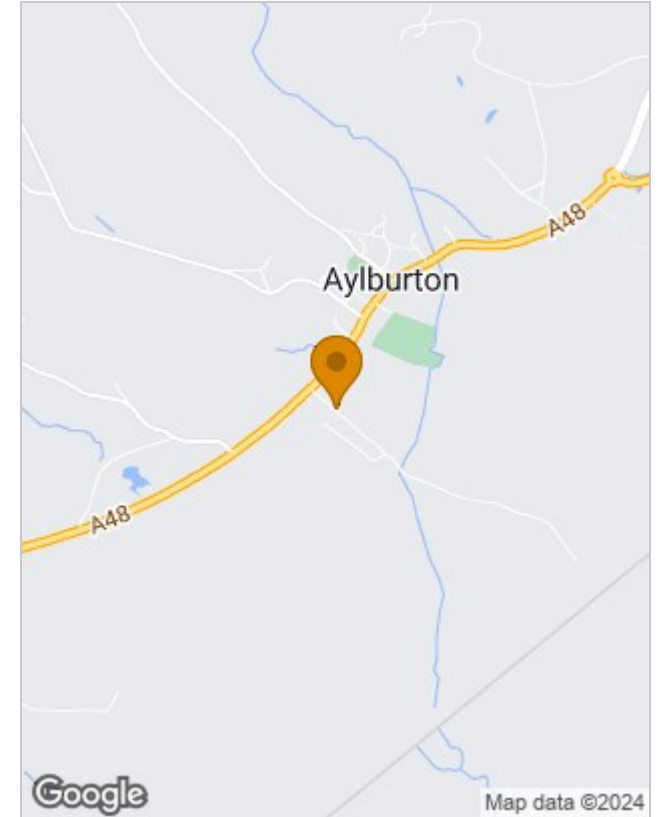




Floor Plans



Location Map



Energy Performance Graph

Energy Efficiency Rating		
	Current	Potential
Very energy efficient - lower running costs		
(92 plus) A		
(81-91) B		
(69-80) C		
(55-68) D		
(39-54) E		
(21-38) F		
(1-20) G		
Not energy efficient - higher running costs		
England & Wales	EU Directive 2002/91/EC	

Viewing

Please contact our Coleford Office on 01594 835751 if you wish to arrange a viewing appointment for this property or require further information.

The particulars are set out as a general outline only for the guidance of intended purchasers or lessees, and do not constitute, any part of a contract. Nothing in these particulars shall be deemed to be a statement that the property is in good structural condition or otherwise nor that any of the services, appliances, equipment or facilities are in good working order. Purchasers should satisfy themselves of this prior to purchasing.