



10 Hatton Close

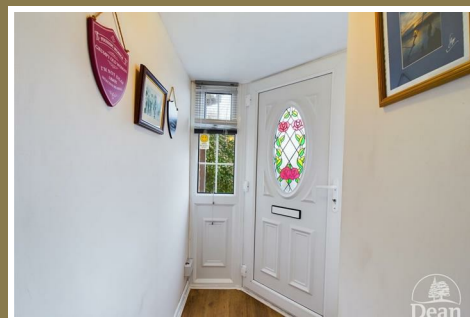
Worrall Hill, Lydbrook, GL17 9QJ

£315,000



VIRTUAL TOUR AVAILABLEVIEWING HIGHLY RECOMMENDED*** Dean Estate Agents are delighted to offer to the market this four bedroom detached dormer bungalow situated in Worrall Hill near Lydbrook in the Forest of Dean. Worrall Hill is a lovely community with a Sports & Social Club, a recreation field and direct access into the woodlands. Nearby Lydbrook has two takeways, two public houses, a convenience shop and a doctors surgery.

The accommodation comprises of spacious entrance hallway leading to bright lounge, large kitchen/diner with separate utility room, a downstairs bathroom and two downstairs double bedrooms which could be used as an extra reception rooms. There are two bedrooms on the first floor. Outside there is off road parking and front and rear gardens with mature shrubs, flowering borders and lawned areas, there is more parking to the rear and access to the woodlands.



Approached via UPVC double glazed door into:

Entrance Porch:

6'0" x 4'0" (1.85m x 1.22m)

Wooden laminate flooring, power and lighting, door to entrance hallway.

Entrance Hallway:

Wood laminate flooring, stairs to the first floor, understairs storage cupboard, airing cupboard, double panelled radiator, power and lighting, doors to lounge, kitchen/diner, bathroom and two bedrooms.

Lounge:

15'1" x 15'5" (4.60m x 4.71m)

Two double glazed windows to the front aspect, feature fireplace with wooden surround and marble hearth housing an electric fire, single panelled radiator.

Kitchen/Diner:

13'9" x 11'7" (4.21m x 3.54m)

A range of wall, drawers and base units, worktop, one and a half stainless steel sink with mixer tap and drainer unit, space for cooker, space for appliances, tiled splashbacks, space for fridge/freezer, space for table and chairs, wood laminate flooring, exposed ceiling beams, double glazed window, door to utility room.

Utility Room:

6'9" x 9'2" (2.06m x 2.81m)

Space and plumbing for appliances, vinyl flooring, two dual aspect double glazed windows, UPVC door opening to the rear garden, radiator.

Bedroom One:

11'8" x 11'5" (3.58m x 3.48m)

Fitted wardrobes, double glazed window to front aspect, single panelled radiator, power and lighting.

Bedroom Two:

9'10" x 11'3" (3.00m x 3.44m)

Double glazed window to rear aspect, double panelled radiator, power and lighting.

Bathroom:

5'4" x 7'10" (1.64m x 2.40m)

Panelled bath with overhead shower attachment, pedestal wash hand basin, low level W.C., tiled walls, tiled flooring, extractor fan, heated towel rail, double glazed obscured window.

First Floor Landing:

3'9" x 3'5" (1.16m x 1.05m)

Doors to two bedrooms, smoke alarm.

Bedroom Three:

11'9" x 15'6" (3.59m x 4.73m)

Double glazed Velux window, double glazed

window, single panelled radiator, eaves storage, power and lighting.

Bedroom Four:

9'1" x 9'5" (2.77m x 2.88m)

Double glazed Velux window, eaves storage, radiator, power and lighting.

Outside:

To the front of the property there is a driveway providing off road parking with steps to the mature front garden which has a patio and a

rockery, there are raised flower borders, mature shrubs and bushes, lawned area with trees and outside lighting. The rear garden benefits from a lawned garden with a paved patio and space for seating. The property is all enclosed by fencing and walling surround.



Consumer Notes: Dean Estate Agents Ltd have prepared the information within this website/brochure with care and co-operation from the seller. It is intended to be indicative rather than definitive, without a guarantee of accuracy. Before you act upon any information provided, we request that you satisfy yourself about the completeness, accuracy, reliability, suitability or availability with respect to the website or the information, products, services, or related graphics contained on the website for any purpose.

These details do not constitute any part of any Offer, Contract or Tenancy Agreement.

Photographs used for advertising purposes may not necessarily be the most recent photographs, although every effort is made to update photographs at the earliest opportunity. Any reliance you place on such information is therefore strictly at your own risk. All photographic images are under the ownership of Dean Estate Agents Ltd and therefore Dean Estate Agents retain the copyright. You must obtain permission from the owner of the images to reproduce them.

Tenanted Properties – we are not always able to show the most recent condition of a property due to tenants' privacy and we may choose to show the photographs of the property when it was last vacant to at least allow clients some idea of the internal condition. Therefore, we would of course, urge you to view before making any decisions to purchase or rent the property and before any costs.

Energy Performance Certificates are supplied to us via a third party and we do not accept responsibility for the content within such reports.

PRC Certificates – Some ex-local authority properties have been repaired in recent years using the PRC Scheme wherein a certificate has been produced by a qualified property engineer. This certificate does not imply the suitability for a mortgage approval and you must satisfy yourself of the work carried out that may meet your lenders criteria.

As with leasehold property or new build development sites, you are likely to be responsible for a contribution to management charges and/or ground rent or a contribution to the development service charge. Please enquire at the time of viewing.

You may also incur fees for items such as leasehold packs and, in addition, you will also need to check the remaining length of any lease before you complete a mortgage application form. Please ask a member of our team for any help required before committing to purchase a property and incurring expense.

Road Map



Hybrid Map



Terrain Map



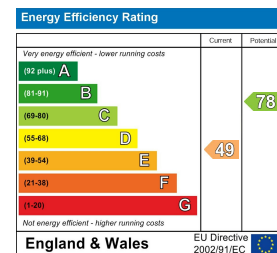
Floor Plan



Viewing

Please contact our Coleford Office on 01594 835751 if you wish to arrange a viewing appointment for this property or require further information.

Energy Efficiency Graph



These particulars, whilst believed to be accurate are set out as a general outline only for guidance and do not constitute any part of an offer or contract. Intending purchasers should not rely on them as statements of representation of fact, but must satisfy themselves by inspection or otherwise as to their accuracy. No person in this firm's employment has the authority to make or give any representation or warranty in respect of the property.