

HUNTERS®

HERE TO GET *you* THERE

90 Leighton Road, Sheffield, S14 1SS

Guide Price £130,000

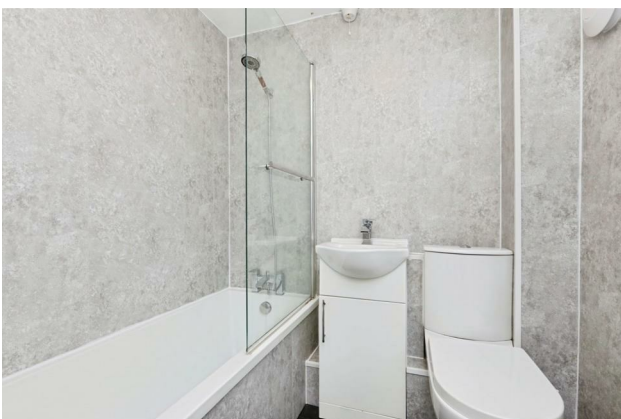
Property Images



HUNTERS®

HERE TO GET *you* THERE

Property Images



HUNTERS[®]

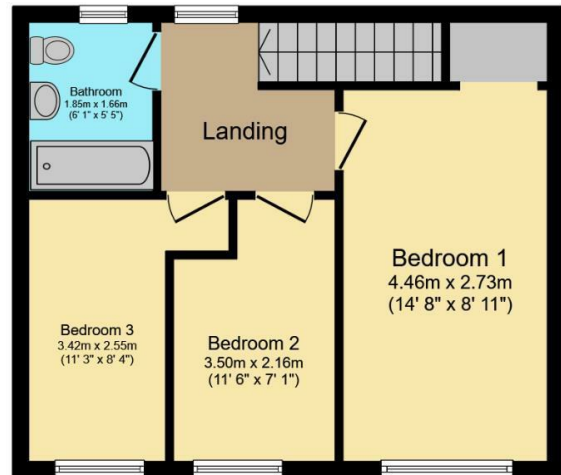
HERE TO GET *you* THERE

Property Images





Ground Floor
Floor area 41.7 sq.m. (448 sq.ft.)

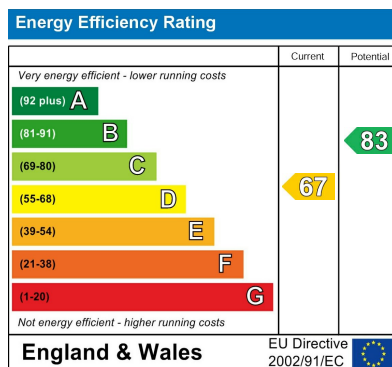


First Floor
Floor area 40.6 sq.m. (436 sq.ft.)

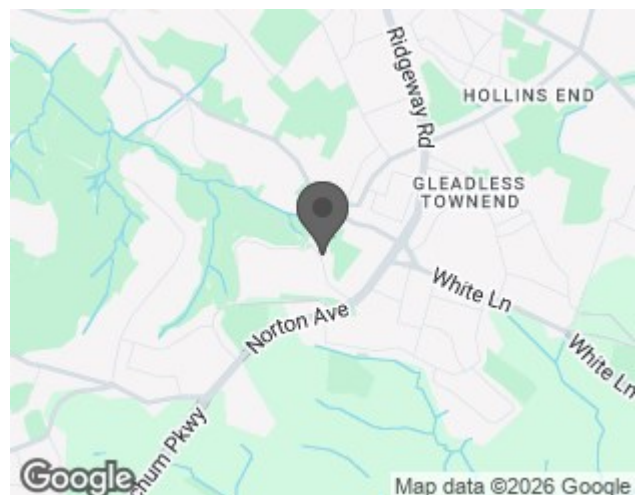
Total floor area: 82.2 sq.m. (885 sq.ft.)

This floor plan is for illustrative purposes only. It is not drawn to scale. Any measurements, floor areas (including any total floor area), openings and orientations are approximate. No details are guaranteed, they cannot be relied upon for any purpose and do not form any part of any agreement. No liability is taken for any error, omission or misstatement. A party must rely upon its own inspection(s). Powered by www.Propertybox.io

EPC



Map



Details

Type: House - Mid Terrace Beds: 3 Bathrooms: 1 Reception: 1 Tenure: Freehold

Summary

GUIDE PRICE £130,000 - £140,000

Nestled on Leighton Road in the vibrant city of Sheffield, this tastefully decorated three-bedroom mid-terrace house offers a perfect blend of modern living and comfort. Upon entering, you are welcomed into a separate utility area, which features built-in storage, providing a practical space for everyday needs. The heart of the home is the contemporary white dining kitchen, equipped with a range of matching wall and base units, ensuring both style and functionality. This delightful kitchen seamlessly flows into the inviting living room, creating an ideal setting for family gatherings and entertaining guests.

As you ascend to the first floor, you will find a well-appointed landing that leads to three bedrooms, each offering a peaceful retreat. The modern white bathroom suite is designed with elegance in mind, providing a refreshing space for relaxation.

Outside, the property boasts an enclosed garden that is perfect for outdoor enjoyment. The garden features a raised area, predominantly laid to lawn, complemented by a decked seating area that is perfect for alfresco dining during the warmer months.

With no onward chain, this charming home is ready for you to move in and make it your own. Whether you are a first-time buyer or looking for a family home, this property on Leighton Road is a wonderful opportunity not to be missed.

Features

- Tastefully decorated three Bedroom • Mid town house • Modern fitted kitchen • Separate utility room • White bathroom • Enclosed garden with lawn and decked seating area • No onward chain • Energy Performance Rating D