



75

HUNTERS[®]
HERE TO GET *you* THERE

Flat 75 The Dale, Woodseats, Sheffield, S8 0PS

Flat 75 The Dale, Woodseats, Sheffield, S8 0PS

£150,000

Welcome to this charming two-bedroom flat located in the heart of Woodseats, Sheffield. This apartment boasts a separate modern kitchen area from the living area for added convenience.

The apartment features an entrance hall with access to the two bedrooms, shower room, kitchen and living room.

The highlight of this property is the access to a roof terrace, where you can enjoy the fresh air and beautiful views of the surrounding area.

Situated in the centre of Woodseats, you'll have easy access to local amenities, shops, and restaurants, making it a convenient location for your daily needs. Whether you're a first-time buyer, looking to downsize, or seeking an investment opportunity, this flat offers a comfortable and practical living space.

Don't miss out on the chance to make this lovely flat your new home. Contact us today to arrange a viewing and experience the warmth and charm this property has to offer.

GENERAL REMARKS

TENURE

This property is long Leasehold with a term of 999 years from 1st March 1987 at a ground rent of £** per annum.

There is a service charge payable of £** per annum.

RATING ASSESSMENT

We are verbally advised by the Local Authority that the property is assessed for Council Tax purposes to Band A.

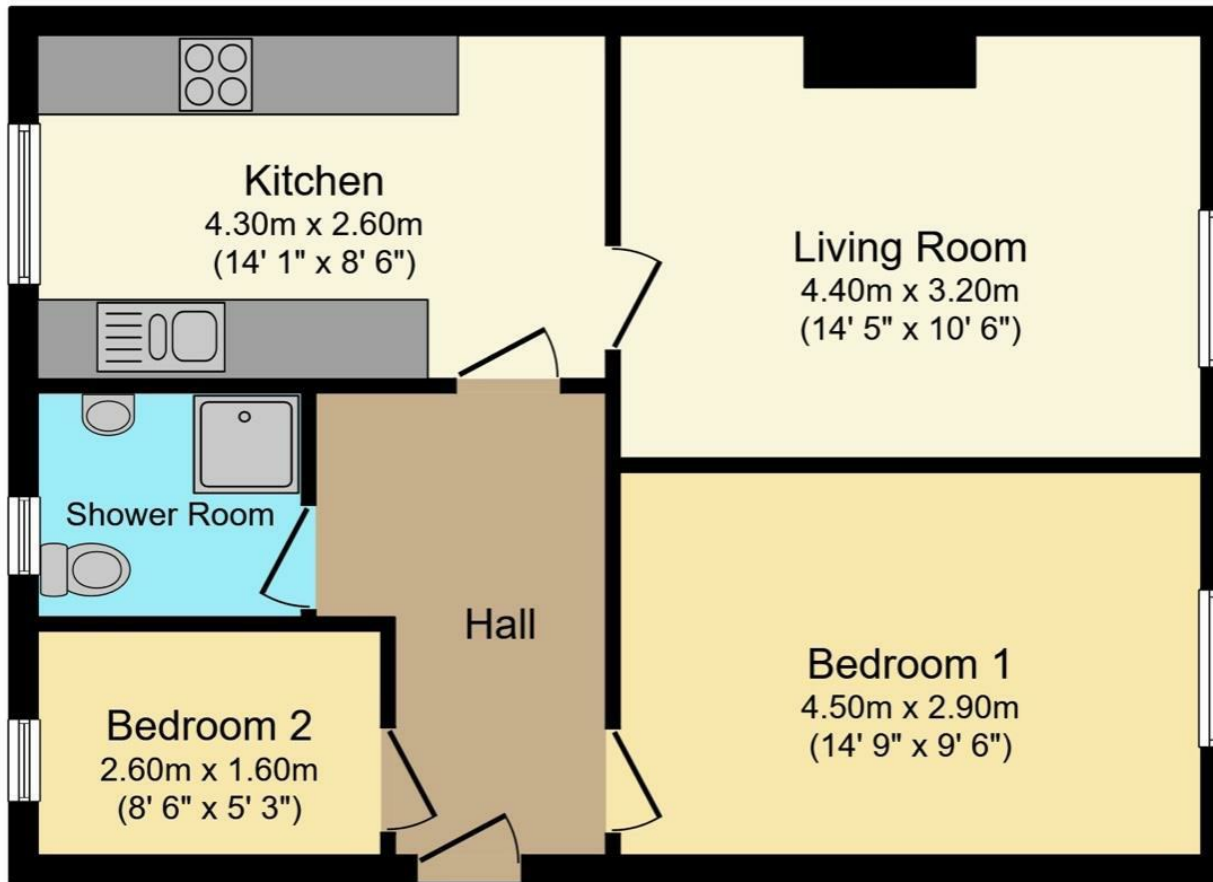
VACANT POSSESSION

Vacant possession will be given on completion and all fixtures and fittings mentioned in the above particulars are to be included in the sale.

MORTGAGE FACILITIES

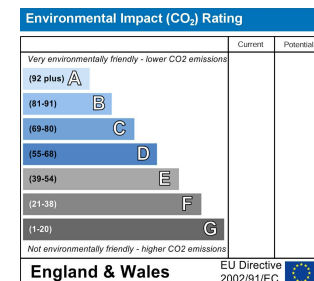
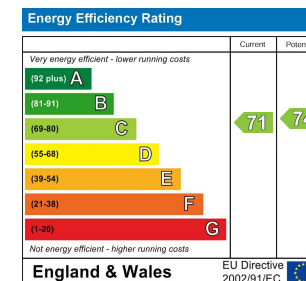
We should be pleased to advise you in obtaining the best type of Mortgage to suit your individual requirements. YOUR HOME IS AT RISK IF YOU DO NOT KEEP UP REPAYMENTS ON A MORTGAGE OR OTHER LOANS SECURED ON IT.

Hunters Sheffield - Woodseats 764 Chesterfield Road, Woodseats, S8 0SE | 0114 258 0111
sheffieldwoodseats@hunters.com | www.hunters.com




Total floor area 54.6 m² (587 sq.ft.) approx

This floor plan is for illustrative purposes only. It is not drawn to scale. Any measurements, floor areas (including any total floor area), openings and orientation are approximate. No details are guaranteed, they cannot be relied upon for any purpose and they do not form part of any agreement. No liability is taken for any error, omission or misstatement. A party must rely upon its own inspection(s). Powered by www.focalagent.com



Energy Efficiency Rating

	Current	Potential
<i>Very energy efficient - lower running costs</i>		
(92 plus) A		
(81-91) B		
(69-80) C	71	74
(55-68) D		
(39-54) E		
(21-38) F		
(1-20) G		
<i>Not energy efficient - higher running costs</i>		
England & Wales	EU Directive 2002/91/EC	

These particulars are intended to give a fair and reliable description of the property but no responsibility for any inaccuracy or error can be accepted and do not constitute an offer or contract. We have not tested any services or appliances (including central heating if fitted) referred to in these particulars and the purchasers are advised to satisfy themselves as to the working order and condition. If a property is unoccupied at any time there may be reconnection charges for any switched off/disconnected or drained services or appliances - All measurements are approximate. If you are thinking of selling your home or just curious to discover the value of your property, Hunters would be pleased to provide free, no obligation sales and marketing advice. Even if your home is outside the area covered by our local offices we can arrange a Market Appraisal through our national network of Hunters estate agents.





