



HUNTERS[®]
HERE TO GET *you* THERE

4 Brindley Close, Norton Lees, Sheffield, S8 8PX

4 Brindley Close, Norton Lees, Sheffield, S8 8PX

£200,000

Nestled in Brindley Close, Norton Lees, this delightful townhouse is a true gem waiting to be discovered. Boasting a spacious reception room, three bedrooms, and a modern shower room, this property offers comfort and style in equal measure.

On entering the property there is a ground floor cloakroom/w.c with the heart of this home being the inviting dining kitchen, perfect for hosting family gatherings or intimate dinners with friends. To the middle of the ground floor is the open living room with access through to the rear conservatory. To the first floor is the landing, three bedrooms and modern shower room. Externally the property has a low maintenance and landscaped rear garden being an ideal space for alfresco dining.

One of the standout features of this property is the addition of solar PV panels to the roof, a fantastic eco-friendly touch that not only reduces your carbon footprint but also saves you money on energy bills. Embrace sustainable living without compromising on comfort.

The freehold status and no onward chain make this a hassle-free investment, allowing you to move in and make it your own without delay.

GENERAL REMARKS

TENURE

This property is Freehold.

RATING ASSESSMENT

We are verbally advised by the Local Authority that the property is assessed for Council Tax purposes to Band A.

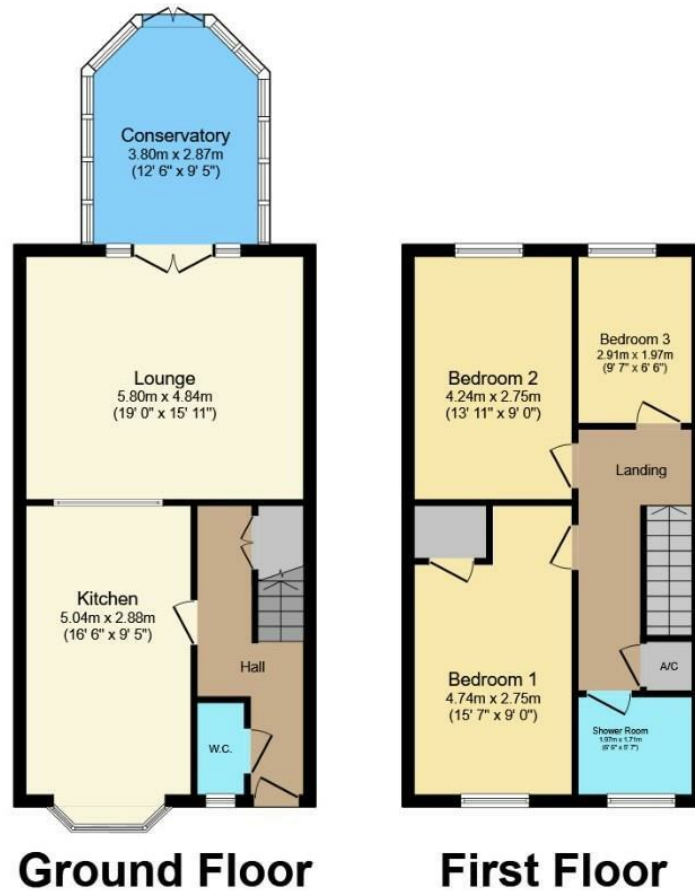
VACANT POSSESSION

Vacant possession will be given on completion and all fixtures and fittings mentioned in the above particulars are to be included in the sale.

MORTGAGE FACILITIES

We should be pleased to advise you in obtaining the best type of Mortgage to suit your individual requirements. **YOUR HOME IS AT RISK IF YOU DO NOT KEEP UP REPAYMENTS ON A MORTGAGE OR OTHER LOANS SECURED ON IT.**

Hunters Sheffield - Woodseats 764 Chesterfield Road, Woodseats, S8 0SE | 0114 258 0111
sheffieldwoodseats@hunters.com | www.hunters.com



Total floor area 102.4 m² (1,102 sq.ft.) approx


This floor plan is for illustrative purposes only. It is not drawn to scale. Any measurements, floor areas (including any total floor area), openings and orientation are approximate. No details are guaranteed, they cannot be relied upon for any purpose and they do not form part of any agreement. No liability is taken for any error, omission or misstatement. A party must rely upon its own inspection(s).

Powered by www.focalagent.com

Energy Efficiency Rating		
	Current	Potential
Very energy efficient - lower running costs		
(92 plus) A		
(81-91) B		
(69-80) C		
(55-68) D		
(39-54) E		
(21-38) F		
(1-20) G		
Not energy efficient - higher running costs		
England & Wales	EU Directive 2002/91/EC	

Environmental Impact (CO ₂) Rating		
	Current	Potential
Very environmentally friendly - lower CO ₂ emissions		
(92 plus) A		
(81-91) B		
(69-80) C		
(55-68) D		
(39-54) E		
(21-38) F		
(1-20) G		
Not environmentally friendly - higher CO ₂ emissions		
England & Wales	EU Directive 2002/91/EC	

Energy Efficiency Rating

	Current	Potential
<i>Very energy efficient - lower running costs</i>		
(92 plus) A		
(81-91) B		
(69-80) C		
(55-68) D		
(39-54) E		
(21-38) F		
(1-20) G		
<i>Not energy efficient - higher running costs</i>		
England & Wales	EU Directive 2002/91/EC	

These particulars are intended to give a fair and reliable description of the property but no responsibility for any inaccuracy or error can be accepted and do not constitute an offer or contract. We have not tested any services or appliances (including central heating if fitted) referred to in these particulars and the purchasers are advised to satisfy themselves as to the working order and condition. If a property is unoccupied at any time there may be reconnection charges for any switched off/disconnected or drained services or appliances - All measurements are approximate. If you are thinking of selling your home or just curious to discover the value of your property, Hunters would be pleased to provide free, no obligation sales and marketing advice. Even if your home is outside the area covered by our local offices we can arrange a Market Appraisal through our national network of Hunters estate agents.









