

Dorchester Road, Lytchett Minster, BH16 6JF

**Guide Price £235,000**

- Planning Granted
- Four Bedroom Family Home
- Build Your Dream Home
- Quality Local Schooling
- Rare Opportunity
- Plot of Land For Sale
- Envious Location
- Rural Views
- Lovely Garden

# 2 Studland Cottages Dorchester Road, Poole BH16 6JF

We are delighted to offer for sale this plot of land with planning granted for a wonderful family home with rural views.



Council Tax Band: New Build



### Dorchester Road, Lytchett Minster

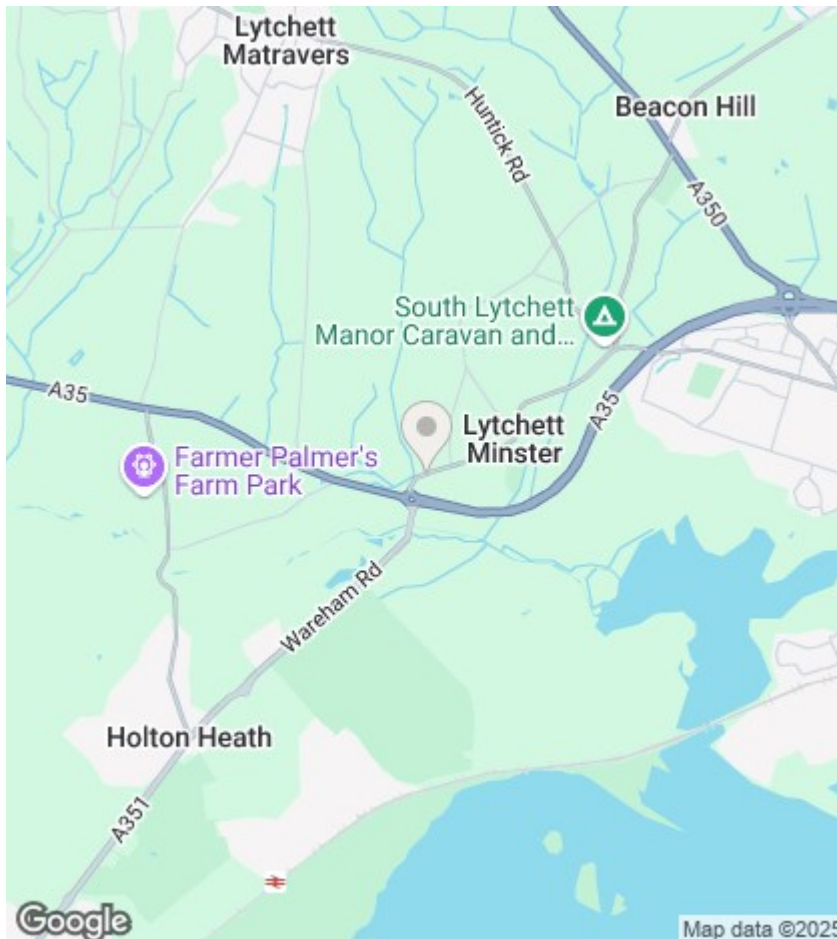
If you've been searching for a plot of land to build your very own dream home or simply looking for your next development project, this opportunity could be perfect for you.

Planning has been granted for a four bedroom, two reception detached family home in excess of 1,600 sq feet. The garden will be a lovely size with rural views from the majority of the first floor accommodation.

Based on market conditions and recent comparable sales, we believe the value of the finished house would be £700,000-£725,000.

For more information regarding CIL payments, obligations or anything else please contact our Upton office.

Planning application number: P/FUL/2024/05324



## Agents Note

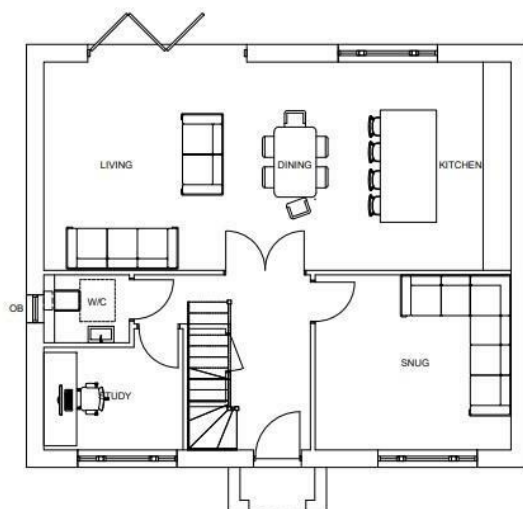
Whilst every attempt has been made to ensure the accuracy of details and measurements contained in these particulars, they are not to be relied upon especially when potential cost could be incurred. No appliances have been tested so the agent cannot verify that they are in working order. The agent has not seen any legal documentation to verify the legal status of the property. This must be verified by your chosen solicitor.

## Viewings

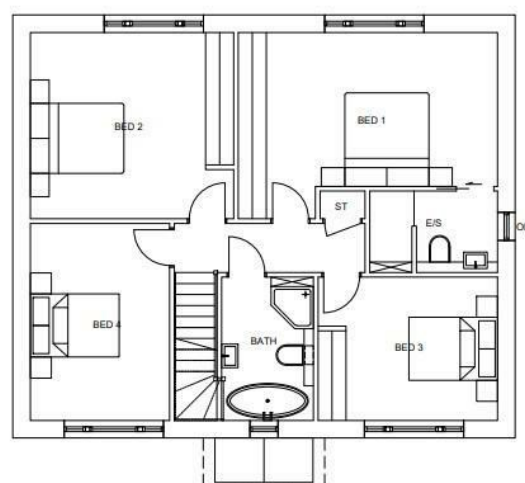
Viewings by arrangement only. Call 01202 622101 to make an appointment.

## EPC Rating:

Energy Efficiency Rating		
	Current	Potential
Very energy efficient - lower running costs		
(92 plus) <b>A</b>		
(81-91) <b>B</b>		
(69-80) <b>C</b>		
(55-68) <b>D</b>		
(39-54) <b>E</b>		
(21-38) <b>F</b>		
(1-20) <b>G</b>		
Not energy efficient - higher running costs		
<b>England &amp; Wales</b>	EU Directive 2002/91/EC	



GROUND FLOOR



FIRST FLOOR