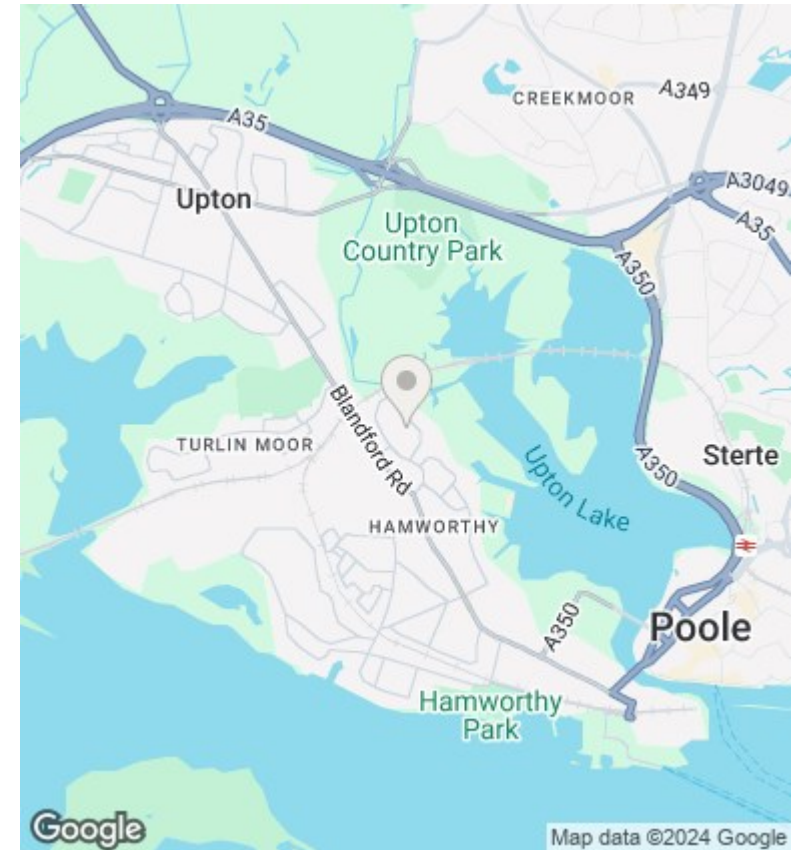
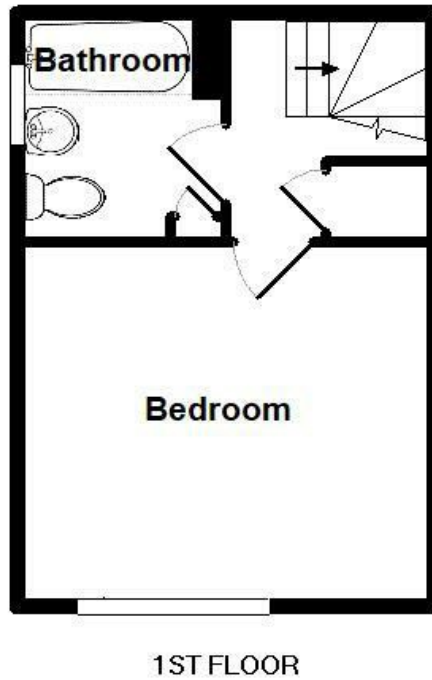
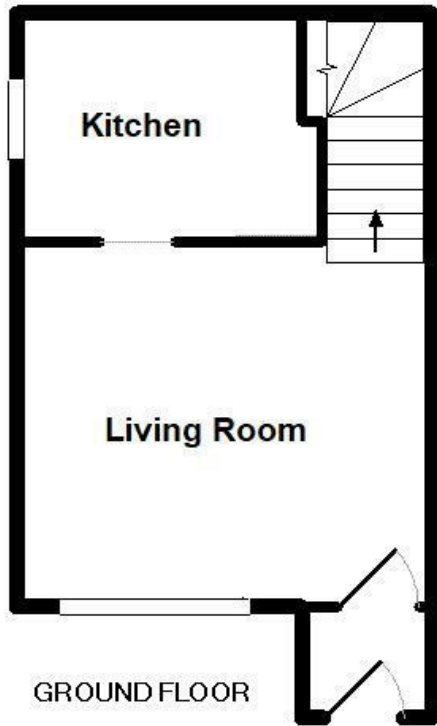




205 Hewitt Road, Hamworthy, Poole, Dorset, BH15 4QF

£1,000 Per Calendar Month

- Cluster House
- Close to Cobbs Quay
- Allocated Parking Space
- Call To View!
- One Double Bedroom
- Gas Central Heating
- Cul-De-Sac Location
- Immaculately Presented
- UPVC Double Glazing
- Available 19th October



Directions

Viewings

Viewings by arrangement only. Call 01202 622101 to make an appointment.

Council Tax Band

B

EPC Rating:

C

Energy Efficiency Rating		Current	Potential
<i>Very energy efficient - lower running costs</i>			
(92 plus) A			89
(81-91) B			
(69-80) C		71	
(55-68) D			
(39-54) E			
(21-38) F			
(1-20) G			
<i>Not energy efficient - higher running costs</i>			
England & Wales		EU Directive 2002/91/EC	