



6 Aldis Gardens, Hamworthy, Poole, BH15 4EB

Asking Price £315,000

- Semi-Detached House
- Extended Accommodation
- Single Garage
- Cul-de-Sac Location
- Requires Modernisation
- Three Bedrooms
- Off-Road Parking
- Large Living Area
- Solar Panel System
- No Forward Chain

6 Aldis Gardens, Poole BH15 4EB

NO FORWARD CHAIN! An extended & spacious, semi-detached house situated in a popular residential cul-de-sac. Requiring a level of modernisation but benefitting from an owned solar panel system.



Council Tax Band: C



Aldis Gardens

The extended accommodation comprises three bedrooms, large living room with adjoining dining area, separate kitchen, family bathroom and downstairs shower room (requires reinstating).

Further benefits include off-road parking, a single garage, gas central heating, UPVC double glazing and a solar panel system with battery.

Whilst the property does require a level of modernisation, the potential is fantastic given the immediate footprint on offer. In our opinion, internal viewing is encouraged at your earliest convenience to appreciate! To arrange, or for more information, please call our Upton Branch.



Agents Note

Whilst every attempt has been made to ensure the accuracy of details and measurements contained in these particulars, they are not to be relied upon especially when potential cost could be incurred.

No appliances have been tested so the agent cannot verify that they are in working order. The agent has not seen any legal documentation to verify the legal status of the property. This must be verified by your chosen solicitor.

Viewings

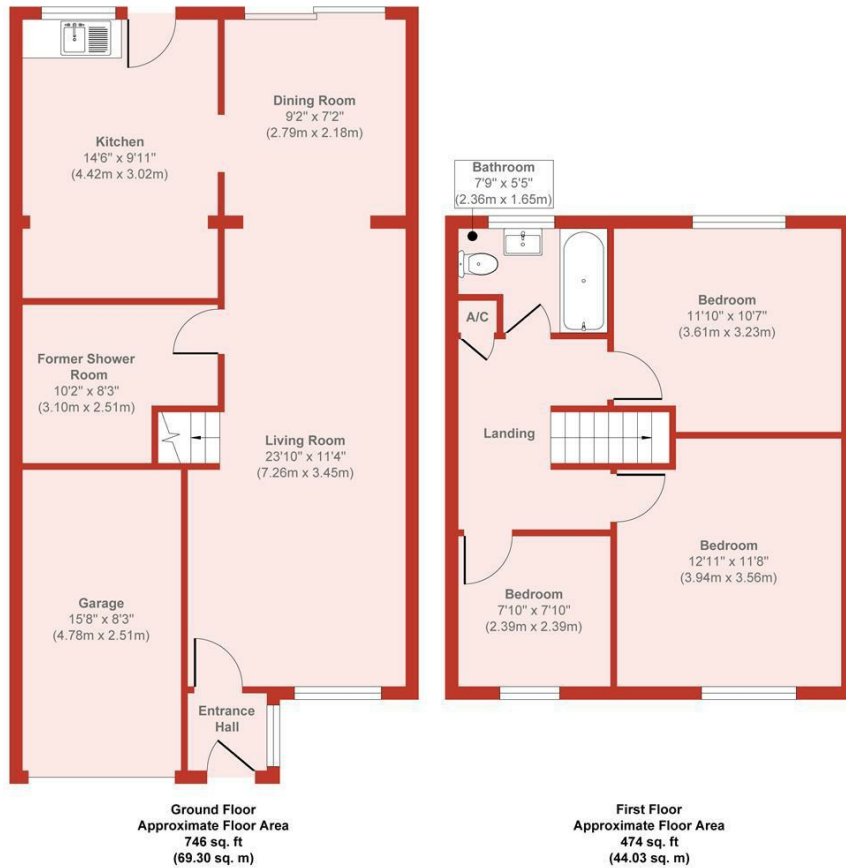
Viewings by arrangement only. Call 01202 622101 to make an appointment.

EPC Rating:

C

Energy Efficiency Rating		Current	Potential
Very energy efficient - lower running costs			
(92 plus) A			
(81-91) B			85
(69-80) C		71	
(55-68) D			
(39-54) E			
(21-38) F			
(1-20) G			
Not energy efficient - higher running costs			
England & Wales		EU Directive 2002/91/EC	

Aldis Gardens



Produced by Elements Property