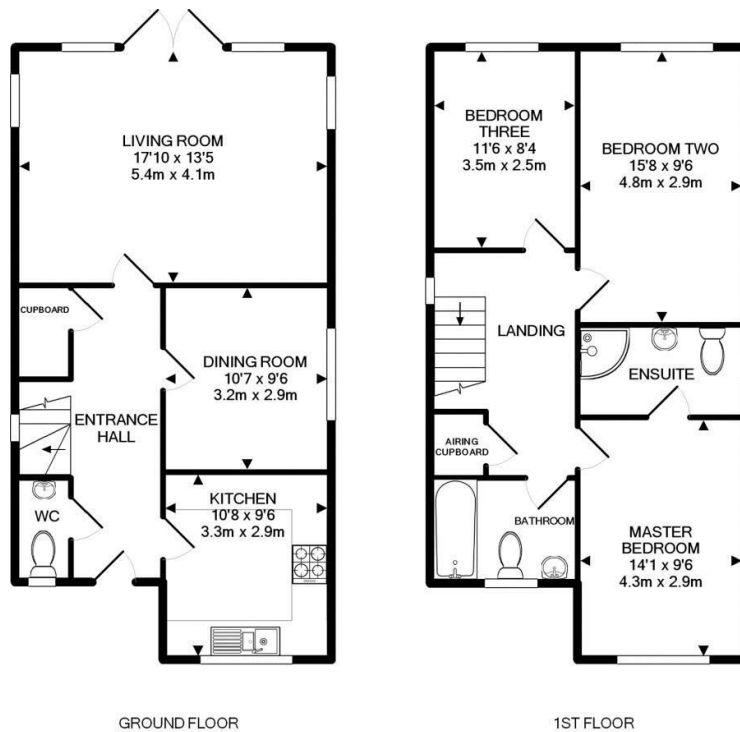




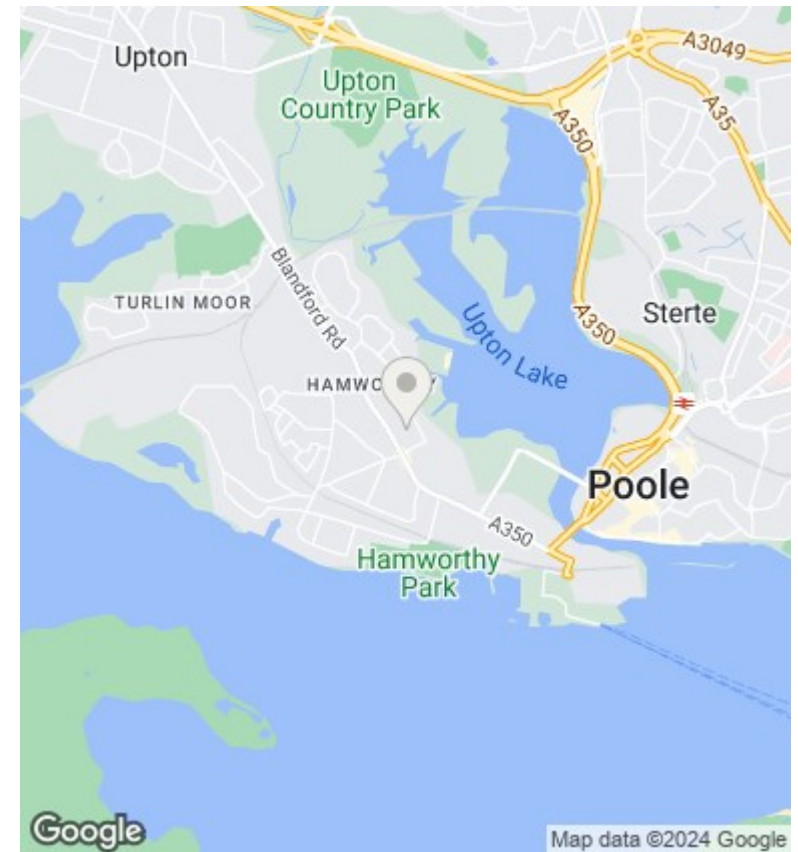
7b Woodlands Crescent, Hamworthy, Poole, BH15 4EN

£1,850 Per Calendar Month

- Detached Family Home
- Front & Rear Gardens
- Summer House
- Available Now!
- Three/Four Bedrooms
- Off-Road Parking
- Gas Central Heating
- Secluded Development
- Modern Throughout
- UPVC Double Glazing



Whilst every attempt has been made to ensure the accuracy of the floor plan contained here, measurements of doors, windows, rooms and any other items are approximate and no responsibility is taken for any error, omission, or mis-statement. This plan is for illustrative purposes only and should be used as such by any prospective purchaser. The services, systems and appliances shown have not been tested and no guarantee as to their operability or efficiency can be given
 Made with Metropix ©2014



Directions

Down bottom of private road (Woodlands Glen) at top of crescent... Bought as new build which Norton built...

Viewings

Viewings by arrangement only. Call 01202 622101 to make an appointment.

Council Tax Band

E

EPC Rating:

B

Energy Efficiency Rating		Current	Potential
<i>Very energy efficient - lower running costs</i>			
(92 plus)	A		92
(81-91)	B	83	
(69-80)	C		
(55-68)	D		
(39-54)	E		
(21-38)	F		
(1-20)	G		
<i>Not energy efficient - higher running costs</i>			
England & Wales		EU Directive 2002/91/EC	