



HUNTERS[®]
HERE TO GET *you* THERE

Roisfield Green Moor, Wortley, Sheffield, S35 7DQ

Roisfield Green Moor, Wortley, Sheffield, S35 7DQ

£570,000

Nestled in the charming village of Green Moor, Sheffield, this stunning semi-detached house offers a unique opportunity to embrace countryside living at its finest. Boasting not just one, but two reception rooms, along with five spacious bedrooms, this property is perfect for those seeking a blend of comfort and style.

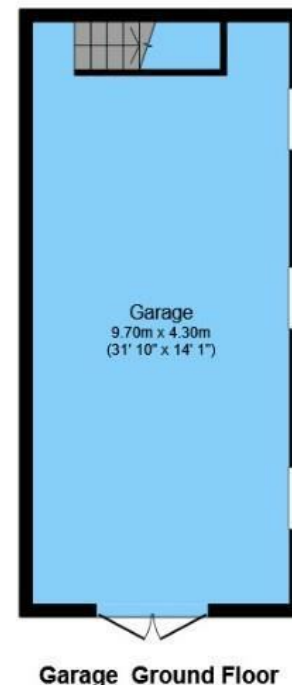
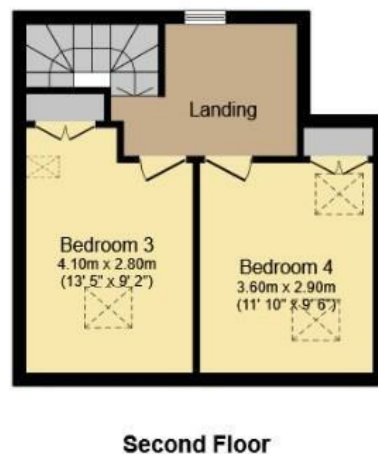
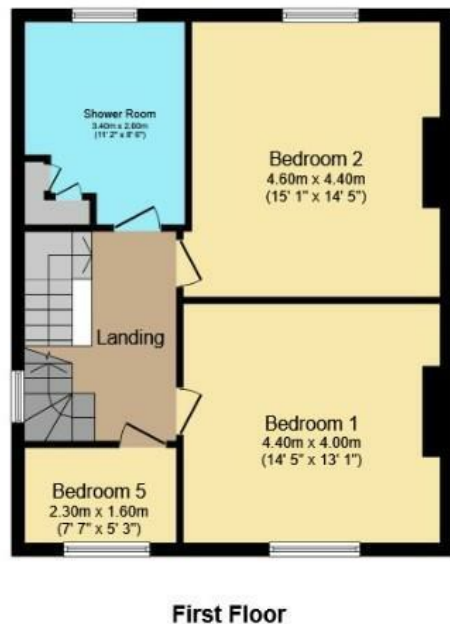
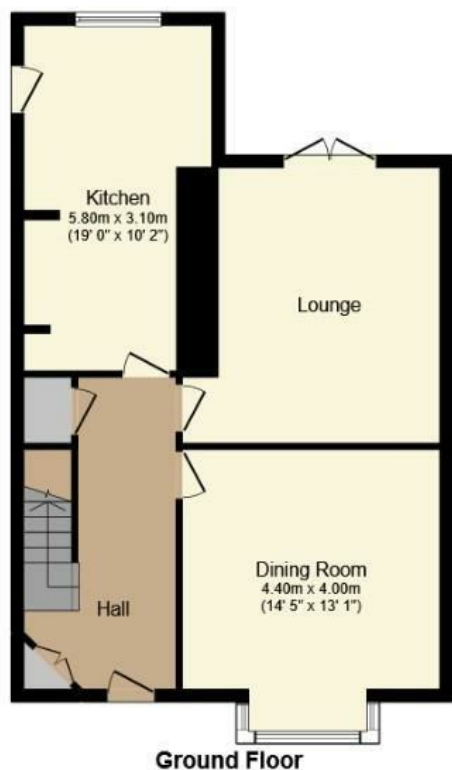
As you step inside, you'll be greeted by a cosy lounge featuring a bay window and an inviting open fire, ideal for relaxing evenings. The adjacent dining room exudes warmth with a log burner and French doors that lead out to a picturesque patio, perfect for al fresco dining or enjoying a morning coffee.

The kitchen is a true highlight, complete with fitted units and an oil-filled AGA, promising a delightful cooking experience. Upstairs, the first floor accommodates two double bedrooms and a charming study or nursery, offering versatility to suit your needs. The bathroom provides a tranquil space to unwind and rejuvenate.

Venture up to the second floor to discover two additional double bedrooms, each offering comfort and privacy. Outside, a driveway provides ample parking space, while granting access to the expansive gardens, stone outbuildings, and a detached two-storey quad garage with a room above. Not to mention the paddock and further garden having patio with chess set perfect for those with equestrian interests or simply to enjoy the outdoors.

This property truly offers a unique opportunity to embrace countryside living, with magnificent views over the surrounding landscape. Don't miss out on the chance to make this house your home and create unforgettable memories in this idyllic setting.

Hunters Sheffield - Crookes 208 Crookes, Sheffield, S10 1TG | 0114 266 6626
sheffieldcrookes@hunters.com | www.hunters.com



Total floor area 229.2 m² (2,467 sq.ft.) approx

This floor plan is for illustrative purposes only. It is not drawn to scale. Any measurements, floor areas (including any total floor area), openings and orientation are approximate. No details are guaranteed, they cannot be relied upon for any purpose and they do not form part of any agreement. No liability is taken for any error, omission or misstatement. A party must rely upon its own inspection(s).

Powered by www.focalagent.com

GENERAL REMARKS

TENURE

This property is Freehold.

RATING ASSESSMENT

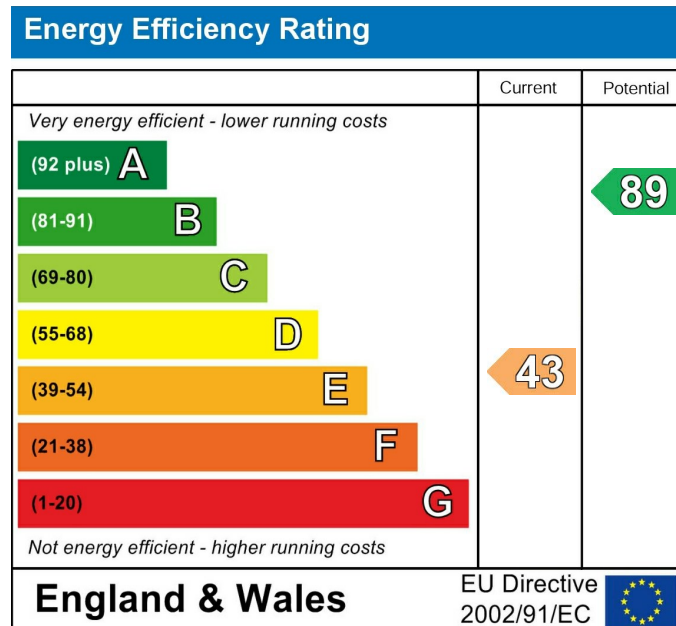
We are verbally advised by the Local Authority that the property is assessed for Council Tax purposes to Band E.

VACANT POSSESSION

Vacant possession will be given on completion and all fixtures and fittings mentioned in the above particulars are to be included in the sale.

MORTGAGE FACILITIES

We should be pleased to advise you in obtaining the best type of Mortgage to suit your individual requirements.
YOUR HOME IS AT RISK IF YOU DO NOT KEEP UP REPAYMENTS ON A MORTGAGE OR OTHER LOANS SECURED ON IT.



These particulars are intended to give a fair and reliable description of the property but no responsibility for any inaccuracy or error can be accepted and do not constitute an offer or contract. We have not tested any services or appliances (including central heating if fitted) referred to in these particulars and the purchasers are advised to satisfy themselves as to the working order and condition. If a property is unoccupied at any time there may be reconnection charges for any switched off/disconnected or drained services or appliances - All measurements are approximate. If you are thinking of selling your home or just curious to discover the value of your property, Hunters would be pleased to provide free, no obligation sales and marketing advice. Even if your home is outside the area covered by our local offices we can arrange a Market Appraisal through our national network of Hunters estate agents.











