



BerkeleyShaw
REAL ESTATE

34 Twigden Close, Liverpool, L10 1NG

£1,000 PCM

Nestled in the charming area of Twigden Close, Liverpool, this delightful three-bedroom semi-detached house offers a perfect blend of comfort and convenience. Ideal for families or those seeking extra space, the property boasts a well-designed layout that maximises both functionality and style.

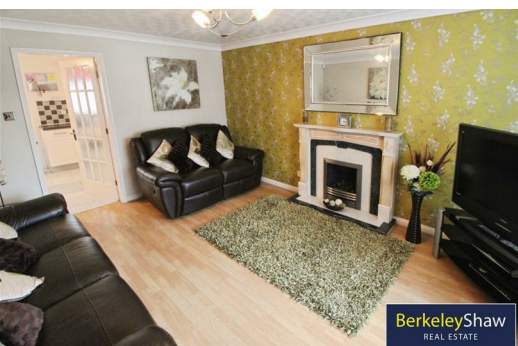
The spacious living areas are perfect for relaxation and entertaining, while the conservatory provides a lovely spot to enjoy the garden views, making it an ideal space for family gatherings or quiet evenings.

The property features a well-appointed bathroom, and each of the three bedrooms is generously sized, providing ample room for families.

Outside, the front and rear gardens offer a wonderful opportunity for outdoor enjoyment, whether it be for children to play or for hosting summer barbecues. The driveway adds to the convenience, providing off-road parking for your vehicles.

This home is not just a property; it is a place where memories can be made. With its appealing features and prime location, it presents an excellent opportunity for those looking to settle in a vibrant community. Don't miss the chance to make this lovely house your new home.

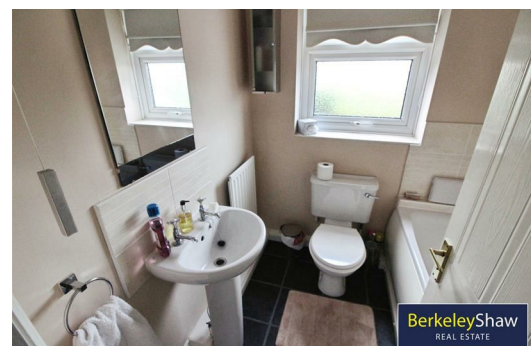
Deposit - £1000
Council Tax band - C



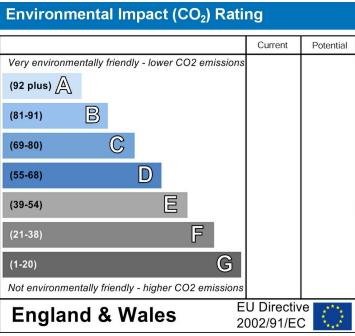
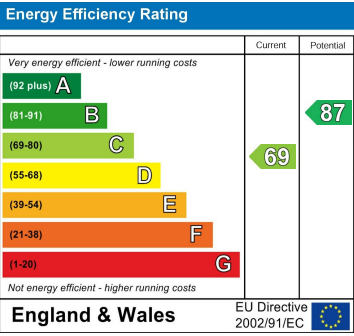
BerkeleyShaw
REAL ESTATE



BerkeleyShaw
REAL ESTATE



BerkeleyShaw
REAL ESTATE



Berkeley Shaw Estate Agents Limited.
Company No. 0784754

Berkeley Shaw Real Estate Limited.
Company No. 05206927

