



6 Neptune Place Grafton Street, Liverpool, Merseyside L8 5AP

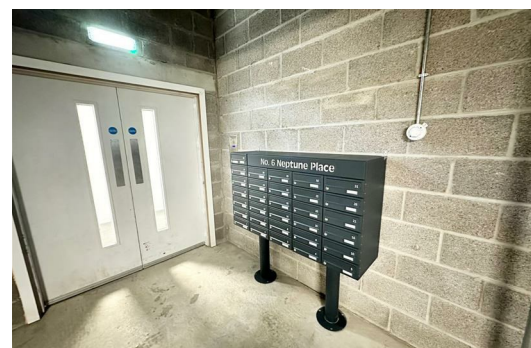
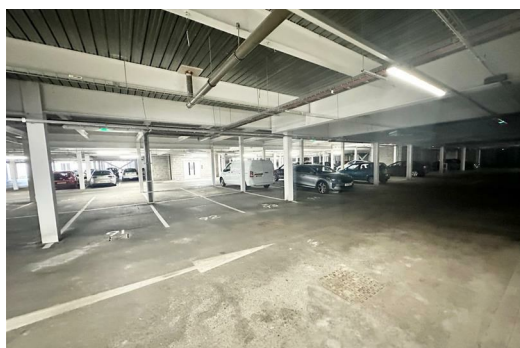
£950 PCM

TO LET ONE BEDROOM FORTH FLOOR FURNISHED APARTMENT, Welcome to Neptune Place in the vibrant Baltic Square, Liverpool! This charming ground floor apartment boasts a cosy reception room, perfect for relaxing or entertaining guests. With one bedroom and one bathroom, this furnished property offers a comfortable and convenient living space. One Allocated Parking Bay in under ground carpark.

Situated close to the docks, you'll enjoy the picturesque views and the bustling atmosphere of this historic area.

Don't miss out on the chance to make Neptune Place your new home. Book a viewing today and experience the best of Liverpool living in this delightful apartment.

Deposit £950.00
Minimum term 12 months
Council Tax band : B



Hallway

Entrance door, laminate flooring, electric wall heater

Open Plan Lounge Kitchen

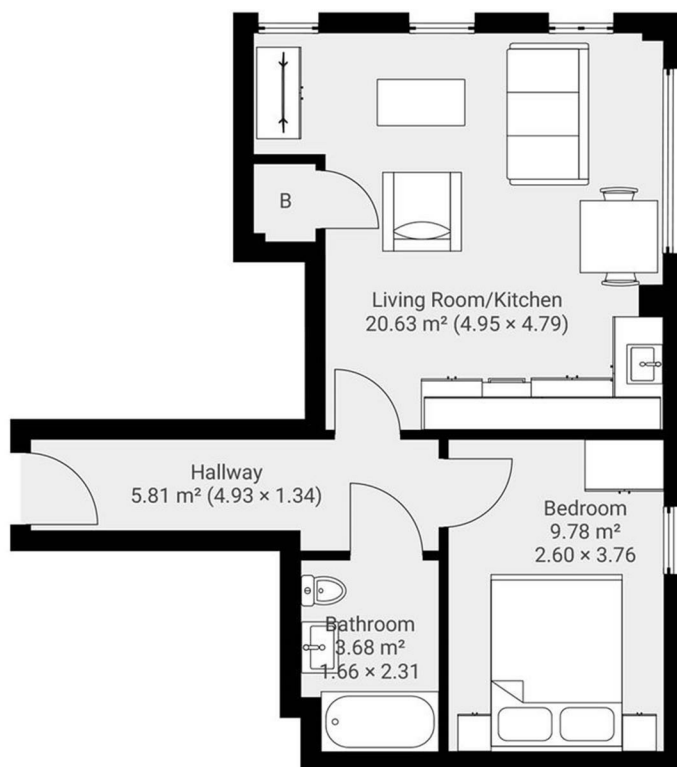
Double glazed windows, laminate flooring, walk in storage cupboard with water cylinder, kitchen comprises of a range of fitted base and wall units with stainless steel single sink and drainer with mixer tap, appliance include electric oven and hob, extractor hood, under counter fridge with ice box, washing machine. furnishings include sofa, chair, dining table and two chairs, coffee table, tv stand, tv

Bedroom 1

Double glazed windows, electric wall heater, carpet, furnishings include double bed mattress and headboard, bedside cabinets, 2 door wardrobe

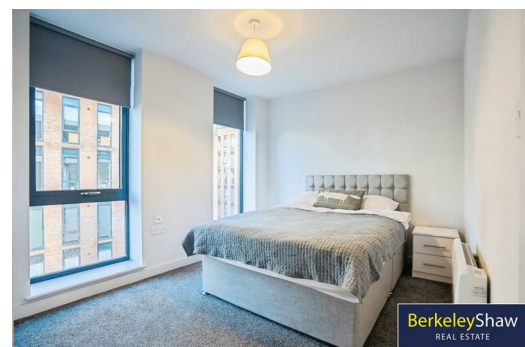
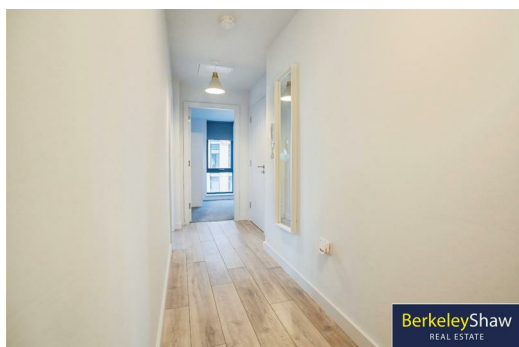
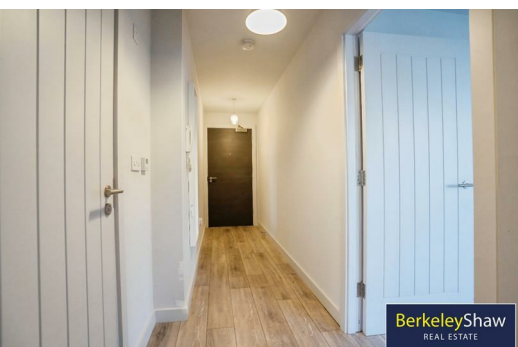
Bathroom

Part tiled walls and flooring, ladder towel rail, panelled bath with shower over and glazed screen, sink, low level w.c. large mirror



Energy Efficiency Rating		
	Current	Potential
Very energy efficient - lower running costs		
(92 plus) A		
(81-91) B		
(69-80) C		
(55-68) D		
(39-54) E		
(21-38) F		
(1-20) G		
Not energy efficient - higher running costs		
	81	81
EU Directive 2002/91/EC		
England & Wales		

Environmental Impact (CO ₂) Rating		
	Current	Potential
Very environmentally friendly - lower CO ₂ emissions		
(92 plus) A		
(81-91) B		
(69-80) C		
(55-68) D		
(39-54) E		
(21-38) F		
(1-20) G		
Not environmentally friendly - higher CO ₂ emissions		
EU Directive 2002/91/EC		
England & Wales		



Berkeley Shaw Estate Agents Limited.
Company No. 0784754

Berkeley Shaw Real Estate Limited.
Company No. 05206927

