



BerkeleyShaw

Unity Building, 3 Rumford Place, Liverpool, Merseyside L3 9BZ

£1,600 PCM

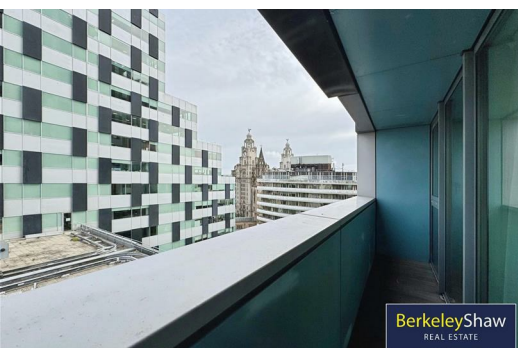
With spectacular city and river views, generous living space across two floors, and a prime location in Liverpool's iconic business district, this beautifully presented three-bedroom duplex apartment in The Unity Building is a true gem.

Positioned on the 9th floor of this sought-after development on Rumford Place, the property enjoys an elevated vantage point offering uninterrupted views of the River Mersey and the world-famous Liver Building.

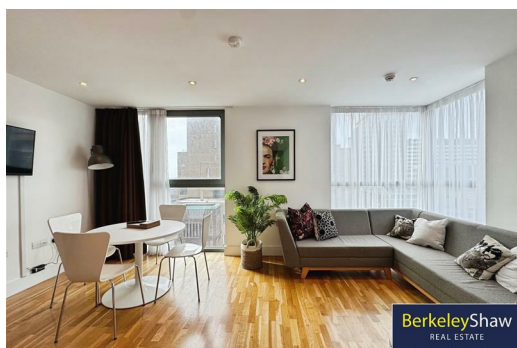
Accessed via a secure communal entrance with concierge service and lift access, the apartment opens on the lower level to a welcoming entrance hall. This floor hosts a brand new shower room, a storage cupboard and a generously sized bedroom. Large windows fill the space with natural light and frame stunning views to the river.

The upper level offers two further double bedrooms. The master bedroom is complete with fitted wardrobes, a sleek en-suite bathroom, and direct access to a private balcony boasting breathtaking views of the Liver Building. A third double bedroom provides flexibility for guests, home working, or further personal use.

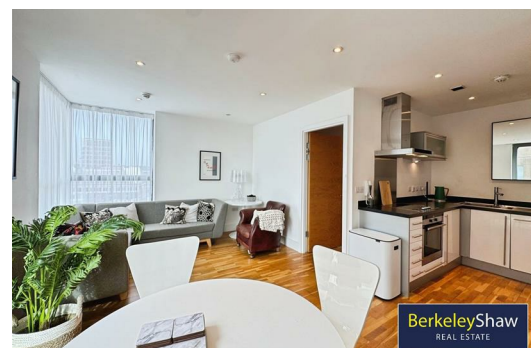
Also on this floor is the open-plan kitchen, dining, and living area – a superb space for entertaining or relaxing. Flooded with natural light from floor-to-ceiling windows, the living space is stylishly appointed, and the kitchen comes equipped with granite worktops and a full range of integrated appliances, including an electric hob, oven, fridge/freezer, washing machine, and dishwasher. The balcony can also be accessed from here,



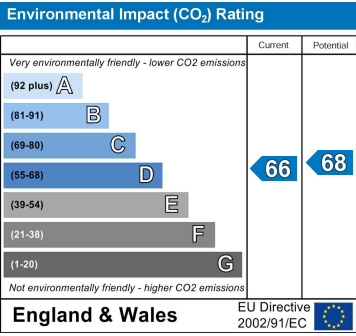
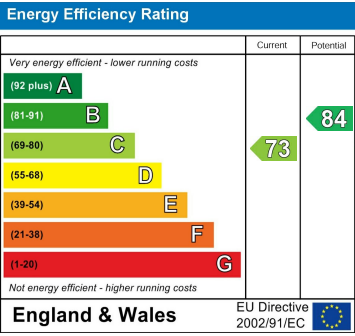
BerkeleyShaw
REAL ESTATE



BerkeleyShaw
REAL ESTATE



BerkeleyShaw
REAL ESTATE



Berkeley Shaw Estate Agents Limited.
Company No. 0784754

Berkeley Shaw Real Estate Limited.
Company No. 05206927

