



The Reach 39 Leeds Street, Liverpool, L3 2DA

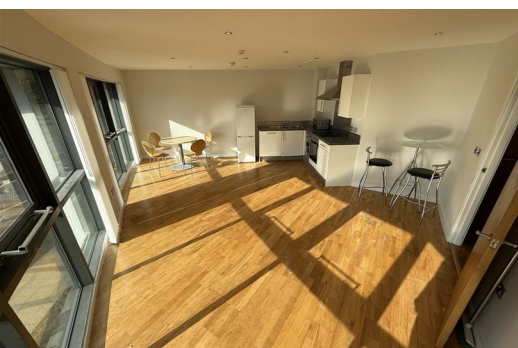
£900 Per Month

Nestled in the vibrant area of Leeds Street, Liverpool, this charming one-bedroom house offers a perfect blend of modern living and comfort. Built in 2006, this new build property spans an impressive 614 square feet, providing ample space for both relaxation and entertaining.

The apartment is part-furnished, allowing you to move in with ease and start enjoying your new home right away. The secure development ensures peace of mind, making it an ideal choice for those seeking a safe and welcoming environment.

With its contemporary design and thoughtful layout, this property is perfect for individuals or couples looking for a stylish and convenient living space. The location is well-connected, offering easy access to local amenities, transport links, and the vibrant culture that Liverpool has to offer.

Deposit: £900.00
Council Tax: Band B
Tenancy Term: 12months



BEDROOM

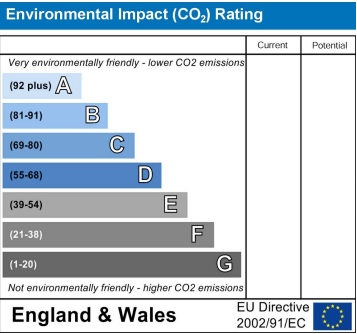
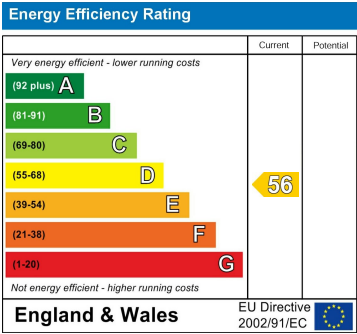
Large bedroom with furnishings apart from bed.

LOUNGE/KITCHEN

Large open plan kitchen/lounge with furnishings and fully equipped kitchen.

BATHROOM

Fully equipped bathroom, recently refurbished.



Berkeley Shaw Estate Agents Limited.
Company No. 0784754

Berkeley Shaw Real Estate Limited.
Company No. 05206927

