



Apartment 287 Ellerman Road, Liverpool, L3 4FE

£950 Per Month

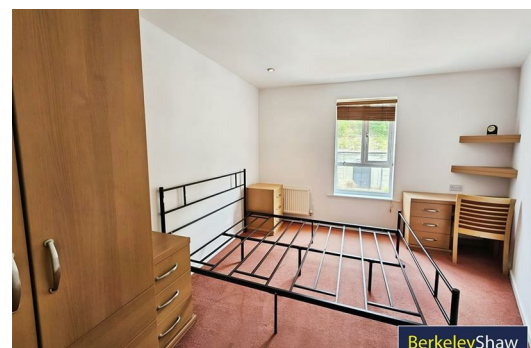
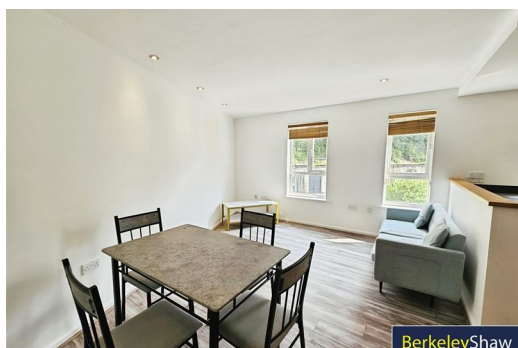
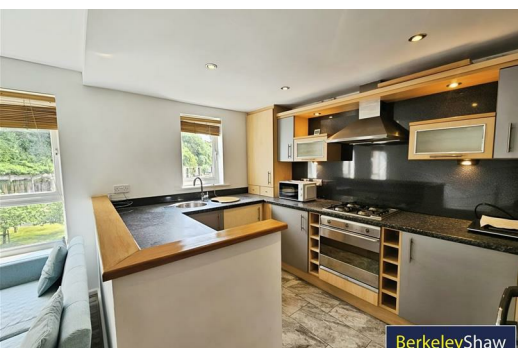
Berkeley Shaw are delighted to offer an apartment that ticks all the boxes, the apartment has been beautifully refurbished and is situated within the City Quay Development set in the heart of Liverpool.

This property is a two Bedroom FURNISHED second floor apartment complete with allocated parking.

The property comprises of hallway, open plan lounge/kitchen with appliances, two double bedrooms, modern bathroom with gas central heating. This apartment is fully double glazed.

Contact our office to arrange a viewing.

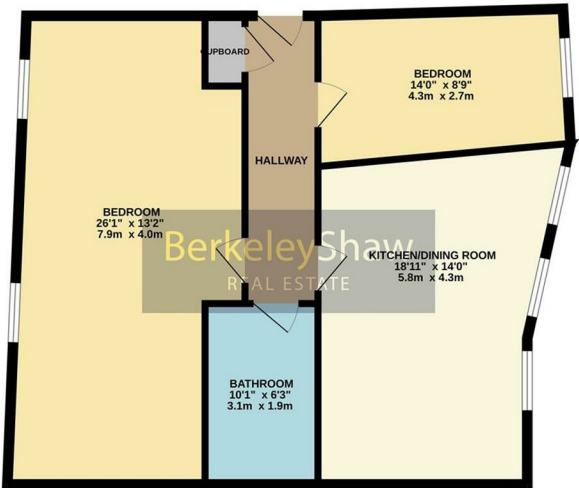
EPC - C
Minimum term- 12 months
Deposit- £1096.15



Energy Efficiency Rating		
	Current	Potential
Very energy efficient - lower running costs		
(92 plus) A		
(81-91) B		
(69-80) C		
(55-68) D		
(39-54) E		
(21-38) F		
(1-20) G		
Not energy efficient - higher running costs		
England & Wales EU Directive 2002/91/EC		

Environmental Impact (CO ₂) Rating		
	Current	Potential
Very environmentally friendly - lower CO ₂ emissions		
(92 plus) A		
(81-91) B		
(69-80) C		
(55-68) D		
(39-54) E		
(21-38) F		
(1-20) G		
Not environmentally friendly - higher CO ₂ emissions		
England & Wales EU Directive 2002/91/EC		

GROUND FLOOR
770 sq.ft. (71.5 sq.m.) approx.



TOTAL FLOOR AREA: 770 sq.ft. (71.5 sq.m.) approx.
While every attempt has been made to ensure the accuracy of the floorplan contained here, measurements of floor, window, room and any other items are approximate and no responsibility is taken for any error. Prospective purchasers are advised to verify the accuracy of any measurements and to make their own judgment as to the suitability of the property for their requirements. The services, systems and appliances shown here have not been tested and no guarantee can be given as to their availability or efficiency for the future.
 Made with Floorplan 12.025



Berkeley Shaw Estate Agents Limited.
Company No. 0784754

Berkeley Shaw Real Estate Limited.
Company No. 05206927

