



## Beetham Plaza, 25 The Strand, Liverpool, Merseyside L2 0XJ

### £1,795 PCM

Berkeley Shaw are pleased to offer TO LET FURNISHED TWO BEDROOM APARTMENT high specification, luxury apartment on the SECOND FLOOR of the exclusive Beetham Plaza development. STUNNING VIEWS OF THE THREE GRACES.

The complex boasts a number of benefits for residents, including a concierge, lifts access, communal gymnasium and external recreation areas, as well as secure underground parking facilities for residence, high standard, with high quality fixtures and fittings utilised throughout. The property comprises entrance hall, spacious open plan kitchen/living/dining area with air conditioning, floor to ceiling double glazed windows, two double bedroom, ensuite shower room to main bedroom, bathroom with bath and shower over.

An early inspection of this wonderful home is recommended in order to not miss out on a fantastic opportunity.

Council Tax band: E

Deposit: £2071

Rental Duration: minimum 12 months





## Hallway

Wooden floor, access to all rooms

## Open Plan Lounge / Kitchen / Diner

Double glazed floor to ceiling windows, wooden floor, electric wall heaters, air conditioning unit, Kitchen comprises of a range of fitted wall and base units with moulded granite work surfaces, integrated appliances, furnishings include dining table and chairs, sofas, coffee table, side boards

## Bedroom 1

Double glazed window, electric wall heater, carpet furnishings include double bed and mattress, wardrobe, chest of drawers, bedside tables

## Ensuite Shower Room

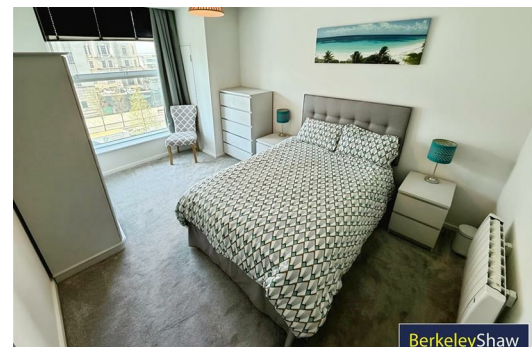
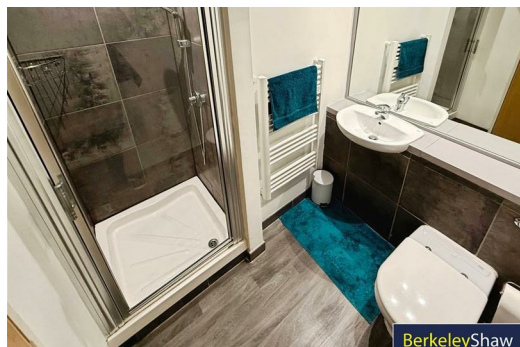
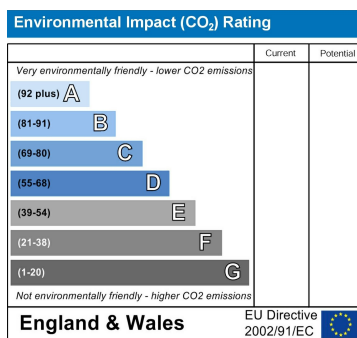
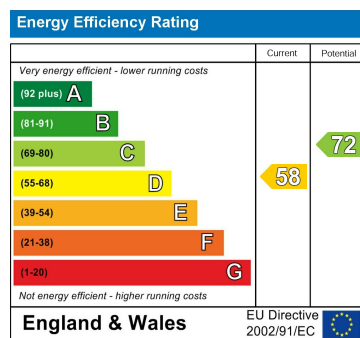
Tiled walls, walk in shower cubical, tiled floor, low level w.c. sink

## Bedroom 2

Double glazed window, electric wall heater, carpet furnishings include double bed and mattress, bedside cabinet, wardrobe, chest of drawers

## Bathroom

Tiled, walls and floor, panelled bath with shower over, low level w.c. and sink, ladder towel rail.



Berkeley Shaw Estate Agents Limited.  
Company No. 0784754

Berkeley Shaw Real Estate Limited.  
Company No. 05206927

