



## Apt 2 The Knowles, Blundellsands, Merseyside L23 6AB

£1,200 PCM

Welcome to The Knowles in the charming area of Blundellsands! we have TO LET This delightful 2 Bedroom GROUND FLOOR apartment boasts an Open Plan Lounge / Kitchen, two comfortable bedrooms, and two convenient bathrooms. The property features double glazing throughout, ensuring a peaceful and quiet atmosphere.

One of the highlights of this lovely apartment is the Juliet balcony with French doors opening into the lounge, allowing natural light to flood the space and creating a seamless indoor-outdoor feel. Imagine enjoying your morning coffee or evening tea while taking in the fresh sea breeze from the nearby beach.

Located close to the beach, this property offers the perfect opportunity for seaside living. Whether you enjoy leisurely strolls along the shore, picnics with loved ones, or simply watching the sunset over the water, this apartment provides easy access to the beauty of the coast.

Don't miss out on the chance to make this apartment your own and experience the tranquil lifestyle that Blundellsands has to offer. Embrace the comfort and convenience of apartment living in this wonderful seaside location.

Minimum Term: 6 Months  
Deposit: £1200.00  
Council Tax: Band: D



## Hallway

Entrance door, wooden floor, wall heater

## Open Plan Lounge Kitchen

Double glazed french doors with juliet balcony, electric wall heater, carpet to lounge area, wood flooring to kitchen area, kitchen comprises of a range of fitted base and wall units with integrated appliances include electric cooker and grill, hob, extractor hood, fridge freezer, washing machine, and freestanding dishwasher.

## Bedroom 1

Double glazed window, electric wall heater, carpet

## Ensuite to Bedroom 1

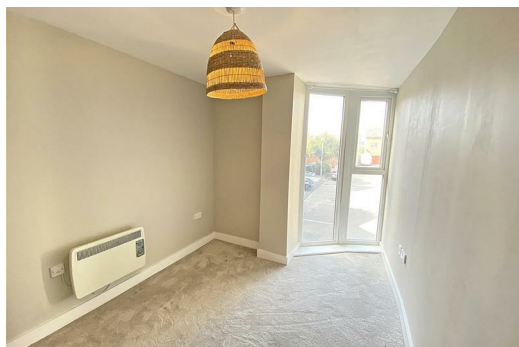
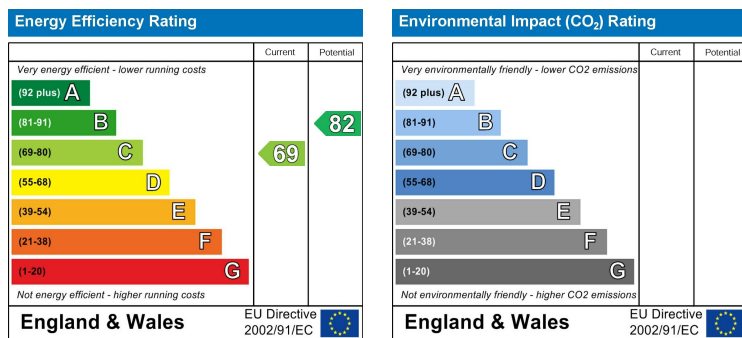
Part tiled walls and flooring, electric towel rail, low level w.c. pedestal wash basin, walk in shower cubical with combination shower, mirrored cabinet

## Bedroom 2

Double glazed window, electric wall heater, carpet

## Bathroom

Part tiled walls and flooring, low level w.c. pedestal wash basin and bath with mixer taps



Berkeley Shaw Estate Agents Limited.  
Company No. 0784754

Berkeley Shaw Real Estate Limited.  
Company No. 05206927

