



Justine Mansions, 4 Riding Street, Liverpool, Merseyside L3 5NP

£725 PCM

Berkeley Shaw are delighted to offer this one bedroom PART FURNISHED apartment. This development located close to the busy shopping area of London Road is convenient for the University, Royal Liverpool Hospital and Lime Street station.

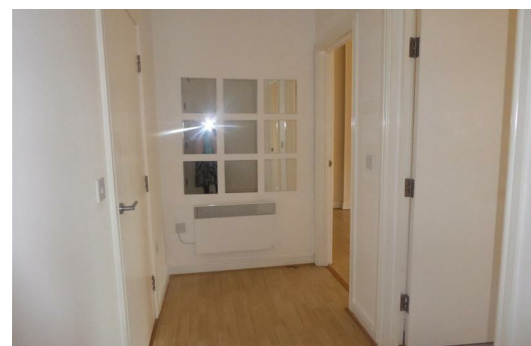
The well planned accommodation includes a security entrance door, hallway, Open plan Lounge / Kitchen with Juliet Balcony, office, main bedroom and bathroom with Shower over.

There is no parking with this apartment.

Council Tax: Band A

Deposit: £725

Lease Length: 6 months



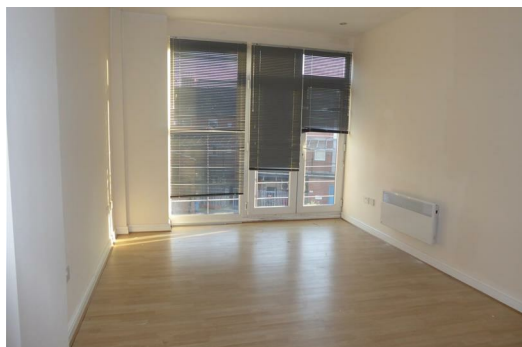
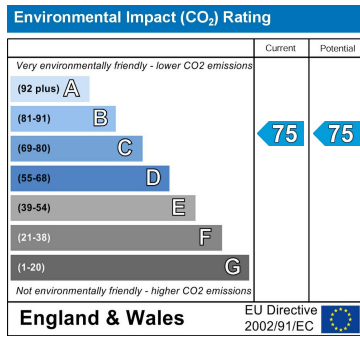
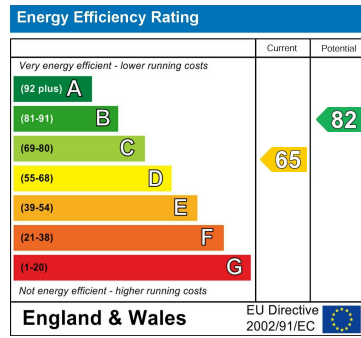
Hallway

Open Plan Lounge / Kitchen

Office

Bedroom

Bathroom



Berkeley Shaw Estate Agents Limited.
Company No. 0784754

Berkeley Shaw Real Estate Limited.
Company No. 05206927

