



16 Hereford Road, Liverpool, L21 1EQ

£130,000

Check out this spacious two bedroom terrace located in the heart of Seaforth!

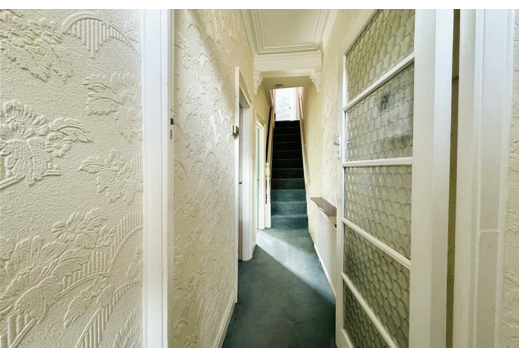
If you are looking to take your first steps onto the property ladder, or you are a landlord looking for an investment opportunity, this two bedroom mid terrace offered for sale by Berkeley Shaw Real Estate, could be the property for you.

Located in the popular postcode of L21, the surrounding area boasts excellent amenities with a strong transport infrastructure making this an ideal buy for commuters.

Set out across two floors, the accommodation briefly comprises; entrance hall, bay fronted living room, rear dining room, fitted kitchen & utility area. Rising to the first floor, the landing provides access to two double bedrooms and generous bathroom. Externally, the property boasts a front garden with gated access & a generous rear yard with out building.

Further benefits to the property include majority double glazing, gas central heating and no onward chain.

Get in touch straight away to arrange a viewing!

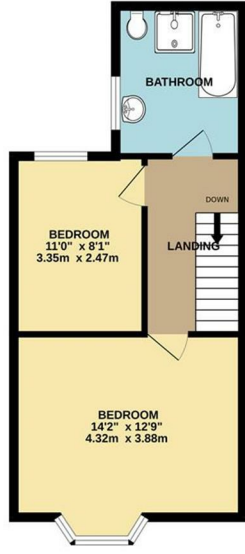
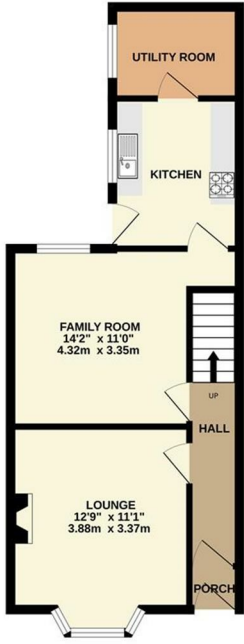


Energy Efficiency Rating		Current	Potential
Very energy efficient - lower running costs			
(92 plus) A			85
(81-91) B			
(69-80) C			
(55-68) D			
(39-54) E			
(21-38) F			
(1-20) G			
Not energy efficient - higher running costs			
England & Wales		EU Directive 2002/91/EC	

Environmental Impact (CO ₂) Rating		Current	Potential
Very environmentally friendly - lower CO ₂ emissions			
(92 plus) A			
(81-91) B			
(69-80) C			
(55-68) D			
(39-54) E			
(21-38) F			
(1-20) G			
Not environmentally friendly - higher CO ₂ emissions			
England & Wales		EU Directive 2002/91/EC	

GROUND FLOOR

1ST FLOOR



Whilst every attempt has been made to ensure the accuracy of the floorplan contained here, measurements of doors, windows, rooms and any other items are approximate and no responsibility is taken for any error, omission or mis-statement. This plan is for illustrative purposes only and should be used as such for any prospective purchaser. The services, systems and appliances shown have not been tested and no guarantee as to their operability or efficiency can be given. Made with Metropix C2024



Berkeley Shaw Estate Agents Limited.
Company No. 0784754

Berkeley Shaw Real Estate Limited.
Company No. 05206927

