



## City Quay Ellerman Road, Liverpool, Merseyside L3 4FH

**£149,000**

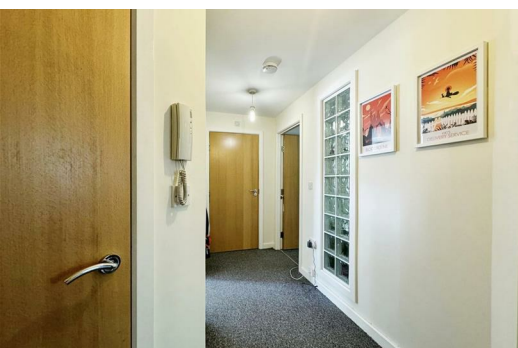
Are you looking to take your first step onto the property ladder or are you searching for an ideal buy to let opportunity?

Situated five minutes from the city center and just two minutes from Brunswick railway station, the location is perfect for professionals and the property itself forms part of an exclusive secure development which has allocated parking & further guest parking.

Accessed via the communal hallway with stair access, the 3rd floor apartment comprises; inviting entrance hall with storage cupboard, spacious kitchen/living room ideal for entertaining guests, two double bedrooms and a modern three piece bathroom.

The apartment benefits include car parking, video entry phone, electronic gates & no onward chain

Viewing at the earliest opportunity is recommended.



## Hallway

Carpet, door entry, walk in storage cupboard

## Lounge Kitchen

Double glazed windows, double radiator, carpet in lounge area, kitchen comprised of a range of fitted base and wall units with integrated appliances including fridge freezer, washing machine, electric oven, hob, extractor hood.

## Bedroom 1

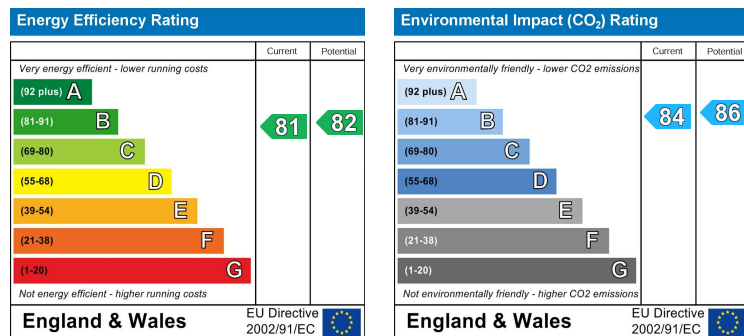
Double glazed windows, Radiators, carpet

## Bathroom

Fully tiled, panelled Pshaped bath with shower over, shower screen, vanity sink unit, low level w.c. mirror

## Bedroom 2

Double glazed windows, Radiators, carpet



Berkeley Shaw Estate Agents Limited.  
Company No. 0784754

Berkeley Shaw Real Estate Limited.  
Company No. 05206927

