



6 Park Terrace, Liverpool, L22 3XB

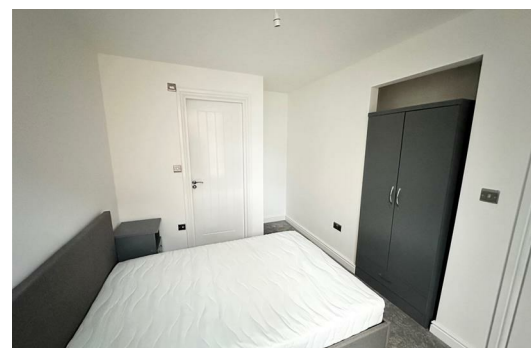
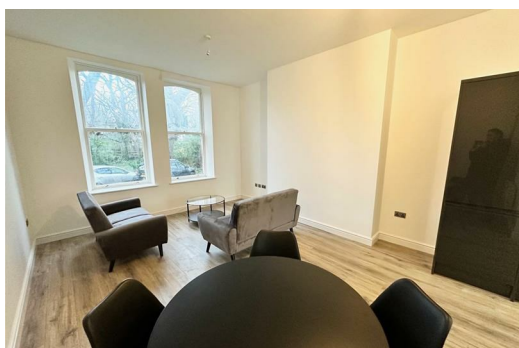
£1,045 PCM

Berkeley Shaw our please to offer TO LET GROUND FLOOR FURNISHED APARTMENT in Park Terrace. This apartment is within a character property in this highly sought after area of Waterloo. This Victorian Terrace consists of one and two bed apartments, benefitting from high ceilings and large windows flooding the rooms with natural light.

This GROUND FLOOR two bed apartment is offered furnished and the kitchen also includes integrated Electric Cooker and Hob. Two bedrooms one with ensuite w.c. Main shower room with electric shower, tenants will also have access to shared garden.

Early viewing is recommended to avoid missing out on this apartment.

Deposit: £1205
Council Tax Band: B
Minimum Tenancy: 12 months



Hallway

Entrance Door, laminate floor, carpet to stairs

Open Plan Kitchen Diner

Double glazed windows and PVC exterior door, laminate flooring , 2 x wall heaters, kitchen comprises of a range of fitted base and wall units 1/12 drainer sink with mixer taps, integrated oven and hob, extractor hood, fridge freezer, plumbing for washing machine

Shower Room

Fully tiled walls and floor , large walk in shower with glass screen and electric shower, low level w.c. sink towel rail

Landing

Carpet

Bedroom 1

Double glazed windows, electric wall heater and carpet

Ensuite W.C.

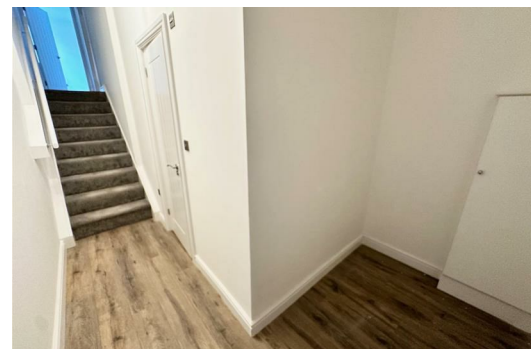
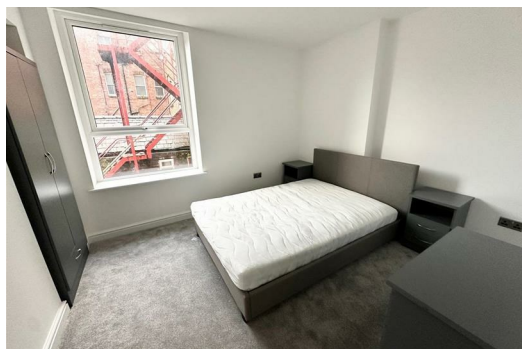
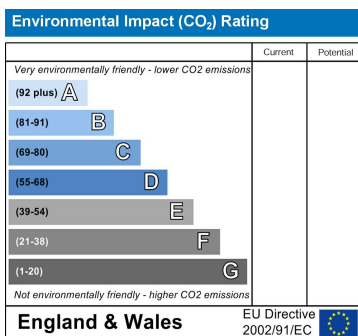
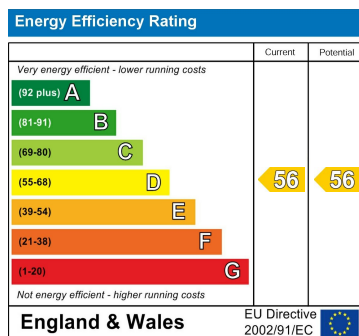
wood effect lino flooring, vanity sink unit low level w.c.

Bedroom 2

Double glazed window, electric wall heater and carpet

Communal Rear Garden

shared rear lawn



Berkeley Shaw Estate Agents Limited.
Company No. 0784754

Berkeley Shaw Real Estate Limited.
Company No. 05206927

