



3 St. Pauls Square, Liverpool, Merseyside L3 9RY

£1,000 PCM

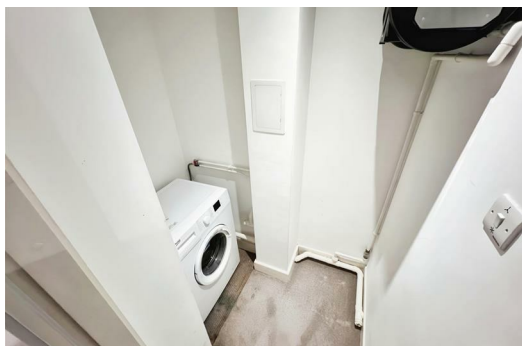
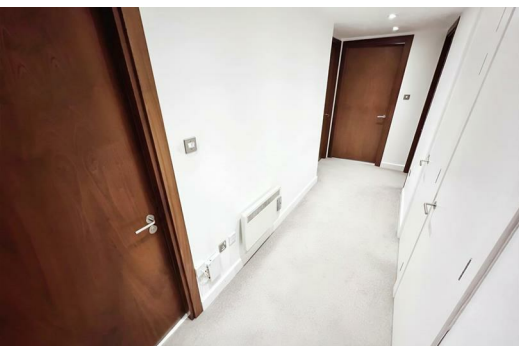
Welcome to this charming TWO BEDROOM FURNISHED apartment TO LET located in the heart of St. Pauls Square, Liverpool. This delightful property boasts a spacious reception room, perfect for entertaining guests or simply relaxing after a long day. With two cosy bedrooms and two modern bathrooms, this apartment offers comfort and convenience.

One of the highlights of this property is the lovely balcony, where you can enjoy your morning coffee or unwind in the evening while taking in the views of the bustling city below. Additionally, the availability of a parking space ensures that you never have to worry about finding a place to park your car.

The apartment features electric heating, keeping you warm and cosy during the colder months, and double glazed windows that not only provide insulation but also reduce outside noise, creating a peaceful living environment.

Whether you are looking for a stylish city pad or a convenient place to call home, this apartment in St. Pauls Square has it all. Don't miss out on the opportunity to make this wonderful property your own.

Council Tax Band: C
Minimum Term: 12 months
Deposit: £1000.00



Hallway

Entrance door, carpet, electric wall heater

Open Plan Lounge Kitchen

Double glazed patio doors, carpet, electric wall heater, kitchen area wooden flooring kitchen comprised of a range of fitted base and wall units with integrated fridge/ freezer, oven and hob, sink.

Bedroom 1

Double glazed window, carpet, electric wall heater

Ensuite Shower Room

Fully tiled shower room with wall in shower cubical, sink and w.c.

Bedroom 2

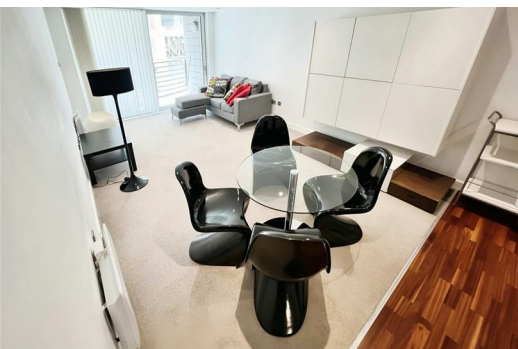
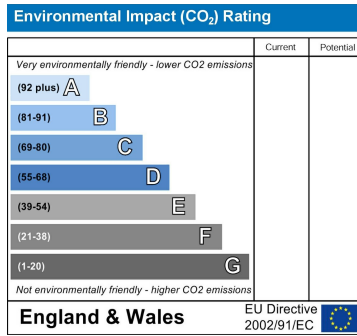
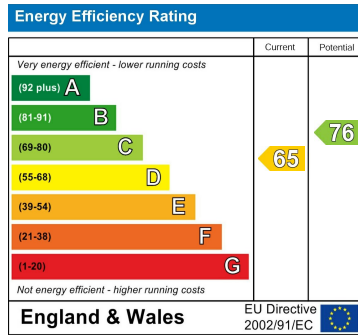
Double glazed window, carpet, electric wall heater

Bathroom

Fully tiled bathroom comprising of bath with shower over, sink and w.c.

Balcony off lounge

tiled, metal railings



Berkeley Shaw Estate Agents Limited.
Company No. 0784754

Berkeley Shaw Real Estate Limited.
Company No. 05206927

