



## Portside House, 29 Duke Street, Liverpool, L1 5AQ

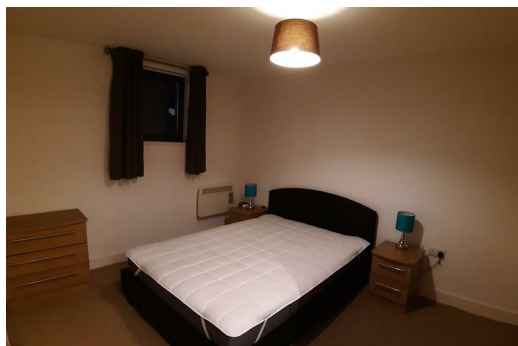
**£895 PCM**

Berkeley Shaw are pleased to offer to rent this FURNISHED One bedroom FURNISHED apartment in Portside House. located in the heart of Liverpool City Centre and just a two minute walk from the Liverpool One shopping complex. The accommodation briefly comprises; entrance hall, living/dining room fully fitted kitchen, two bedrooms and a main bathroom. No Parking with this apartment

Deposit: £895.00

Council Tax: Band B

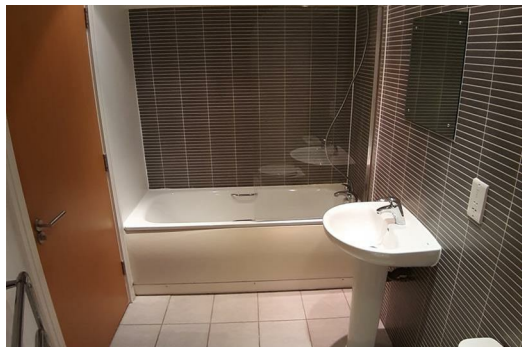
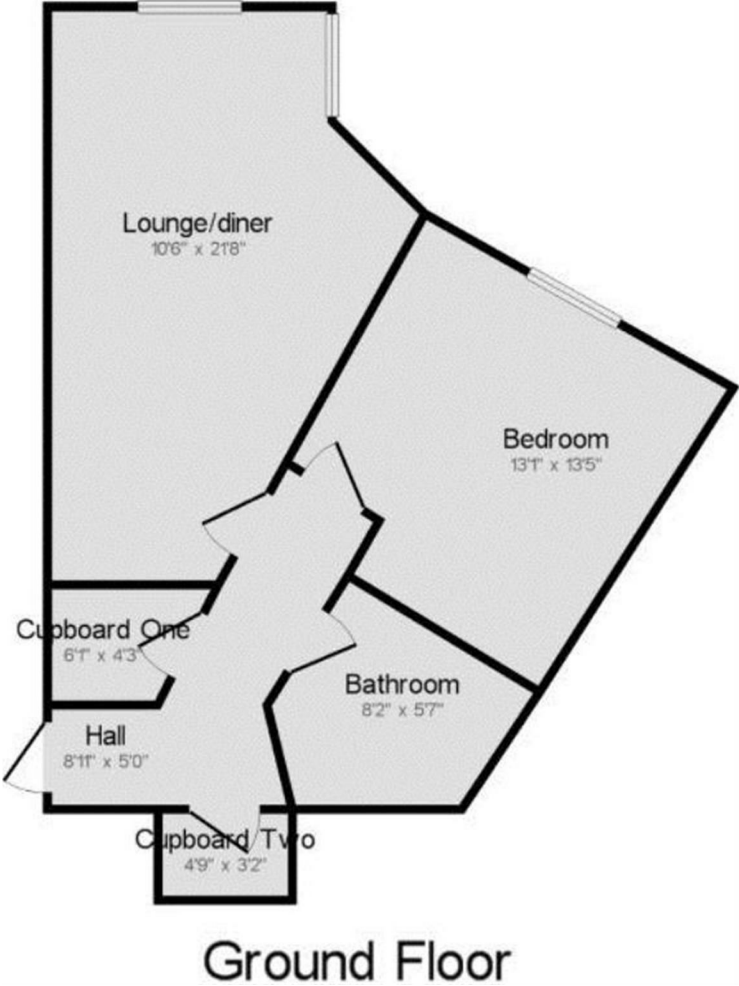
Minimum Term: 12 months





Energy Efficiency Rating		Current	Potential
Very energy efficient - lower running costs			
(92 plus) A			86
(81-91) B			
(69-80) C			
(55-68) D			
(39-54) E			
(21-38) F			
(1-20) G			
Not energy efficient - higher running costs			
England & Wales		EU Directive 2002/91/EC	

Environmental Impact (CO <sub>2</sub> ) Rating		Current	Potential
Very environmentally friendly - lower CO <sub>2</sub> emissions			
(92 plus) A			77
(81-91) B			
(69-80) C			
(55-68) D			
(39-54) E			
(21-38) F			
(1-20) G			
Not environmentally friendly - higher CO <sub>2</sub> emissions			
England & Wales		EU Directive 2002/91/EC	



Berkeley Shaw Estate Agents Limited.  
Company No. 0784754

Berkeley Shaw Real Estate Limited.  
Company No. 05206927

