



## 270 Finch Lane, Liverpool, L14 4AG

Asking Price £100,000

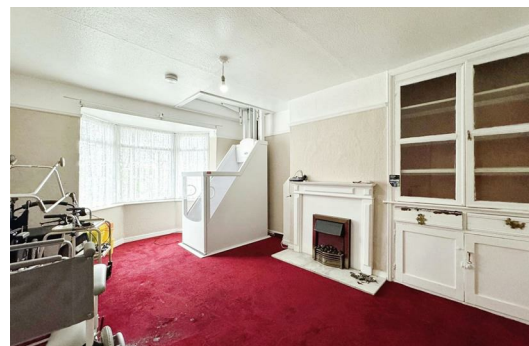
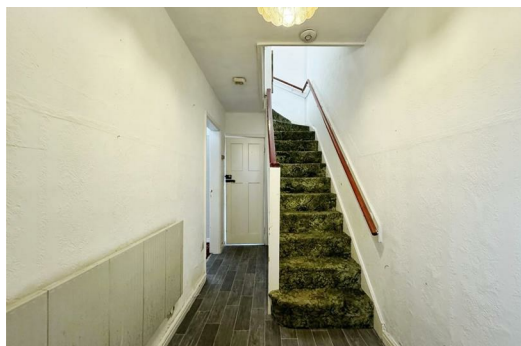
Are you searching for an ideal investment opportunity or a home you can put your own stamp on?

Berkeley Shaw Real Estate is delighted to bring to the sales market this three-bedroom mid-terrace located on Finch Lane L14. Knotty Ash offers a wide range of amenities adding to the desirability for buyers. There is a range of schools making this an ideal buy for families.

Set out across two floors, the accommodation briefly comprises; spacious entrance hall, bay fronted living room, rear kitchen with pantry, inner hall with access to the WC. Rising to the first floor, the landing provides access to three double bedrooms and a wet room with shower. Externally, the property offers a walled front garden and good-sized rear garden with patio area & pond. Further benefits to the property include no onward chain, solar panels & part double glazing.

Viewing is strong encouraged.

The solar panels are held under a 25 year lease running from 28th November 2011



## Entrance hall

Radiator & stairs to upper floor.

## Living room

Double glazed windows to bay, radiator & electric fire.

## Kitchen

Base unit with stainless steel sink, single glazed window, radiator & pantry.

## Inner hall

UPVC door to garden.

## WC

Single glazed window & WC.

## Landing

Loft access.

## Bedroom 1

Double glazed window & radiator.

## Bedroom 2

Single glazed window & radiator.

## Bedroom 3

Double glazed window & radiator.

## Wet room

Basin, WC, single glazed window, part tiled walls & electric shower.

## Externally

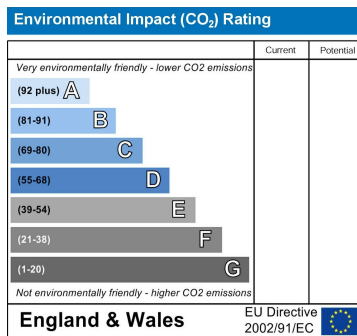
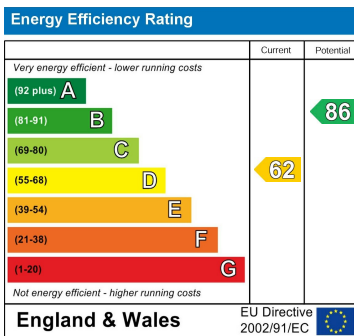
Walled & gated front garden. Paved rear garden with pond area.

GROUND FLOOR

1ST FLOOR



Whilst every attempt has been made to ensure the accuracy of the floorplans contained here, measurements of floor, window, rooms and any other items are approximate and no responsibility is taken for any error, omission or mis-statement. This plan is the legal document and any other drawings are used as guides only. Prospective purchasers: The terms, systems and appliances shown here have not been tested and no guarantee as to their operability or efficiency can be given. Made with MetrePro CS2014



Berkeley Shaw Estate Agents Limited.  
Company No. 0784754

Berkeley Shaw Real Estate Limited.  
Company No. 05206927

