



52 Craydon Road, Bristol
£239,950



52 Craydon Road

Bristol, Bristol

Council Tax band: B

Tenure: Freehold

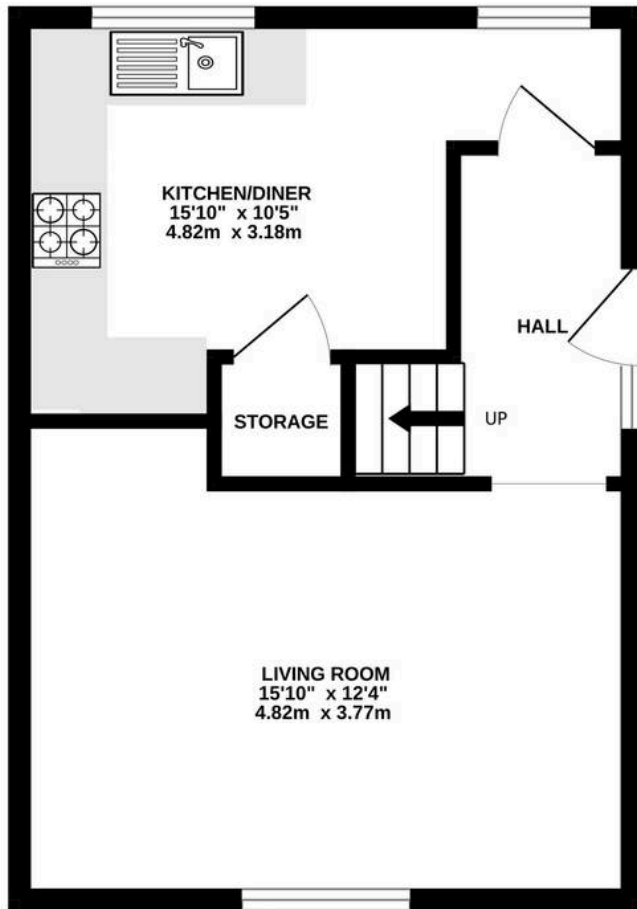
EPC Energy Efficiency Rating: C

EPC Environmental Impact Rating: C

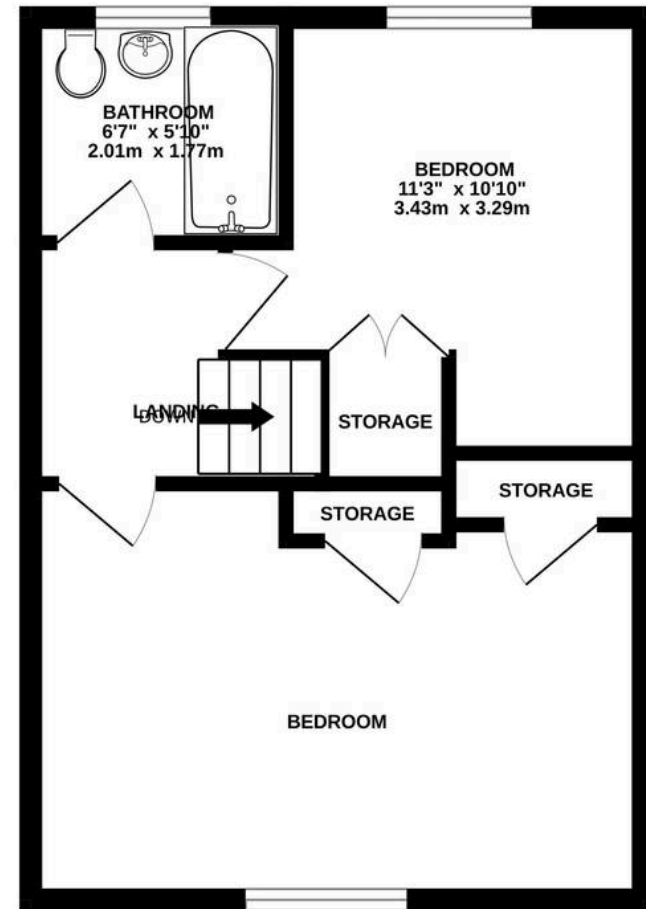
- End of terrace position with two bedrooms
- Spacious private garden
- Off-road parking
- Modern kitchen with integrated appliances
- Modern bathroom with contemporary fixtures
- Bright open-plan living area
- Family-friendly garden



GROUND FLOOR
361 sq.ft. (33.5 sq.m.) approx.



1ST FLOOR
361 sq.ft. (33.5 sq.m.) approx.



TOTAL FLOOR AREA : 721 sq.ft. (67.0 sq.m.) approx.

Whilst every attempt has been made to ensure the accuracy of the floorplan contained here, measurements of doors, windows, rooms and any other items are approximate and no responsibility is taken for any error, omission or mis-statement. This plan is for illustrative purposes only and should be used as such by any prospective purchaser. The services, systems and appliances shown have not been tested and no guarantee as to their operability or efficiency can be given.

Made with Metropix ©2025