



7 Parkfield Avenue, Bristol
£360,000



7 Parkfield Avenue

Bristol, Bristol

Recently refurbished, charming 2-bed Victorian terrace blends period character with modern style. Features bright reception rooms, contemporary kitchen, modern bathroom, south-facing garden, and more. Ideal for first-time buyers.

Council Tax band: B

Tenure: Freehold

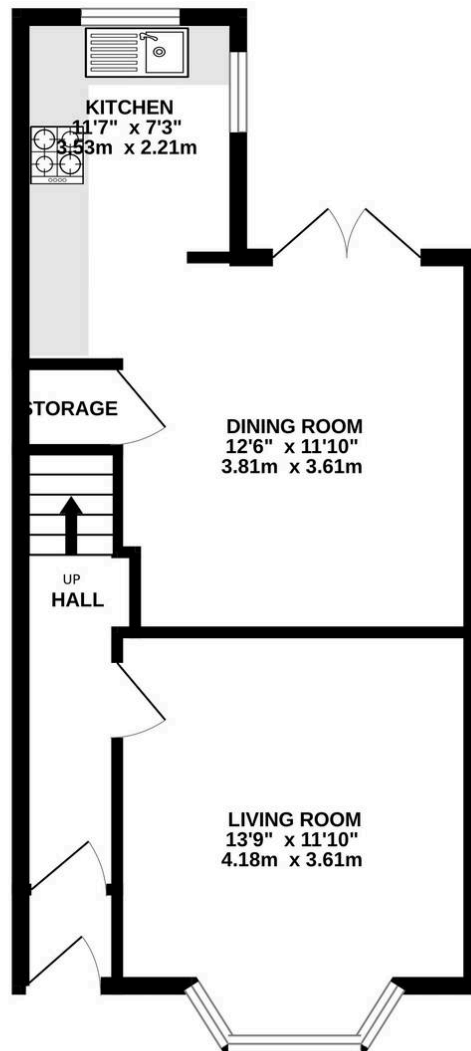
EPC Energy Efficiency Rating: D

EPC Environmental Impact Rating: D

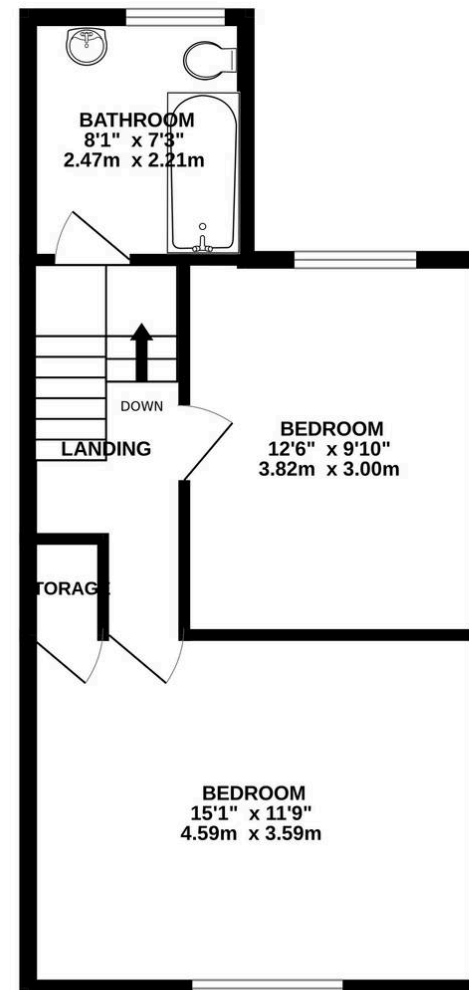
- Victorian terrace with two bedrooms
- French doors (garden access)
- South facing garden with lawn
- Private enclosed garden
- Modern kitchen with integrated appliances
- Marble-effect countertops
- Decorative fireplaces



GROUND FLOOR
435 sq.ft. (40.4 sq.m.) approx.



1ST FLOOR
425 sq.ft. (39.4 sq.m.) approx.



TOTAL FLOOR AREA : 860 sq.ft. (79.9 sq.m.) approx.

Whilst every attempt has been made to ensure the accuracy of the floorplan contained here, measurements of doors, windows, rooms and any other items are approximate and no responsibility is taken for any error, omission or mis-statement. This plan is for illustrative purposes only and should be used as such by any prospective purchaser. The services, systems and appliances shown have not been tested and no guarantee as to their operability or efficiency can be given.
Made with Metropix ©2025