

£270,000
24 Solent Court
Stubbington, PO14 2UA

PROPERTY SUMMARY

Offered for sale with no onward chain, this delightful two-bedroom ground floor flat is located in Solent Court, ideally situated between Stubbington Village and Hill Head Beach. The property benefits from its own private entrance and features two spacious double bedrooms, both with built-in wardrobes. The master bedroom boasts an en-suite bathroom for added convenience. The kitchen provides plenty of storage, while the bright living area has double doors onto the communal garden, offering a pleasant outdoor space. Additional benefits include allocated, undercover parking and potential to further improve and adapt. In our opinion, this delightful home is presented to a high standard throughout. To secure your viewing, please contact our Stubbington office today.

2 

2 

1 





HALLWAY

LOUNGE 14' 3" x 12' 8" (4.34m x 3.86m)

KITCHEN 10' 5" x 6' 1" (3.18m x 1.85m)

MASTER BEDROOM 16' 2" x 8' 6" (4.93m x 2.59m)

ENSUITE 6' 3" x 5' 3" (1.91m x 1.6m)

BEDROOM TWO 10' 4" x 8' 1" (3.15m x 2.46m)

BATHROOM 8' 6" x 5' 5" (2.59m x 1.65m)

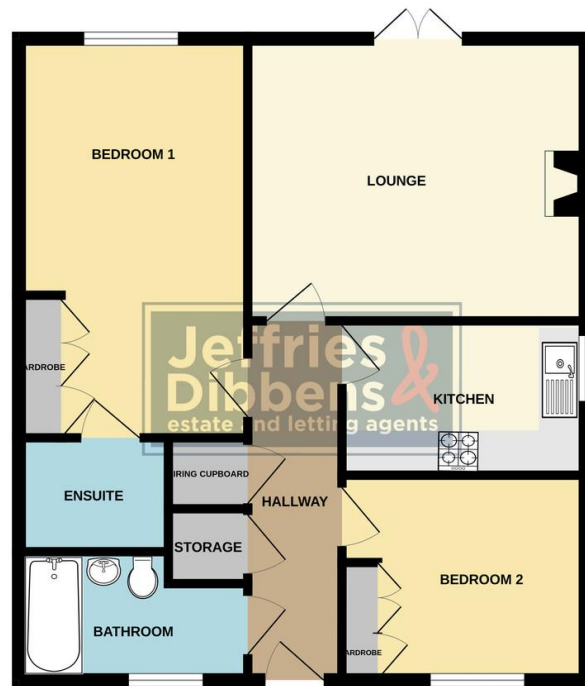
OUTSIDE

ALLOCATED PARKING

COMMUNAL GARDENS



GROUND FLOOR



Whilst every attempt has been made to ensure the accuracy of the floorplan contained here, measurements of doors, windows, rooms and any other items are approximate and no responsibility is taken for any error, omission or mis-statement. This plan is for illustrative purposes only and should be used as such by any prospective purchaser. The services, systems and appliances shown have not been tested and no guarantee as to their operability or efficiency can be given.
Made with Metropix (2025)

LOCAL AUTHORITY
Fareham Borough Council

TENURE
Leasehold

COUNCIL TAX BAND
Band C

VIEWINGS
By prior appointment only

Score	Energy rating	Current	Potential
92+	A		
81-91	B		
69-80	C		77 C
55-68	D	64 D	
39-54	E		
21-38	F		
1-20	G		

Agents Note: Whilst every care has been taken to prepare these particulars, they are for guidance purposes only. All measurements are approximate and are for general guidance purposes only and whilst every care has been taken to ensure their accuracy, they should not be relied upon and potential buyers/tenants are advised to recheck the measurements

**Jeffries
Dibbens**
estate and letting agents

OFFICE ADDRESS
18 The Green, Stubbington,
Fareham, Hampshire, PO14 2JG

CONTACT
01329 668 511
stubbington@dibbensproperty.co.uk
www.jdea.co.uk