

**£465,000**  
**3 Mayflower Close**  
Stubbington, PO14 2PZ



## PROPERTY SUMMARY

We are pleased to present this immaculate three-bedroom detached home, offered with no forward chain, and located in a quiet cul-de-sac on Mayflower Close—perfectly positioned between the charming Stubbington Village and the scenic Hill Head beach. The property features a spacious lounge with doors that open onto a private, south-west facing garden—ideal for relaxing or entertaining. The generously sized kitchen/diner provides ample space for family meals, and a modern downstairs shower room adds convenience. Upstairs, you'll find three bedrooms and a family bathroom. Additional benefits include a private driveway with parking for two vehicles. Homes in this desirable location are rarely available, so contact our Stubbington Office today to arrange your viewing and avoid missing out.

3 

2 

1 





## **HALLWAY**

**LOUNGE** 17' 11" x 12' 8" (5.46m x 3.86m)

**KITCHEN/DINER** 19' 11" x 17' 9" (6.07m x 5.41m)

## **SHOWER ROOM**

## **LANDING**

**BEDROOM ONE** 12' 9" x 10' 10" (3.89m x 3.3m)

**BEDROOM TWO** 10' x 9' 7" (3.05m x 2.92m)

**BEDROOM THREE** 9' 6" x 6' 11" (2.9m x 2.11m)

## **BATHROOM**

## **OUTSIDE**

## **REAR GARDEN**

## **LEAN TO STORAGE**

## **DRIVEWAY**

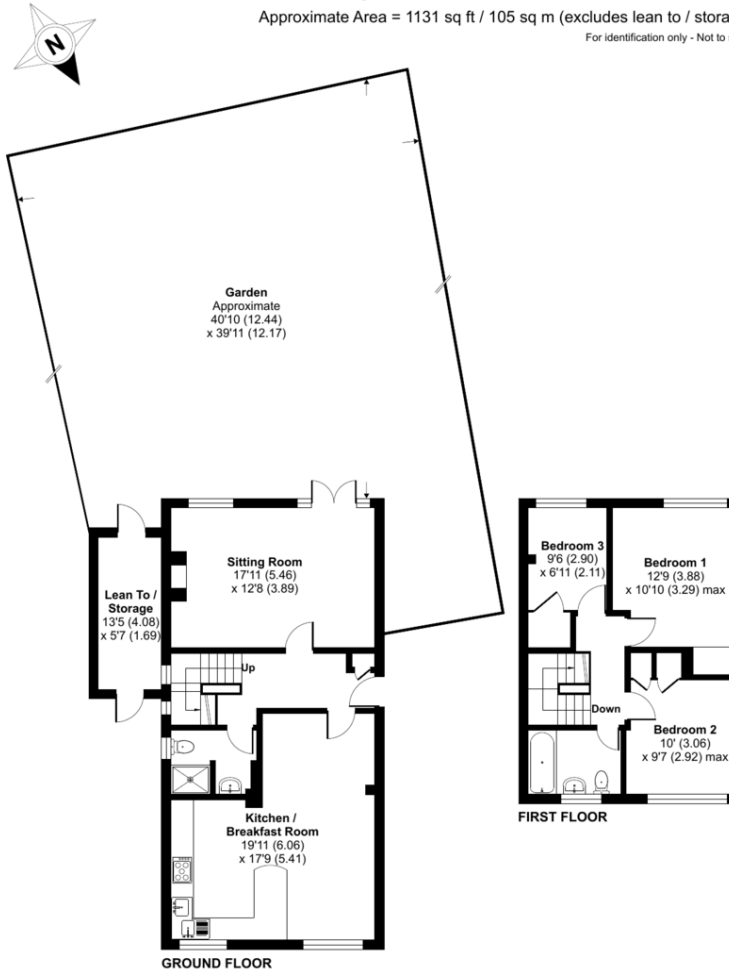




## Mayflower Close, Fareham, PO14

Approximate Area = 1131 sq ft / 105 sq m (excludes lean to / storage)

For identification only - Not to scale



Floor plan produced in accordance with RICS Property Measurement 2nd Edition, Incorporating International Property Measurement Standards (IPMS2 Residential). © nichcom 2025. Produced for Flyp Homes Limited. REF: 1276747

**LOCAL AUTHORITY**  
Fareham Borough Council

**TENURE**  
Freehold

**COUNCIL TAX BAND**  
Band D

**VIEWINGS**  
By prior appointment only

Score	Energy rating	Current	Potential
92+	A		
81-91	B		
69-80	C	72 C	84 B
55-68	D		
39-54	E		
21-38	F		
1-20	G		

Agents Note: Whilst every care has been taken to prepare these particulars, they are for guidance purposes only. All measurements are approximate and are for general guidance purposes only and whilst every care has been taken to ensure their accuracy, they should not be relied upon and potential buyers/tenants are advised to recheck the measurements

**Jeffries  
Dibbens &**  
estate and letting agents

### OFFICE ADDRESS

18 The Green, Stubbington,  
Fareham, Hampshire, PO14 2JG

### CONTACT

01329 668 511  
stubbington@dibbensproperty.co.uk  
www.jdea.co.uk