

Guide Price £250,000 to £265,000

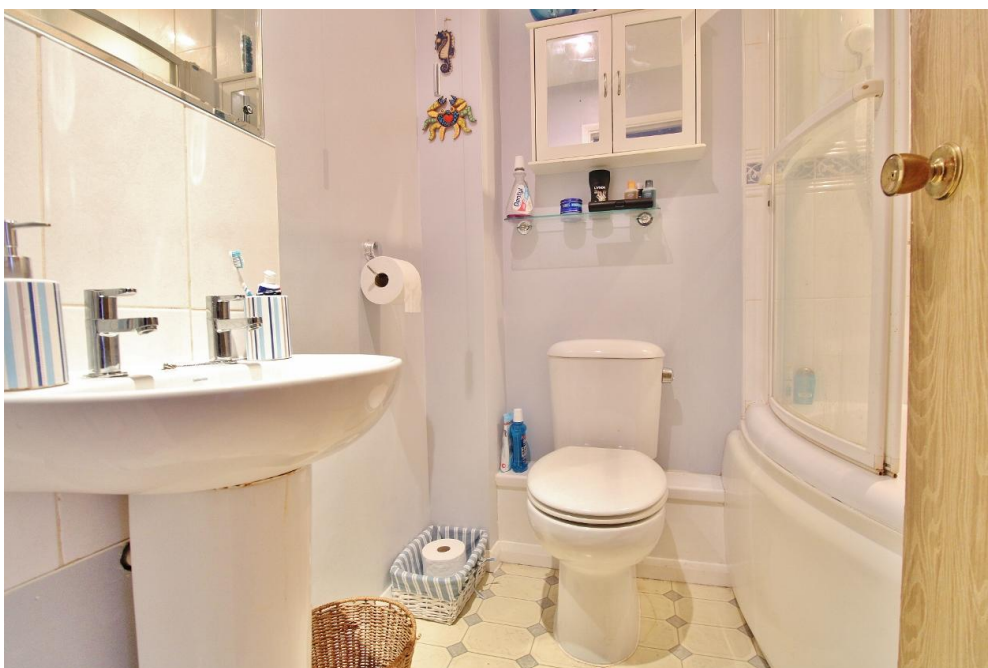
32 Woodrush Crescent

Locks Heath, SO31 6UP

PROPERTY SUMMARY

This two bedroom terraced house is situated in a quiet cul-de-sac in Locks Heath, close to local amenities, Priory Park and within good school catchments. From the porch, you enter into the open plan lounge/diner/kitchen which has dual aspect windows, a patio door onto the rear garden and fitted units and worktops. Upstairs, there are two double bedrooms, both with built in storage, and a three piece bathroom with a large corner bathtub. Further benefits include the landscaped front and rear gardens, ideal for hosting family and friends in the summer, as well as two allocated parking spaces. An ideal first home or investment, this property is not to be missed so call us now to book in your viewing!





ENTRANCE PORCH

LOUNGE/DINER 15' 10" x 11' 8" (4.83m x 3.56m)

KITCHEN 11' 8" x 8' 3" (3.56m x 2.51m)

FIRST FLOOR LANDING

MASTER BEDROOM 11' 8" x 9' 6" (3.56m x 2.9m)

BATHROOM

BEDROOM 2 11' 8" x 7' 10" (3.56m x 2.39m)

OUTSIDE

FRONT GARDEN

2 X ALLOCATED PARKING SPACES

REAR GARDEN

GROUND FLOOR

1ST FLOOR



Whilst every attempt has been made to ensure the accuracy of the floorplan contained here, measurements of doors, windows, rooms and any other items are approximate and no responsibility is taken for any error, omission or mis-statement. This plan is for illustrative purposes only and should be used as such by any prospective purchaser. The services, systems and appliances shown have not been tested and no guarantee as to their operability or efficiency can be given.
Made with Metropix ©2024

LOCAL AUTHORITY
Fareham Borough Council

TENURE
Freehold

COUNCIL TAX BAND
Band B

VIEWINGS
By prior appointment only

EPC TO FOLLOW

Agents Note: Whilst every care has been taken to prepare these particulars, they are for guidance purposes only. All measurements are approximate and are for general guidance purposes only and whilst every care has been taken to ensure their accuracy, they should not be relied upon and potential buyers/tenants are advised to recheck the measurements

**Jeffries
Dibbens &**
estate and letting agents

OFFICE ADDRESS

18 The Green, Stubbington,
Fareham, Hampshire, PO14 2JG

CONTACT

01329 668 511
stubbington@dibbensproperty.co.uk
www.jdea.co.uk