

LIVERMORES

THE ESTATE AGENTS

2 Bedrooms

Bungalow - Semi Detached

By Auction

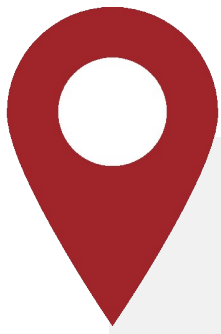
£275,000

Located in

Dartford



www.livermores.co.uk



33 Sundridge Close

Dartford DA1 1XD



GUIDE PRICE £275,000 - £280,000

TO BE SOLD BY PUBLIC AUCTION THURSDAY 30th OCTOBER 2025.

Acting as joint auctioneer with Clive Emson Auctioneers we are delighted to offer this
TWO BEDROOM SEMI-DETACHED BUNGALOW.

To book a viewing please visit Clive Emson's website.



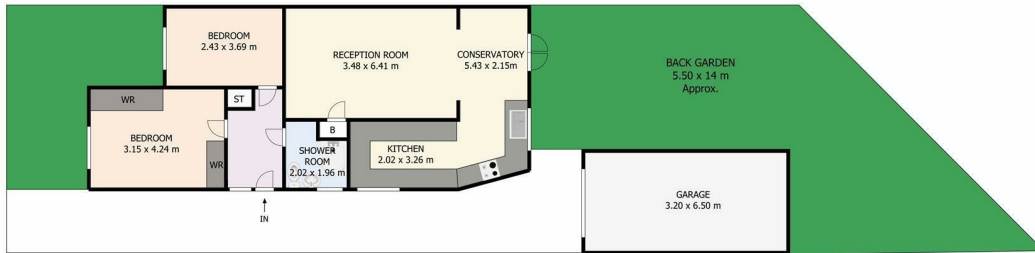
33 Sundridge Close

£275,000 Freehold



- GUIDE PRICE £275,000 - £280,000
- CHAIN FREE!
- CONTACT US FOR VIEWING DATES
- LARGE CONSERVATORY
- PLEASE VISIT CLIVE EMSONS WEBSITE
- TO BE SOLD BY PUBLIC AUCTION
THURSDAY 30 OCTOBER 2025
- CLOSE PROXIMITY TO DARTFORD TOWN
CENTRE & STATION
- OFF-STREET PARKING AND GARAGE
- SPACIOUS LOUNGE AREA
- COUNCIL TAX BAND 'D', EPC RATING 'D'





Ground Floor

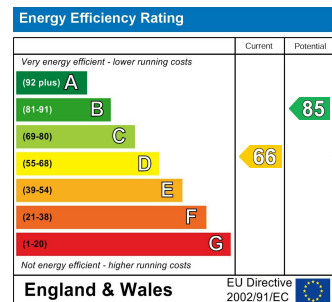
Sundridge Close Dartford DA1 1XD

This plan serves solely as a layout guide, and no liability is assumed for errors, omissions, or inaccuracies. It was developed in accordance with the RICS Code of Measuring Practice. All dimensions, including windows, doors, and the Total Gross Internal Area (GIA), are estimated and measured internally. For accurate measurements, please consult a certified architect or surveyor prior to making any decisions based on this plan.

Council Tax Band D

Local Authority DARTFORD

Agents Note: Whilst every care has been taken to prepare these particulars, they are for guidance purposes only. All measurements are approximate and are for general guidance purposes only and whilst every care has been taken to ensure their accuracy, they should not be relied upon and potential buyers/tenants are advised to recheck the measurements.



1 Hythe Street

Dartford

Kent

DA1 1BE

LIVERMORES
THE ESTATE AGENTS

dartford@livermores.co.uk

01322 228090

www.livermores.co.uk