



LIVERMORES

LIVERMORES
THE ESTATE AGENTS

2 Bedrooms

Flat

Located in Greenhithe

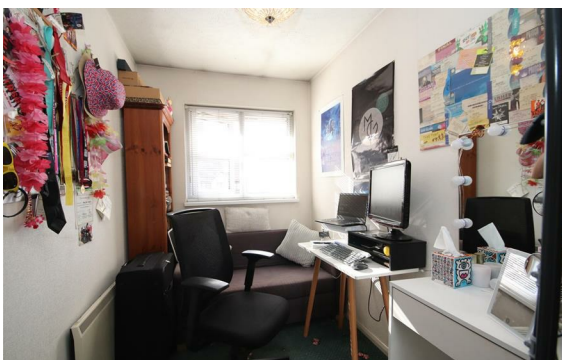
£200,000



dartford@livermores.co.uk

www.livermores.co.uk

01322 228090



Offers in the Region of £200,000.... This 2 bedroom property is located on the first floor of this popular development. The property comprises, good size lounge, 2 bedrooms the master has a small dressing area with hand basin, a fitted kitchen and 3 piece bathroom suite and is offered to the market with no chain. The property is ideally located for Stone Crossing station, and is a short journey to Bluewater with it's vast array of bars and restaurants as well as it's excellent shopping facilities. Although requiring some updating the property has double glazing and comes with an allocated parking space. VIEWING RECOMMENDED

Energy Efficiency Rating: C

Agents Note: Whilst every care has been taken to prepare these particulars, they are for guidance purposes only. All measurements are approximate and are for general guidance purposes only and whilst every care has been taken to ensure their accuracy, they should not be relied upon and potential buyers/tenants are advised to recheck the measurements.

LIVERMORES
THE ESTATE AGENTS

1 Hythe Street
Dartford
Kent
DA1 1BE

01322 228090

dartford@livermores.co.uk

www.livermores.co.uk