



1 Bedrooms

Apartment

Located in Greenhithe

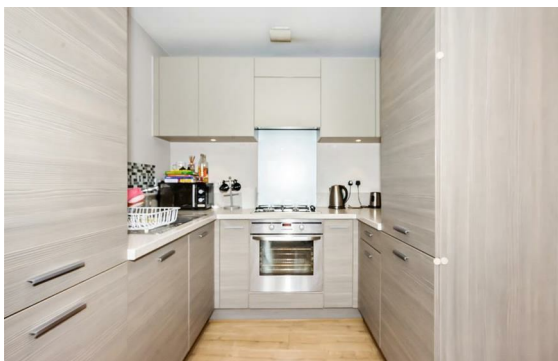
£1,300



lettings@livermores.co.uk

www.livermores.co.uk

01322 311427



Livermores is delighted to present this modern and spacious one-bedroom top floor apartment located on Waterstone Way, within the desirable Shearwater Court in Greenhithe. This charming property boasts a bright and airy atmosphere, making it an ideal home for individuals or couples seeking comfort and convenience.

Upon entering, you will find a well-designed reception room that offers ample space for relaxation and entertaining. The contemporary kitchen is equipped with integrated appliances, ensuring that you have everything you need for your culinary endeavours. The apartment features a well-appointed bedroom, providing a peaceful retreat at the end of the day, along with a stylish bathroom that meets all your needs.

One of the standout features of this property is the large balcony with great views and the allocated parking, which adds to the convenience of living in this vibrant area. The apartment is situated close to a variety of amenities, including shops, restaurants, and recreational facilities, making it easy to enjoy the local lifestyle. Additionally,

Energy Efficiency Rating:

Agents Note: Whilst every care has been taken to prepare these particulars, they are for guidance purposes only. All measurements are approximate and are for general guidance purposes only and whilst every care has been taken to ensure their accuracy, they should not be relied upon and potential buyers/tenants are advised to recheck the measurements.

LIVERMORES
THE ESTATE AGENTS

1 Hythe Street
Dartford
Kent
DA1 1BE

01322 311427

lettings@livermores.co.uk

www.livermores.co.uk