



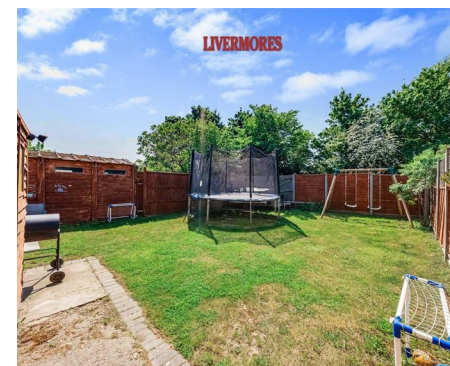
**LIVERMORES**  
THE ESTATE AGENTS

2 Bedrooms

Maisonette

Located in Dartford

£250,000

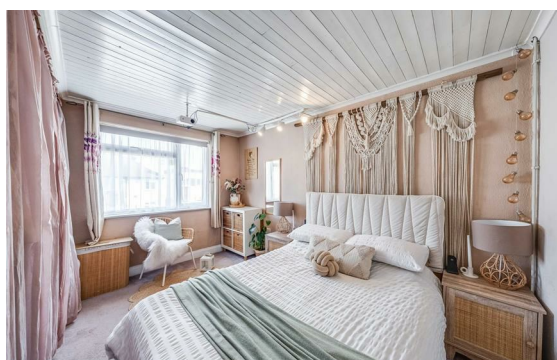
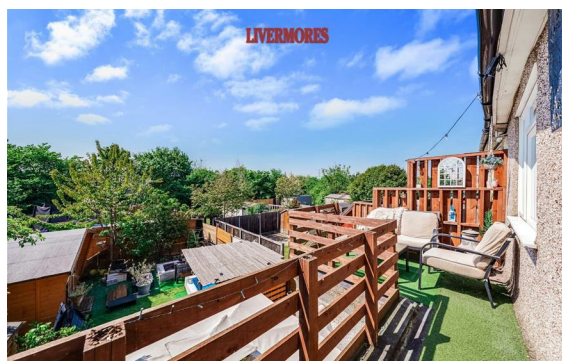


[dartford@livermores.co.uk](mailto:dartford@livermores.co.uk)

[www.livermores.co.uk](http://www.livermores.co.uk)

01322 228090





GUIDE PRICE £250,000 - £275,000... Nestled in the desirable Burnham Crescent, Dartford, this exceptional two-bedroom top-floor maisonette presents a rare opportunity for discerning buyers. With its prime location, you will find yourself within a mile of Dartford Train Station, local shops, and the A2, ensuring convenience for both commuting and daily errands.

This maisonette boasts two generous reception rooms, providing ample space for relaxation and entertaining. The well-appointed kitchen and bathroom complement the spacious living accommodation, making it ideal for both families and professionals alike. The property benefits from a long lease of 177 years and minimal annual service charges.

One of the standout features of this home is the large private rear garden, perfect for outdoor gatherings or simply enjoying a quiet moment in nature. Additionally, the outside roof terrace offers a unique space to unwind while taking in the surrounding views.

## Energy Efficiency Rating: D

Agents Note: Whilst every care has been taken to prepare these particulars, they are for guidance purposes only. All measurements are approximate and are for general guidance purposes only and whilst every care has been taken to ensure their accuracy, they should not be relied upon and potential buyers/tenants are advised to recheck the measurements.

**LIVERMORES**  
THE ESTATE AGENTS

1 Hythe Street  
Dartford  
Kent  
DA1 1BE

01322 228090

[dartford@livermores.co.uk](mailto:dartford@livermores.co.uk)

[www.livermores.co.uk](http://www.livermores.co.uk)