



**LIVERMORES**  
THE ESTATE AGENTS

2 Bedrooms

Flat

Located in Dartford

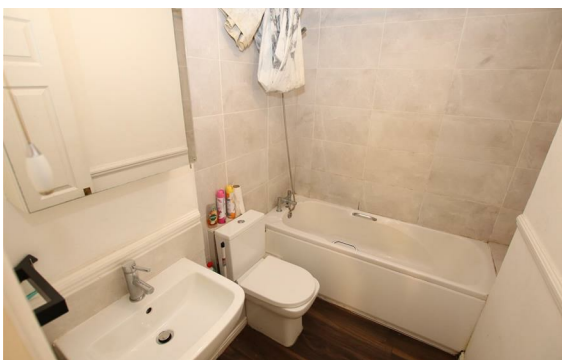
£1,300



[lettings@livermores.co.uk](mailto:lettings@livermores.co.uk)

[www.livermores.co.uk](http://www.livermores.co.uk)

01322 311427



Nestled in the desirable area of Grange Crescent, Berwick Court, Dartford, this charming ground floor flat offers a delightful living experience. With two generously sized double bedrooms, this property is perfect for couples, small families, or individuals seeking extra space. The flat boasts a bright and spacious reception room, providing an inviting atmosphere for relaxation and entertaining.

The well-appointed bathroom ensures convenience and comfort, while the allocated parking space adds to the practicality of this home. The location is particularly advantageous, as it is in close proximity to public transport links, making commuting and exploring the surrounding areas effortless.

Available from the 23rd of May 2025, this flat presents an excellent opportunity for those looking to settle in a vibrant community. With its appealing features and prime location, this property is sure to attract interest. Do not miss the chance to make this lovely flat your new home.

## Energy Efficiency Rating:

Agents Note: Whilst every care has been taken to prepare these particulars, they are for guidance purposes only. All measurements are approximate and are for general guidance purposes only and whilst every care has been taken to ensure their accuracy, they should not be relied upon and potential buyers/tenants are advised to recheck the measurements.

**LIVERMORES**  
THE ESTATE AGENTS

1 Hythe Street  
Dartford  
Kent  
DA1 1BE

01322 311427

[lettings@livermores.co.uk](mailto:lettings@livermores.co.uk)

[www.livermores.co.uk](http://www.livermores.co.uk)