



LIVERMORES
THE ESTATE AGENTS

2 Bedrooms

Flat

Located in Greenhithe

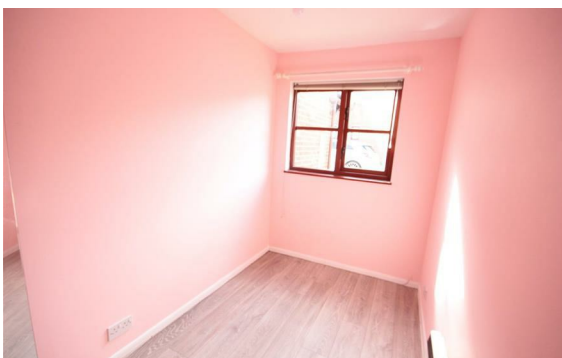
£1,350 PCM



lettings@livermores.co.uk

www.livermores.co.uk

01322 311427



Highly Recommended. 2 Bedroom ground floor flat situated on a very sought after development in walking distance of all local amenities, Station and Bluewater. The accommodation comprises Entrance Hall, spacious lounge/diner, fitted kitchen, one double and one single bedroom and bathroom. There is an allocated parking space with the property. EPC rating 'D'. Council tax band 'C'. SIMILAR PROPERTIES REQUIRED. AVAILABLE END OF APRIL 2025. DEPOSIT £1442.30

Energy Efficiency Rating:

Agents Note: Whilst every care has been taken to prepare these particulars, they are for guidance purposes only. All measurements are approximate and are for general guidance purposes only and whilst every care has been taken to ensure their accuracy, they should not be relied upon and potential buyers/tenants are advised to recheck the measurements.

LIVERMORES
THE ESTATE AGENTS

1 Hythe Street
Dartford
Kent
DA1 1BE

01322 311427

lettings@livermores.co.uk

www.livermores.co.uk