



**LIVERMORES**  
THE ESTATE AGENTS

2 Bedrooms

House - End Terrace

Located in Dartford

£350,000

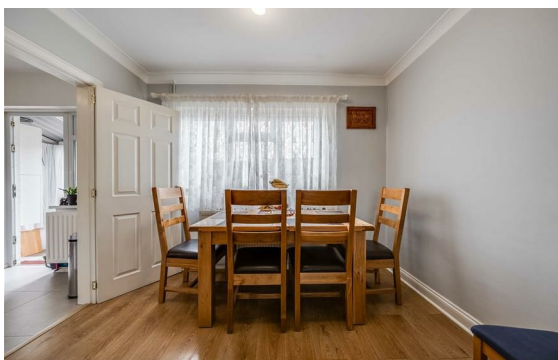


[dartford@livermores.co.uk](mailto:dartford@livermores.co.uk)

[www.livermores.co.uk](http://www.livermores.co.uk)

01322 228090





Nestled in the sought-after residential area of Bondfield Walk, Dartford, this charming end of terrace house presents an excellent opportunity for those seeking a comfortable and convenient lifestyle. Furthermore, the property spans 731 square feet and boasts a well-designed layout that includes a spacious reception room, two inviting bedrooms, and a family bathroom.

The modern kitchen is perfect for culinary enthusiasts, while the utility room adds an element of practicality to daily living. Externally, the property features a private garden complete with a patio area, ideal for outdoor dining and relaxation. Additionally, there are outbuildings that provide ample storage space, ensuring that your home remains clutter-free.

Parking is made easy with a designated space in the rear garden, complemented by a large garage that offers convenient access for vehicles. The location is particularly

## Energy Efficiency Rating: C

Agents Note: Whilst every care has been taken to prepare these particulars, they are for guidance purposes only. All measurements are approximate and are for general guidance purposes only and whilst every care has been taken to ensure their accuracy, they should not be relied upon and potential buyers/tenants are advised to recheck the measurements.

**LIVERMORES**  
THE ESTATE AGENTS

1 Hythe Street  
Dartford  
Kent  
DA1 1BE

01322 228090

[dartford@livermores.co.uk](mailto:dartford@livermores.co.uk)

[www.livermores.co.uk](http://www.livermores.co.uk)