

LIVERMORES

THE ESTATE AGENTS

2 Bedrooms

Bungalow - Semi Detached

Price Guide

£315,000

Located in

Dartford



www.livermores.co.uk



37 Fulwich Road

Dartford Kent DA1 1UN



GUIDE PRICE £315,000 TO £330,000 Ideally located for Dartford station and town centre is this 2 double bedroom semi detached bungalow. Offered to the market with NO CHAIN this property would make either an excellent first time buy or investment and has recently been redecorated and comprises spacious reception room, fitted kitchen & bathroom with 2 DOUBLE BEDROOMS. The property is also ideally located for both primary schools and is approximately one and a quarter miles from the DARTFORD GRAMMAR SCHOOLS. There is also potential to extend (STPP). VIEWING HIGHLY RECOMMENDED



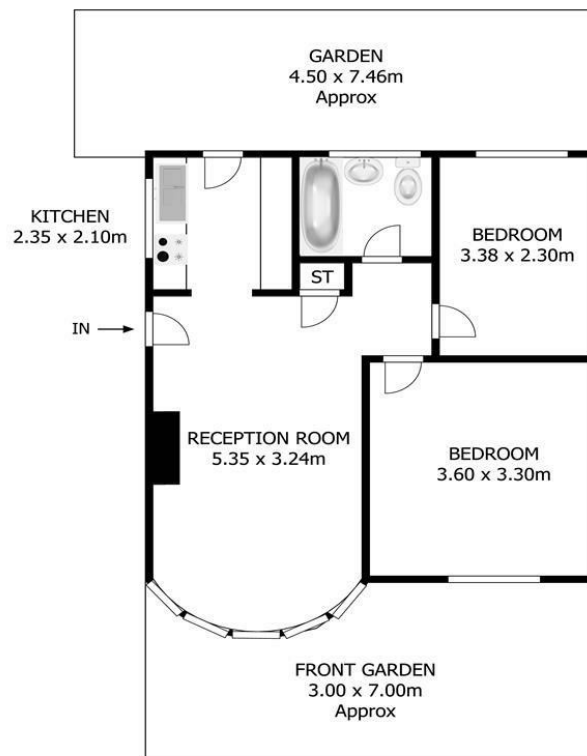
37 Fulwich Road

£315,000 Freehold



- GUIDE PRICE £315,000 TO £330,000
- 2 DOUBLE BEDROOMS
- NO CHAIN
- RECENTLY UPDATED
- SIMILAR PROPERTIES REQUIRED
- SEMI DETACHED BUNGALOW
- CLOSE TO DARTFORD STATION
- EXCELLENT INVESTMENT
- IDEAL FOR THE TOWN CENTRE
- EPC RATING D COUNCIL TAX BAND C





Ground Floor

Fulwich Rd, Dartford DA1 1UN

Council Tax Band

Local Authority

Agents Note: Whilst every care has been taken to prepare these particulars, they are for guidance purposes only. All measurements are approximate and are for general guidance purposes only and whilst every care has been taken to ensure their accuracy, they should not be relied upon and potential buyers/tenants are advised to recheck the measurements.

Energy Efficiency Rating		
	Current	Potential
Very energy efficient - lower running costs		
(92 plus) A		90
(81-91) B		
(69-80) C		
(55-68) D	64	
(39-54) E		
(21-38) F		
(1-20) G		
Not energy efficient - higher running costs		
England & Wales	EU Directive 2002/91/EC	

1 Hythe Street

Dartford

Kent

DA1 1BE

LIVERMORES
THE ESTATE AGENTS

dartford@livermores.co.uk

01322 228090

www.livermores.co.uk