



**LIVERMORES**  
THE ESTATE AGENTS

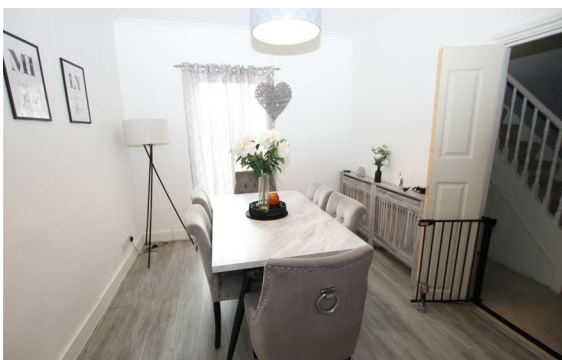
3 Bedrooms  
House - Terraced  
Located in Dartford  
**£400,000**



[dartford@livermores.co.uk](mailto:dartford@livermores.co.uk)

[www.livermores.co.uk](http://www.livermores.co.uk)

01322 228090



OFFERS IN THE REGION OF £400,000. Nestled on Dartford Road in the charming town of Dartford, this delightful three-bedroom terraced family home is a true gem. Boasting two reception rooms and a well-appointed bathroom, this property offers a comfortable and spacious living environment for you and your loved ones.

Situated in the sought-after Dartford Grammar School catchment area, this home is perfect for families looking to provide their children with a top-tier education. Additionally, its close proximity to Dartford town centre and train station makes commuting and running errands a breeze.

Step inside this well-presented property and be greeted by the warmth of double glazing and central heating, ensuring your comfort all year round. The fitted kitchen is a chef's dream, offering ample space to whip up delicious meals for family and friends.

## Energy Efficiency Rating: D

Agents Note: Whilst every care has been taken to prepare these particulars, they are for guidance purposes only. All measurements are approximate and are for general guidance purposes only and whilst every care has been taken to ensure their accuracy, they should not be relied upon and potential buyers/tenants are advised to recheck the measurements.

**LIVERMORES**  
THE ESTATE AGENTS

1 Hythe Street  
Dartford  
Kent  
DA1 1BE

01322 228090

[dartford@livermores.co.uk](mailto:dartford@livermores.co.uk)

[www.livermores.co.uk](http://www.livermores.co.uk)