



LIVERMORES
THE ESTATE AGENTS

3 Bedrooms
House - End Terrace
Located in Dartford

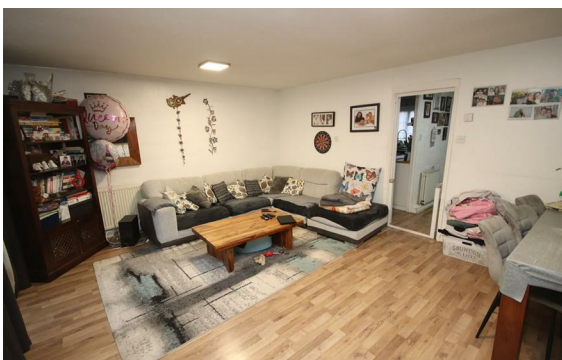
£375,000



dartford@livermores.co.uk

www.livermores.co.uk

01322 228090



1 Hythe Street
Dartford
Kent
DA1 1BE

01322 228090

dartford@livermores.co.uk

www.livermores.co.uk

Livermores are proud to present to the market this THREE BEDROOM, END OF TERRACE HOUSE to the market. The property is conveniently located for Bluewater shopping centre, Bean Primary school, Beacon Wood country park, A2, and links to M25.

The accommodation comprises entrance hall, cloakroom, spacious lounge-diner and kitchen. On the first floor there are two double bedrooms, a good sized single bedroom and family bathroom. To the rear there is a low maintenance garden. Benefiting from being in a cul-de-sac location and being surrounded by woodlands and beautiful walks.

Energy Efficiency Rating:

Agents Note: Whilst every care has been taken to prepare these particulars, they are for guidance purposes only. All measurements are approximate and are for general guidance purposes only and whilst every care has been taken to ensure their accuracy, they should not be relied upon and potential buyers/tenants are advised to recheck the measurements.